

LIG1 Recombinant Antibody



RACO0500

Product Information

Size:

50ul

Reactivity:

Human

Source:

Homo sapiens (Human)

Isotype:

Rabbit IgG

Applications:

ELISA, WB, IHC

Recommended dilutions:

WB:1:500-1:5000, IHC:1:50-1:200

Protein Background:

DNA ligase that seals nicks in double-stranded DNA during DNA replication, DNA recombination and DNA repair.

Gene ID:

LIG1

Uniprot

P18858

Synonyms:

DNA ligase 1 (EC 6.5.1.1) (DNA ligase I) (Polydeoxyribonucleotide synthase [ATP] 1), LIG1

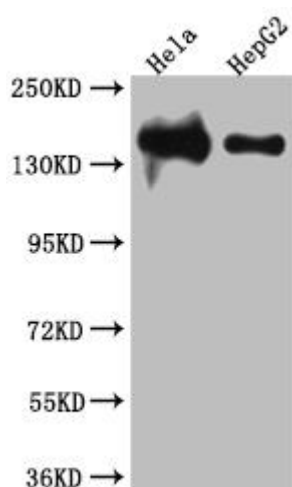
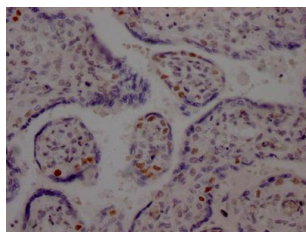
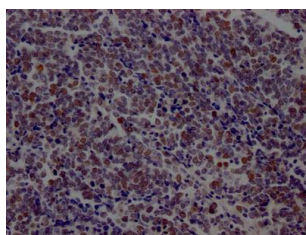
Immunogen:

A synthesized peptide derived from human DNA Ligase I.

Storage:

Rabbit IgG in phosphate buffered saline, pH 7.4, 150mM NaCl, 0.02% sodium azide and 50% glycerol.

Product Images



IHC image of RACO0500 diluted at 1:100 and staining in paraffin-embedded human lung cancer performed on a Leica Bond™ system. After dewaxing and hydration, antigen retrieval was mediated by high pressure in a citrate buffer (pH 6.0). Section was blocked with 10% normal goat serum 30min at RT. Then primary antibody (1% BSA) was incubated at 4°C overnight. The primary is detected by a Goat anti-rabbit IgG polymer labeled by HRP and visualized using 0.05% DAB.

IHC image of RACO0500 diluted at 1:100 and staining in paraffin-embedded human placenta tissue performed on a Leica Bond™ system. After dewaxing and hydration, antigen retrieval was mediated by high pressure in a citrate buffer (pH 6.0). Section was blocked with 10% normal goat serum 30min at RT. Then primary antibody (1% BSA) was incubated at 4°C overnight. The primary is detected by a Goat anti-rabbit IgG polymer labeled by HRP and visualized using 0.05% DAB.

Western Blot

Positive WB detected in(HeLa whole cell lysate) HepG2 whole cell lysate)

All lanes: DNA Ligase I antibody at 1:1000

Secondary

Goat polyclonal to rabbit IgG at 1:50000 dilution

Predicted band size: 102, 89, 99 kDa

Observed band size: 140 kDa