

# EIF4A1 Recombinant Antibody



RACO0501

---

## Product Information

**Size:**

50ul

**Reactivity:**

Human

**Source:**

Homo sapiens (Human)

**Isotype:**

Rabbit IgG

**Applications:**

ELISA, WB, IF

**Recommended dilutions:**

WB:1:500-1:5000, IF:1:20-1:200

**Protein Background:**

ATP-dependent RNA helicase which is a subunit of the eIF4F complex involved in cap recognition and is required for mRNA binding to ribosome. In the current model of translation initiation, eIF4A unwinds RNA secondary structures in the 5'-UTR of mRNAs which is necessary to allow efficient binding of the small ribosomal subunit, and subsequent scanning for the initiator codon.

**Gene ID:**

EIF4A1

**Uniprot**

P60842

**Synonyms:**

Eukaryotic initiation factor 4A-I (eIF-4A-I) (eIF4A-I) (EC 3.6.4.13) (ATP-dependent RNA helicase eIF4A-1), EIF4A1, DDX2A EIF4A

**Immunogen:**

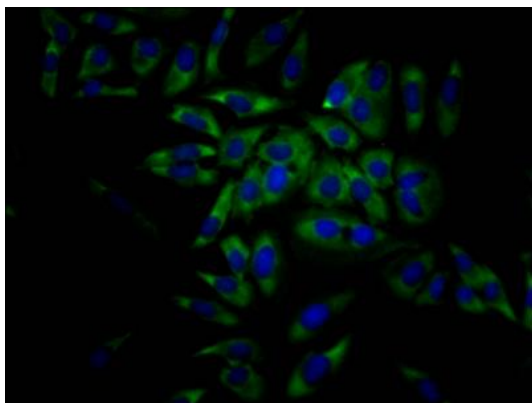
A synthesized peptide derived from human eIF4A1.

**Storage:**

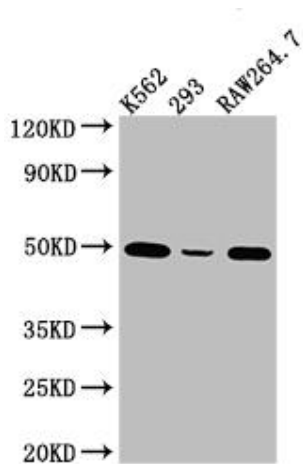
Rabbit IgG in phosphate buffered saline, pH 7.4, 150mM NaCl, 0.02% sodium azide and 50% glycerol.

## Product Images

---



Immunofluorescence staining of HeLa Cells with RACO0501 at 1:50, counter-stained with DAPI. The cells were fixed in 4% formaldehyde, permeated by 0.2% TritonX-100, and blocked in 10% normal Goat Serum. The cells were then incubated with the antibody overnight at 4°C. Nuclear DNA was labeled in blue with DAPI. The secondary antibody was FITC-conjugated AffiniPure Goat Anti-Rabbit IgG (H+L).



### Western Blot

Positive WB detected in( K562 whole cell lysate) 293 whole cell lysate) RAW264.7 whole cell lysate) All lanes: eIF4A1 Antibody at 1:1000

Secondary

Goat polyclonal to rabbit IgG at 1:50000 dilution

Predicted band size: 40, 47 kDa

Observed band size: 50 kDa