

RACO0518

Product Information

Size:

50ul

Reactivity:

Human

Source:

Homo sapiens (Human)

Isotype:

Rabbit IgG

Applications:

ELISA, WB, IF

Recommended dilutions:

WB:1:500-1:5000, IF:1:20-1:200

Protein Background:

The heterodimer acts as an E1 ligase for SUMO1, SUMO2, SUMO3, and probably SUMO4. It mediates ATP-dependent activation of SUMO proteins followed by formation of a thioester bond between a SUMO protein and a conserved active site cysteine residue on UBA2/SAE2.

Gene ID:

SAE1

Uniprot

Q9UBE0

Synonyms:

SUMO-activating enzyme subunit 1 (Ubiquitin-like 1-activating enzyme E1A) [Cleaved into: SUMO-activating enzyme subunit 1, N-terminally processed], SAE1, AOS1 SUA1 UBLE1A

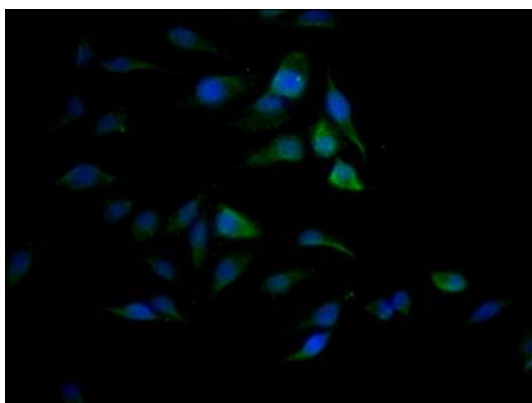
Immunogen:

A synthesized peptide derived from human SAE1.

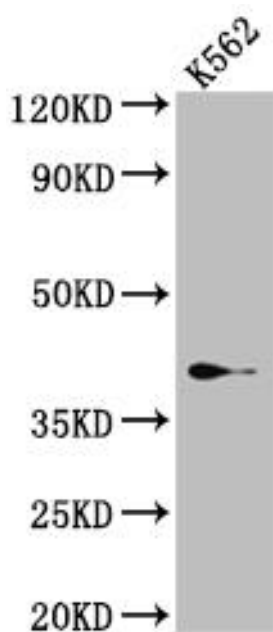
Storage:

Rabbit IgG in phosphate buffered saline, pH 7.4, 150mM NaCl, 0.02% sodium azide and 50% glycerol.

Product Images



Immunofluorescence staining of HeLa Cells with RACO0518 at 1:50, counter-stained with DAPI. The cells were fixed in 4% formaldehyde, permeated by 0.2% TritonX-100, and blocked in 10% normal Goat Serum. The cells were then incubated with the antibody overnight at 4°C. Nuclear DNA was labeled in blue with DAPI. The secondary antibody was FITC-conjugated AffiniPure Goat Anti-Rabbit IgG (H+L).



Western Blot

Positive WB detected in(K562 whole cell lysate) All lanes: SAE1
Antibody at 1:1000

Secondary

Goat polyclonal to rabbit IgG at 1:50000 dilution

Predicted band size: 39, 30, 34 kDa

Observed band size: 39 kDa