

CSNK2A1 Recombinant Antibody



RACO0540

Product Information

Size:

50ul

Reactivity:

Human, Mouse

Source:

Homo sapiens (Human)

Isotype:

Rabbit IgG

Applications:

ELISA, WB

Recommended dilutions:

WB:1:500-1:5000

Protein Background:

Catalytic subunit of a constitutively active serine/threonine-protein kinase complex that phosphorylates a large number of substrates containing acidic residues C-terminal to the phosphorylated serine or threonine. Regulates numerous cellular processes, such as cell cycle progression, apoptosis and transcription, as well as viral infection. May act as a regulatory node which integrates and coordinates numerous signals leading to an appropriate cellular response. During mitosis, functions as a component of the p53/TP53-dependent spindle assembly checkpoint (SAC) that maintains cyclin-B-CDK1 activity and G2 arrest in response to spindle damage.

Gene ID:

CSNK2A1

Uniprot

P68400

Synonyms:

Casein kinase II subunit alpha (CK II alpha) (EC 2.7.11.1), CSNK2A1, CK2A1

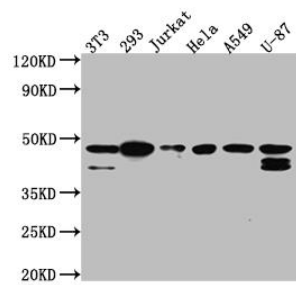
Immunogen:

A synthesized peptide derived from human CKII alpha.

Storage:

Rabbit IgG in phosphate buffered saline, pH 7.4, 150mM NaCl, 0.02% sodium azide and 50% glycerol.

Product Images



Western Blot

Positive WB detected in(NIH/3T3 whole cell lysate) 293 whole cell lysate) Jurkat whole cell lysate) HeLa whole cell lysate) A549 whole cell lysate) U-87 whole cell lysate) All lanes: CKII alpha antibody at 1:1000

Secondary

Goat polyclonal to rabbit IgG at 1:50000 dilution

Predicted band size: 46, 30 kDa

Observed band size: 45 kDa