

RACO0553

---

## Product Information

**Size:**

50ul

**Reactivity:**

Human

**Source:**

Homo sapiens (Human)

**Isotype:**

Rabbit IgG

**Applications:**

ELISA, IHC

**Recommended dilutions:**

IHC:1:50-1:200

**Protein Background:**

Regulates a signal transduction pathway linking plasma membrane receptors to the assembly of focal adhesions and actin stress fibers. Involved in a microtubule-dependent signal that is required for the myosin contractile ring formation during cell cycle cytokinesis. Plays an essential role in cleavage furrow formation. Required for the apical junction formation of keratinocyte cell-cell adhesion. Stimulates PKN2 kinase activity. May be an activator of PLCE1. Activated by ARHGEF2, which promotes the exchange of GDP for GTP. Essential for the SPATA13-mediated regulation of cell migration and adhesion assembly and disassembly. The MEMO1-RHOA-DIAPH1 signaling pathway plays an important role in ERBB2-dependent stabilization of microtubules at the cell cortex.

**Gene ID:**

RHOA

**Uniprot**

P61586

**Synonyms:**

Transforming protein RhoA (Rho cDNA clone 12) (h12), RHOA, ARH12 ARHA RHO12

**Immunogen:**

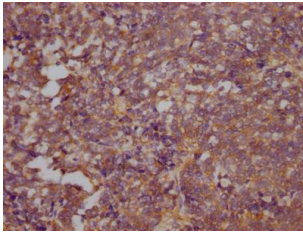
A synthesized peptide derived from human Rho A.

**Storage:**

Rabbit IgG in phosphate buffered saline, pH 7.4, 150mM NaCl, 0.02% sodium azide and 50% glycerol.

## Product Images

---



IHC image of RACO0553 diluted at 1:100 and staining in paraffin-embedded human lung cancer performed on a Leica Bond™ system. After dewaxing and hydration, antigen retrieval was mediated by high pressure in a citrate buffer (pH 6.0). Section was blocked with 10% normal goat serum 30min at RT. Then primary antibody (1% BSA) was incubated at 4°C overnight. The primary is detected by a Goat anti-rabbit IgG polymer labeled by HRP and visualized using 0.05% DAB.