

RACO0556

Product Information

Size:

50ul

Reactivity:

Human

Source:

Homo sapiens (Human)

Isotype:

Rabbit IgG

Applications:

ELISA, IHC

Recommended dilutions:

IHC:1:50-1:200

Protein Background:

Plays a major role in cholesterol homeostasis. Is critical for the uptake of cholesterol across the plasma membrane of the intestinal enterocyte. Is the direct molecular target of ezetimibe, a drug that inhibits cholesterol absorption. Lack of activity leads to multiple lipid transport defects. The protein may have a function in the transport of multiple lipids and their homeostasis, and may play a critical role in regulating lipid metabolism. Acts as a negative regulator of NPC2 and down-regulates its expression and secretion by inhibiting its maturation and accelerating its degradation.

Gene ID:

NPC1L1

Uniprot

Q9UHC9

Synonyms:

NPC1-like intracellular cholesterol transporter 1 (Niemann-Pick C1-like protein 1), NPC1L1

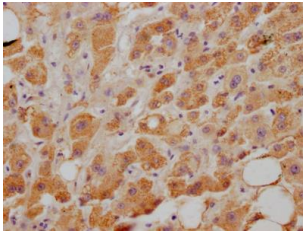
Immunogen:

A synthesized peptide derived from human NPC1L1.

Storage:

Rabbit IgG in phosphate buffered saline, pH 7.4, 150mM NaCl, 0.02% sodium azide and 50% glycerol.

Product Images



IHC image of RACO0556 diluted at 1:100 and staining in paraffin-embedded human liver tissue performed on a Leica Bond™ system. After dewaxing and hydration, antigen retrieval was mediated by high pressure in a citrate buffer (pH 6.0). Section was blocked with 10% normal goat serum 30min at RT. Then primary antibody (1% BSA) was incubated at 4°C overnight. The primary is detected by a Goat anti-rabbit IgG polymer labeled by HRP and visualized using 0.05% DAB.