

STX4 Recombinant Antibody



RACO0559

Product Information

Size:

50ul

Reactivity:

Human

Source:

Homo sapiens (Human)

Isotype:

Rabbit IgG

Applications:

ELISA, WB

Recommended dilutions:

WB:1:500-1:5000

Protein Background:

Plasma membrane t-SNARE that mediates docking of transport vesicles. Necessary for the translocation of SLC2A4 from intracellular vesicles to the plasma membrane. Together with STXB3 and VAMP2, may also play a role in docking/fusion of intracellular GLUT4-containing vesicles with the cell surface in adipocytes (By similarity). May also play a role in docking of synaptic vesicles at presynaptic active zones.

Gene ID:

STX4

Uniprot

Q12846

Synonyms:

Syntaxin-4 (Renal carcinoma antigen NY-REN-31), STX4, STX4A

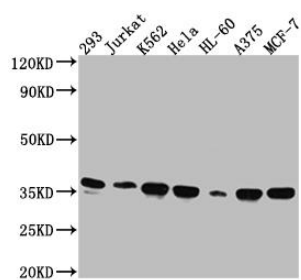
Immunogen:

A synthesized peptide derived from human Syntaxin 4.

Storage:

Rabbit IgG in phosphate buffered saline, pH 7.4, 150mM NaCl, 0.02% sodium azide and 50% glycerol.

Product Images



Western Blot

Positive WB detected in(293 whole cell lysate) Jurkat whole cell lysate) K562 whole cell lysate) Hela whole cell lysate) HL-60 whole cell lysate) A375 whole cell lysate) MCF-7 whole cell lysate) All lanes: Syntaxin 4 antibody at 1:1000

Secondary

Goat polyclonal to rabbit IgG at 1:50000 dilution

Predicted band size: 35, 34 kDa

Observed band size: 35 kDa