

RACO0566

---

## Product Information

**Size:**

50ul

**Reactivity:**

Human, Mouse

**Source:**

Homo sapiens (Human)

**Isotype:**

Rabbit IgG

**Applications:**

ELISA, WB

**Recommended dilutions:**

WB:1:500-1:5000

**Protein Background:**

Regulatory component of the cyclin D1-CDK4 (DC) complex that phosphorylates and inhibits members of the retinoblastoma (RB) protein family including RB1 and regulates the cell-cycle during G(1)/S transition. Phosphorylation of RB1 allows dissociation of the transcription factor E2F from the RB/E2F complex and the subsequent transcription of E2F target genes which are responsible for the progression through the G(1) phase. Hypophosphorylates RB1 in early G(1) phase. Cyclin D-CDK4 complexes are major integrators of various mitogenic and antimitogenic signals. Also substrate for SMAD3, phosphorylating SMAD3 in a cell-cycle-dependent manner and repressing its transcriptional activity. Component of the ternary complex, cyclin D1/CDK4/CDKN1B, required for nuclear translocation and activity of the cyclin D-CDK4 complex. Exhibits transcriptional corepressor activity with INSM1 on the NEUROD1 and INS promoters in a cell cycle-independent manner.

**Gene ID:**

CCND1

**Uniprot**

P24385

**Synonyms:**

G1/S-specific cyclin-D1 (B-cell lymphoma 1 protein) (BCL-1) (BCL-1 oncogene) (PRAD1 oncogene), CCND1, BCL1 PRAD1

**Immunogen:**

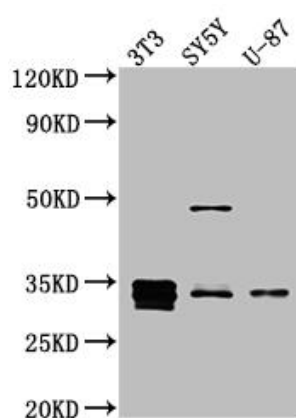
A synthesized peptide derived from human Cyclin D1.

**Storage:**

Rabbit IgG in phosphate buffered saline, pH 7.4, 150mM NaCl, 0.02% sodium azide and 50% glycerol.

## Product Images

---



### Western Blot

Positive WB detected in( NIH/3T3 whole cell lysate) SH-SY5Y whole cell lysate) U-87 whole cell lysate) All lanes: Cyclin D1 antibody at 1:1000 Secondary

Goat polyclonal to rabbit IgG at 1:50000 dilution

Predicted band size: 34 kDa

Observed band size: 34 kDa