

TINF2 Recombinant Antibody



RACO0569

Product Information

Size:

50ul

Reactivity:

Human, Mouse, Rat

Source:

Homo sapiens (Human)

Isotype:

Rabbit IgG

Applications:

ELISA, WB

Recommended dilutions:

WB:1:500-1:5000

Protein Background:

Component of the shelterin complex (telosome) that is involved in the regulation of telomere length and protection. Shelterin associates with arrays of double-stranded TTAGGG repeats added by telomerase and protects chromosome ends; without its protective activity, telomeres are no longer hidden from the DNA damage surveillance and chromosome ends are inappropriately processed by DNA repair pathways. Plays a role in shelterin complex assembly. Isoform 1 may have additional role in tethering telomeres to the nuclear matrix.

Gene ID:

TINF2

Uniprot

Q9BSI4

Synonyms:

TERF1-interacting nuclear factor 2 (TRF1-interacting nuclear protein 2), TINF2, TIN2

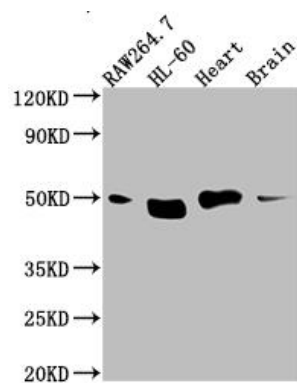
Immunogen:

A synthesized peptide derived from human Tin2.

Storage:

Rabbit IgG in phosphate buffered saline, pH 7.4, 150mM NaCl, 0.02% sodium azide and 50% glycerol.

Product Images



Western Blot

Positive WB detected in(RAW264.7 whole cell lysate) HL-60 whole cell lysate) Mouse Herat whole cell lysate) Mouse Brain whole cell lysate)

All lanes: Tin2 antibody at 1:1000

Secondary

Goat polyclonal to rabbit IgG at 1:50000 dilution

Predicted band size: 51, 40, 16 kDa

Observed band size: 51 kDa