

# TOMM22 Recombinant Antibody



RACO0581

---

## Product Information

**Size:**

50ul

**Reactivity:**

Human

**Source:**

Homo sapiens (Human)

**Isotype:**

Rabbit IgG

**Applications:**

ELISA, WB, IHC

**Recommended dilutions:**

WB:1:500-1:5000, IHC:1:50-1:200

**Protein Background:**

Central receptor component of the translocase of the outer membrane of mitochondria (TOM complex) responsible for the recognition and translocation of cytosolically synthesized mitochondrial preproteins. Together with the peripheral receptor TOM20 functions as the transit peptide receptor and facilitates the movement of preproteins into the translocation pore.

**Gene ID:**

TOMM22

**Uniprot**

Q9NS69

**Synonyms:**

Mitochondrial import receptor subunit TOM22 homolog (hTom22) (1C9-2) (Translocase of outer membrane 22 kDa subunit homolog), TOMM22, TOM22

**Immunogen:**

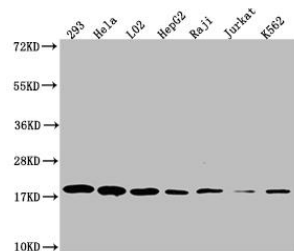
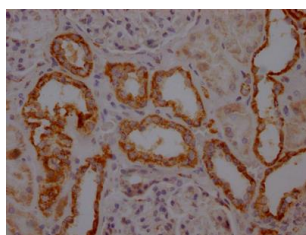
A synthesized peptide derived from human TOMM22.

**Storage:**

Rabbit IgG in phosphate buffered saline, pH 7.4, 150mM NaCl, 0.02% sodium azide and 50% glycerol.

## Product Images

---



IHC image of RACO0581 diluted at 1:100 and staining in paraffin-embedded human kidney tissue performed on a Leica Bond™ system. After dewaxing and hydration, antigen retrieval was mediated by high pressure in a citrate buffer (pH 6.0). Section was blocked with 10% normal goat serum 30min at RT. Then primary antibody (1% BSA) was incubated at 4°C overnight. The primary is detected by a Goat anti-rabbit IgG polymer labeled by HRP and visualized using 0.05% DAB.

### Western Blot

Positive WB detected in( 293 whole cell lysate) Hela whole cell lysate) L02 whole cell lysate) HepF2 whole cell lysate) Raji whole cell lysate) Jurkat whole cell lysate) K562 whole cell lysate) All lanes: TOMM22 antibody at 1:1000

### Secondary

Goat polyclonal to rabbit IgG at 1:50000 dilution

Predicted band size: 16 kDa

Observed band size: 18 kDa