



Technical Manual

Human HSP Array (9 targets)

- **Catalogue Code: SARB0046**
- **Sandwich Principle**
- **Research Use Only**

Contents

1. Key Features and Sample Types.....	3
2. Introduction	4
3. Workflow.....	5
4. Kit Contents and Storage	6
5. Additional Materials Required.....	6
6. Sample Suggestions and General Tips.....	7
7. Chemiluminescence Detection Guidelines	9
8. Component Preparation.....	9
9. Array Protocol.....	10
10. Typical Data.....	13
11. Interpretation of Results.....	13
12. Array Map.....	16
13. Troubleshooting Guide	17

1. Key features and Sample Types

Size:

2, 4 or 8

Number of Targets Detected:

9

Gene Symbols:

DNAJB5, GH1, HMOX1, HSP90AA1, HSPA14, HSPA4, HSPB1, HSPE1, RPS27A

Detection principle:

Sandwich (Semi-Quantitative)

Sample Types:

Cell Culture Supernatants / Cell Lysates / Plasma / Serum / Tissue Lysates

Species Detected:

Human

Method of Detection:

Chemiluminescence

Pathway:

Solid Support:

Membrane

Expiry:

See Kit Label

2. Introduction

Heat shock proteins (HSP) are a family of functionally related molecular chaperones, which play critical roles in protein folding, intracellular trafficking of proteins, and coping with proteins denatured by heat shock and other stresses. HSPs are found in virtually all living organisms, from bacteria to humans.

HSP family includes 5 major classes according to their molecular weights, i.e., the small heat-shock proteins (sHSPs), HSP33, HSP60, HSP70 and HSP90/ HSP100. The smaller 8-kD protein ubiquitin, which marks proteins for degradation and is regarded as co-chaperone, also belongs to HSP family.

In addition to their roles in protein trafficking and stress response, HSPs are also important in cardiovascular functions and modulation of immune responses. Some HSPs have been under investigation as therapeutic targets in cancer

How this kit work:

The Assay Genie Heat shock proteins (HSP) are a family of functionally related molecular chaperones, which play critical roles in protein folding, intracellular trafficking of proteins, and coping with proteins denatured by heat shock and other stresses. HSPs are found in virtually all living organisms, from bacteria to humans. HSP family includes 5 major classes according to their molecular weights, i.e., the small heat-shock proteins (sHSPs), HSP33, HSP60, HSP70 and HSP90/ HSP100. The smaller 8-kD protein ubiquitin, which marks proteins for degradation and is regarded as co-chaperone, also belongs to HSP family. In addition to their roles in protein trafficking and stress response, HSPs are also important in cardiovascular functions and modulation of immune responses. Some HSPs have been under investigation as therapeutic targets in cancer

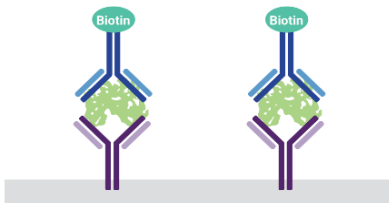
3. Workflow



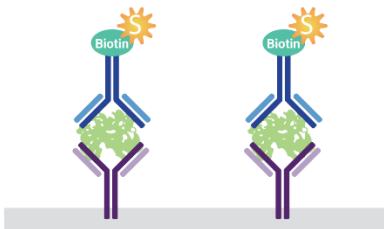
← Step 1: Capture antibodies on a nitrocellulose membrane



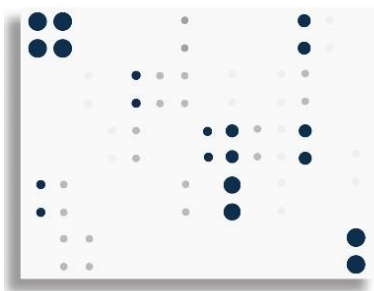
← Step 2: Addition of target sample.



← Step 3: incubation with biotin-labeled detection antibodies.



← Step 4: detection of target analyte with labeled-streptavidin.



← Step 5: Data analysis and imaging

4. Kit Components and Storage

Store kit at < -20°C immediately upon arrival. Kit must be used within the 6- month expiration date.

Components	2 Arrays	4 Arrays	8 Arrays	Storage**
Antibody Arrays	2 membranes	4 membranes	8 membranes	-20°C
Blocking Buffer	1 vial (25ml)		2 vials (25ml/ea)	
Biotinylated Antibody Cocktail	1 vial	2 vials	4 vials	2-8°C (for up to 3 days after dilution)
1000x HRP-Streptavidin Concentrate	1 vial (50µl)			2-8°C
20X Wash Buffer I Concentrate	1 vial (10ml)		1 vial (20ml)	
20X Wash Buffer II Concentrate	1 vial (10ml)		1 vial (20ml)	
2X Cell Lysis Buffer Concentrate	1 vial (5ml)			
Detection Buffer C	1 vial (1.5ml)		1 vial (2.5ml)	
Detection Buffer D	1 vial (1.5ml)		1 vial (2.5ml)	
Protease Inhibitor Cocktail	1 vial		2 vials	
8-Well Incubation Tray and Lid	1 tray			RT

*Each package contains 2 or 4 membranes

**Storage AFTER THAWING: up to 3 months (unless stated otherwise) or until expiration date

5. Additional Materials Required

- Pipettors, pipet tips and other common lab consumables
- Orbital shaker or oscillating rocker
- Tissue paper, blotting paper or chromatography paper
- Adhesive tape or plastic wrap
- Distilled or de-ionized water
- A chemiluminescent blot documentation system:
 - CCD Camera
 - X-Ray Film and a suitable film processor
 - Gel documentation system
 - Or other chemiluminescent detection system capable of imaging a western blot

6. Sample Suggestions and General Tips

1. Sample Collection, Preparation and Storage

NOTE: Optimal methods will need to be determined by each researcher empirically based on researched literature and knowledge of the samples.

- If not using fresh samples, freeze samples as soon as possible after collection.
- Avoid multiple freeze-thaw cycles. If possible, sub-aliquot samples prior to initial storage.
- It is strongly recommended to add a protease inhibitor cocktail to cell and tissue lysate samples..
- Avoid sonication of 1 ml or less as this can quickly heat and denature proteins.
- Most samples will not need to be concentrated. If concentration is required, a spin column concentrator with a chilled centrifuge is recommended.
- Always centrifuge the samples hard after thawing (~10,000 RPM for 2-5 minutes) in order to remove any particulates that could interfere with detection.
- **General tips for preparing serum, plasma, cell culture media, urine, and lysate samples can be viewed on the online at <https://www.assaygenie.com/elisa-sample-preparation-and-collection>**

2. Sample Type and Recommended Dilutions/Amounts

NOTE: Optimal sample dilutions and amounts will need to be determined by each researcher empirically, but the below recommendations may be used as a starting point. Blocking Buffer should be used to dilute samples. Equal amount of protein should be used per sample.

- **Cell and Tissue Lysates:** Load 50 to 500 µg of total protein (after a 5-fold to 10- fold dilution to minimize the effects of any detergent(s)). Therefore the original lysate concentration should be 1 to 5 mg/ml.

3. Handling Membranes

- The antibody printed side of each membrane is marked by a dash (-) or number (#) in the upper left corner.
- Do not allow membranes to dry out during the experiment or they may become fragile and break OR high and/or uneven background may occur.
- Grasp membranes by the corners or edges only using forceps. DO NOT touch printed antibody spots.

4. Incubation and Washing

- Perform *ALL* incubation and wash steps under gentle rotation or rocking motion (~0.5 to 1 cycle/sec) using an orbital shaker or oscillating rocker to ensure complete and even reagent/sample coverage. Rocking/rotating too vigorously may cause foaming or bubbles to appear on the membrane surface which should be avoided.
- All washes and incubations should be performed in the Incubation Tray provided in the kit.
- Cover the Incubation Tray with the lid provided during all incubation steps to avoid evaporation and outside debris contamination.
- Ensure the membranes are completely covered with sufficient sample or reagent volume during each incubation.
- Avoid forceful pipetting directly onto the membrane; instead, gently pipette samples and reagents into a corner of each well.
- Aspirate samples and reagents completely after each step by suctioning off excess liquid with a pipette. Tilting the tray so the liquid moves to a corner and then pipetting is an effective method.
- Optional overnight incubations may be performed for the following step to increase overall spot signal intensities:
 - Sample Incubation
 - Biotinylated Antibody Cocktail Incubation
 - HRP-Streptavidin Incubation

NOTE: Overnight incubations should be performed at 4°C (also with gentle rocking/shaking). Be aware that longer incubations can also increase the background response so complete liquid removal and washing is critical.

7. Chemiluminescence Detection Guidelines

1. Beginning with adding the detection buffers and ending with exposing the membranes should take no more than 10-15 minutes as the chemiluminescent signals may start to fade at this point.
2. Trying multiple exposure times is recommended to obtain optimum results.
3. A few seconds to a few minutes is the recommended exposure time range, with 30 seconds to 1 minute being suitable for most samples.

8. Component Preparation

NOTE: Thaw all reagents to room temperature immediately before use. If wash buffers contain visible crystals, warm to room temperature and mix gently until dissolved.

NOTE: The Biotinylated Antibody Cocktail and the HRP-Streptavidin Concentrate vials should be briefly centrifuged (~1000 g) before opening to ensure maximum recovery and mixed well as precipitates may form during storage.

Biotinylated Antibody Cocktail*

Pipette 2 ml of Blocking Buffer into each vial. Mix gently with a pipette.

*1 vial is enough to test 2 membranes

1000X HRP-Streptavidin Concentrate

Dilute 1,000-fold with Blocking Buffer. Mix gently with a pipette.

Example: 10 μ l of 1,000X concentrate + 9990 μ l of Blocking Buffer = 10 ml of 1X working solution

Wash Buffer Concentrate (I + II)

Dilute each 20-fold with distilled or deionized water.

Example: 10 ml of 20X concentrate + 190 ml of water = 200 ml of 1X working solution

2X Cell Lysis Buffer Concentrate

Dilute 2-fold with distilled or deionized water.

Example: 10 ml of 2X concentrate + 10 ml of water = 20 ml of 1X working solution

Protease Inhibitor Cocktail

Pipette 60 μ l of 1X Cell Lysis Buffer into the vial.

The antibody arrays, blocking buffer, detection buffer C and D require no preparation.

9. Array Protocol

NOTE: Prepare all reagents and samples immediately prior to use. See Sections 6 + 7 'Sample Tips and General Considerations' and 'Component Preparation'. ALL incubations and washes must be performed under gentle rotation/rocking (~0.5-1 cycle/sec). Make sure no bubbles appear on or between the membranes to ensure even incubations.

1. Remove the kit from storage and allow the components to equilibrate to room temperature.
2. Carefully remove the Antibody Arrays from the plastic packaging and place each membrane (printed side up) into a well of the Incubation Tray. One membrane per well.

NOTE: The antibody printed side is marked by a dash (-) or number (#) in the upper left corner

A. Blocking

3. Pipette 2 ml of Blocking Buffer into each well and incubate for 30 minutes at room temperature.
4. Aspirate blocking buffer from each well with a pipette.

B. Sample Incubation

5. Pipette 1 ml of diluted or undiluted sample into each well and incubate for 1.5 to 5 hours at room temperature OR overnight at 4°C.

NOTE: Longer incubations can help maximize the spot signal intensities. However, doing so can also increase the background response so complete liquid removal and washing is critical.

6. Aspirate samples from each well with a pipette.

C. First Wash

NOTE: The 20x Wash Buffer Concentrates I and II must be diluted 20-fold before use. See component preparations for details.

7. Wash Buffer I Wash: Pipette 2 ml of 1X Wash Buffer I into each well and incubate for 5 minutes at room temperature. Repeat this 2 more times for a total of 3 washes using fresh buffer and aspirating out the buffer completely each time.
8. Wash Buffer II Wash: Pipette 2 ml of 1X Wash Buffer II into each well and incubate for 5 minutes at room temperature. Repeat this 1 more time for a total of 2 washes using fresh buffer and aspirating out the buffer completely each time.

D. Biotinylated Antibody Cocktail Incubation

NOTE: The Biotinylated Antibody Cocktail must be prepared before use. See Component Preparation for details

9. Pipette 1 ml of the prepared Biotinylated Antibody Cocktail into each well and incubate for 1.5 to 2 hours at room temperature OR overnight at 4°C.
10. Aspirate Biotinylated Antibody Cocktail from each well.

E. Second Wash

11. Wash membranes as directed in Steps 7 and 8.

F. HRP-Streptavidin Incubation

NOTE: The 1000X HRP-Streptavidin Concentrate must be diluted before use. See Component Preparation for detail.

12. Pipette 2 ml of 1X HRP-Streptavidin into each well and incubate for 2 hours at room temperature OR overnight at 4°C.
13. Aspirate HRP-Streptavidin from each well.

G. Third Wash

14. Wash membranes as directed in Steps 7 and 8.

H. Chemiluminescence Detection

NOTE: Do not allow membranes to dry out during detection.

15. Transfer the membranes, printed side up, onto a sheet of chromatography paper, tissue paper, or blotting paper lying on a flat surface (such as a benchtop).
16. Remove any excess wash buffer by blotting the membrane edges with another piece of paper.
17. Transfer and place the membranes, printed side up, onto a plastic sheet (provided) lying on a flat surface.

NOTE: Multiple membranes can be placed next to each other and fit onto a single plastic sheet. Use additional plastics sheets if necessary.

18. Into a single clean tube, pipette equal volumes (1:1) of Detection Buffer C and Detection Buffer D. Mix well with a pipette.

EXAMPLE: 250 µl of Detection Buffer C + 250 µl of Detection Buffer D = 500 µl (sufficient for 1 membrane)

19. Gently pipette 500 µl of the Detection Buffer mixture onto each membrane and incubate for 2 minutes at room temperature (DO NOT ROCK OR SHAKE). Immediately afterwards, proceed to Step 20.

NOTE: Exposure should ideally start within 5 minutes after finishing Step 19 and completed within 10-15 minutes as chemiluminescence signals will fade over time. If necessary, the signals can usually be restored by repeating washing, HRP-Streptavidin and Detection Buffers incubations (Steps 11-19).

20. Place another plastic sheet on top of the membranes by starting at one end and gently "rolling" the flexible plastic sheet across the surface to the opposite end to smooth out any air bubbles. The membranes should now be "sandwiched" between two plastic sheets.

NOTE: Avoid "sliding" the top plastic sheet along the membranes' printed surface.

21. Transfer the sandwiched membranes to the chemiluminescence imaging system such as a CCD camera (recommended) and expose.

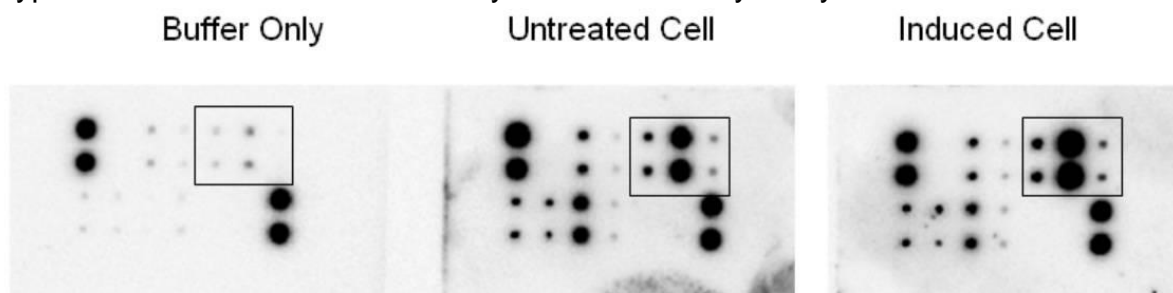
NOTE: Optimal exposure times will vary so performing multiple exposure times is strongly recommended. See Component Preparation for additional details.

I. Storage

22. To store, without direct pressure, gently sandwich the membranes between 2 plastic sheets (if not already), tape the sheets together or use plastic wrap to secure them, and store at < -20°C for future reference.

10. Typical Data

Typical Results obtained with Assay Genies Antibody Arrays.



Heat shock protein profiling in induced HepG2 cultured cells HepG2 cells were treated with 100 μ M hydrogen peroxide for 24 hours. 500 μ g of cell lysates from both untreated and induced HepG2 cells were incubated overnight with the Assay Genie Human Heat Shock Protein Antibody Array membranes. Control membrane was incubated with blocking buffer.

Note the strong signals of the Positive Control Spots in the upper left and lower right corners. (See below for further details on the control spots.)

The signal intensity for each antigen-specific antibody spot is proportional to the relative concentration of the antigen in that sample. Comparison of signal intensities for individual antigen-specific antibody spots between and among array images can be used to determine relative differences in expression levels of each analyte sample-to-sample or group-to-group.

11. Interpretation of Results

Control Spots

Positive Control Spots (POS): Controlled amount of biotinylated antibody printed onto the array. Used for normalization and to orientate the arrays.

Negative Control Spots (NEG): Buffer printed (no antibodies) used to measure the baseline responses. Used for determining the level of non-specific binding of the samples.

Blank Spots (BLANK): Nothing is printed here. Used to measure the background response.

Data Extraction

Visual comparison of array images may be sufficient to see differences in relative protein expression. However, most researchers will want to perform numerical comparisons of the signal intensities (or more precisely, signal densities), using 2-D densitometry. Gel/Blot documentation systems and other chemiluminescent or

phosphorescent detection systems are usually sold as a package with compatible densitometry software.

Any densitometry software should be sufficient to obtain spot signal densities from your scanned images. One such software program, ImageJ, is available for free from the NIH website along with an array plug-in.

Guidelines for extracting densitometry data from array images:

- For each array membrane, identify a single exposure that exhibits a high signal to noise ratio (strong spot signals and low background response). Strong Positive Control Spot signals but not too strong that they are "bleeding" into one another is ideal. *The exposure time does not need to be identical for each array*, but Positive Control signals on each array image should have similar intensities.
- Measure the density of each spot using a circle that is roughly the size of one of the largest spots. Be sure to use the *same extraction circle dimensions* (area, size, and shape) for measuring the signal densities on every array for which you wish to compare the results.
- For each spot, use the *summed signal density* across the entire circle (i.e. total signal density per unit area).

Data Analysis

Once the raw numerical densitometry data is extracted, the background must be subtracted and the data normalized to the Positive Control signals to analyse.

Background Subtraction: Select values which you believe best represent the background. If the background is fairly even throughout the membrane, the Negative Control Spots (NEG) and/or Blank Spots (BLANK) should be similar and are accurate for this purpose.

Positive Control Normalization: The amount of biotinylated antibody printed for each Positive Control Spot is consistent from array to array. As such, the intensity of these Positive Control signals can be used to normalize signal responses for comparison of results across multiple arrays, much like housekeeping genes and proteins are used to normalize results of PCR gels and Western Blots, respectively.

To normalize array data, one array is defined as "Reference Array" to which the other arrays are normalized to. The choice of the Reference Array is arbitrary.

*The Assay Genie Analysis Software Tool designates Array 1/Sample 1 as the Reference Array (link available upon request).

Use the algorithm below to calculate and determine the signal fold expression between like analytes.

$$X(Ny) = X(y) * P1/P(y)$$

Where:

P1=mean signal density of Positive Control spots on reference array

P(y)=mean signal density of Positive Control spots on Array "y"

X(y)= X(Ny)=normalized signal intensity for spot "X" on Array "y"

For example:

Let's determine the relative expression of IL-6 on two different arrays (Arrays 1 and 2). Let's assume that the duplicate signals for the IL-6 spots on each array are identical (or that the signal intensity used in the following calculation is the mean of the two duplicate spots). Also assume the following:

P1 = 2500

P2 = 2700

IL-6 (1) = 300

IL-6 (2) = 455

Then $IL-6(N2) = 455 * 2500 / 2700 = 421.30$

The fold increase of IL-6(N2) vs IL-6(1) = $421.3 / 300 = 1.40$ -fold increase or a 40% increase in the signal intensity of IL-6 in Array 2 vs. Array 1.



Not sure where to begin?

Assay Genie offers Microsoft® Excel-based Analysis Software Tools for each array kit for automatic analysis and image and membrane analysis

Email: info@ASSAYGenie.com

Telephone: 00353 1 887 9802

12. Array Map

Each antibody is spotted in duplicate vertically

	A	B	C	D	E	F	G
1							
2	POS	POS	HSP27	HSP32	HSP40	HSP60	HSP70
3							
4	HSP90	GRP75	Ubiquitin+1	HSP10	NEG	NEG	POS

POS = positive
NEG = negative

13. Troubleshooting

Problem	Causes	Solutions
No Signals (not even positive control spots)	<ul style="list-style-type: none"> • Chemiluminescent imager is not working properly • Too Short Exposure • Degradation of components due to improper storage • Improper preparation or dilution of the HRP-Streptavidin • Waiting too long before exposing 	<ul style="list-style-type: none"> • Contact imager manufacturer • Expose the membranes longer • Store entire kit at < -20°C. Do not use kit after expiration date. See storage guidelines. • Centrifuge vial briefly before use, mix well, and do not dilute more than 1000-fold • The entire detection process should be completed in 10-15 minutes
Signals from Positive Control Spots visible, but no other spots visible	<ul style="list-style-type: none"> • Low sample protein levels • Skipped Sample Incubation Step • Incubations Too Short 	<ul style="list-style-type: none"> • Decrease sample dilution, concentrate samples, or load more protein initially • Samples must be loaded after the blocking step • Ensure the incubations are performed for the appropriate time or try the optional overnight incubation(s)
Uneven Signals and/or Background	<ul style="list-style-type: none"> • Bubbles present on or below membrane • Insufficient sample or reagent volume • Insufficient mixing of reagents • Rocking/Rotating on an uneven surface while incubating 	<ul style="list-style-type: none"> • Don't rock/rotate the tray too vigorously or pipette the sample or reagent with excessive force • Load enough sample and reagent to completely cover the membrane • Gently mix all reagents before loading onto the membrane, especially the HRP-Streptavidin and Biotin Antibody Cocktail • Rock/rotate on a flat surface or the sample or reagent can "pool" to one side
High Background Signals or all Spots Visible	<ul style="list-style-type: none"> • Too much HRP-Streptavidin or Biotinylated Antibody Cocktail • Prepare these signal enhancing components precisely as instructed • Too High of Sample Protein Concentration • Exposed Too Long • Insufficient Washing • Non-specific binding 	<ul style="list-style-type: none"> • Prepare these signal enhancing components precisely as instructed • Do not let the membranes dry out during the experiment. Cover the incubation tray with the lid to minimize evaporation • Increase dilution of the sample or load less protein • Decrease exposure time • Ensure all the wash steps are carried out and the wash buffer is removed completely after each wash step • Ensure the blocking buffer is stored and used properly

Notes

Notes

Assay Genie 100% money-back guarantee!

If you are not satisfied with the quality of our products and our technical team cannot resolve your problem, we will give you 100% of your money back.

Contact Details



Email: info@ASSAYGenie.com

Web: www.ASSAYGenie.com