

FAD Colorimetric/Fluorometric Assay Kit

(Catalog #BN00620; 100 assays; Store kit at -20°C)

I. Introduction:

Flavin Adenine Dinucleotide (FAD) is a redox cofactor which plays an important role in metabolism. FAD exists in different redox states and cycles between FAD, FADH and FADH₂. The primary sources of reduced FAD in eukaryotic metabolism are the citric acid cycle and the beta oxidation reaction pathways. In Assay Genie's FAD Assay Kit, FAD functions as the cofactor of an oxidase which catalyzes the formation of a product generating color and fluorescence. FAD can be detected by either colorimetric (OD = 570 nm) or fluorometric (Ex/Em = 535/587 nm) methods. The kit provides a rapid, simple, ultra-sensitive, and reliable test suitable for high throughput assay of FAD. The lower limit of detection is less than 1 nM FAD.

II. Kit Contents:

Components	100 assays	Cap Code	Part Number
FAD Assay Buffer	25 ml	WM	BN00620-1
GenieRed Probe (in DMSO)	0.2 ml	Red	BN00620-2A
FAD Enzyme Mix (lyophilized)	1 vial	Green	BN00620-4
FAD Standard (1 nmol, lyophilized)	1 vial	Yellow	BN00620-5
Stop Solution	1.2 ml	Blue	BN00620-6

III. Storage and Handling:

Store the kit at -20°C, protect from light. Allow Assay Buffer to warm to room temperature before use. Briefly centrifuge vials before opening. Read the entire protocol before the assay.

IV. Reagent preparation:

Probe: Ready to use as supplied. Warm to room temperature to thaw the DMSO solution before use. Store at -20°C, protect from light. Use within two months.

Enzyme Mix: Dissolve in 220 µl Distilled Water. Store at -20°C. Use within two months.

FAD Standard: Dissolve in 100 µl DMSO to generate 10 pmol/µl (10 µM) FAD Standard.

V. FAD Assay Protocol:

1. Standard Curve Preparation:

For the colorimetric assay, dilute the 10 pmol/µl FAD Standard solution to 0.2 pmol/µl by adding 10 µl of FAD Standard to 490 µl of Assay Buffer, mix well. Add 0, 2, 4, 6, 8, 10 µl into a series of wells. Adjust volume to 50 µl/well with Assay Buffer to generate 0, 0.4, 0.8, 1.2, 1.6, 2 pmol/well of the FAD Standard. Use a freshly diluted Standard each time.

For the fluorometric assay, dilute the FAD Standard solution to 0.02 pmol/µl by adding 10 µl of the 10 pmol/µl FAD Standard to 490 µl of Assay Buffer, mix well. Then take 10 µl to 90 µl of Assay Buffer. Add 0, 2, 4, 6, 8, 10 µl into a series of wells. Adjust volume to 50 µl/well with Assay Buffer to generate 0, 0.04, 0.08, 0.12, 0.16, 0.2 pmol/well of the FAD Standard.

2. Sample Preparations:

Homogenize tissue (5 - 20 mg) or cells (1 x 10⁶) in 400 µl of Assay Buffer, centrifuge to remove insoluble material at 13,000 x g for 3 mins. Serum samples should be collected using EDTA to inhibit enzymes that may degrade FAD. Deproteinize sample using perchloric acid precipitation to release FAD from proteins. After deproteinization, add samples directly to 96 well plate, bring the volume to 50 µl/well with Assay Buffer. Approximate sample amount per assay: ~0.1 - 0.5 mg tissue; ~10,000 - 100,000 cultured cells, ~0.1 - 20 µl serum. For unknown samples, we suggest testing several doses of your sample to ensure the readings are within the standard curve range.

- Reaction Mix:** Mix enough reagent for the number of assays to be performed. For each well, prepare a total 50 µl Reaction Mix containing:

46 µl Assay Buffer
2 µl GenieRed Probe*
2 µl Enzyme Mix

Add 50 µl of the Reaction Mix to each well containing FAD Standard and test samples. Mix well.

*** Note:** Fluorometric Assay is 10 fold more sensitive than Colorimetric Assay. Using 0.4 µl/well of the probe will significantly decrease the background reading in fluorometric assay.

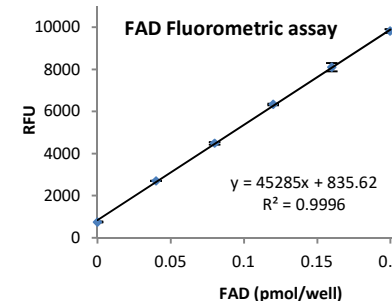
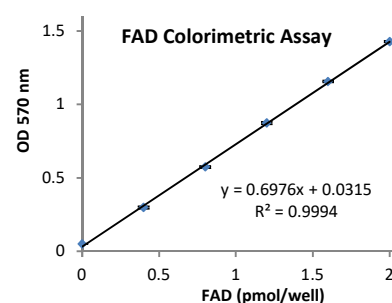
- Incubate the reaction at room temperature.
- Measure OD 570 nm for the colorimetric assay or Ex/Em = 535/587 nm for the fluorometric assay in a micro plate reader. Reading the samples and standards every 5 min. You can stop the reactions by adding 10 µl of Stop Solution; gently shake the plate to mix. The reaction is stable for 24 hr after adding stop solution. Use the data on the time that shows maximum linear readings. The reaction is linear with time until OD 570 nm reaches 1.8 in the colorimetric assays.
- Calculation:** Correct background by subtracting the value derived from the 0 FAD control from all sample readings (The background reading can be significant and must be subtracted from sample readings). Plot FAD standard Curve, FAD concentrations of the test samples can then be calculated:

$$C = S_a/S_v \text{ pmol/}\mu\text{l or } \mu\text{M}$$

Where: S_a is the sample amount of unknown (in pmol) from standard curve,

S_v is sample volume (in µl) added into the wells.

FAD Molecular Weight is 785.55 g/mol.



FAD Standard Curve. Assays were performed following this protocol, reading after 15 min incubation.

FOR RESEARCH USE ONLY! Not to be used on humans.

GENERAL TROUBLESHOOTING GUIDE:

Problems	Cause	Solution
Assay not working	<ul style="list-style-type: none"> • Use of ice-cold assay buffer • Omission of a step in the protocol • Plate read at incorrect wavelength • Use of a different 96-well plate 	<ul style="list-style-type: none"> • Assay buffer must be at room temperature • Refer and follow the data sheet precisely • Check the wavelength in the data sheet and the filter settings of the instrument • Fluorescence: Black plates ; Luminescence: White plates ; Colorimeters: Clear plates
Samples with erratic readings	<ul style="list-style-type: none"> • Use of an incompatible sample type • Samples prepared in a different buffer • Samples were not deproteinized (if indicated in datasheet) • Cell/ tissue samples were not completely homogenized • Samples used after multiple free-thaw cycles • Presence of interfering substance in the sample • Use of old or inappropriately stored samples 	<ul style="list-style-type: none"> • Refer data sheet for details about incompatible samples • Use the assay buffer provided in the kit or refer data sheet for instructions • Use the 10 kDa spin cut-off filter or PCA precipitation as indicated • Use Dounce homogenizer (increase the number of strokes); observe for lysis under microscope • Aliquot and freeze samples if needed to use multiple times • Troubleshoot if needed, deproteinize samples • Use fresh samples or store at correct temperatures till use
Lower/ Higher readings in Samples and Standards	<ul style="list-style-type: none"> • Improperly thawed components • Use of expired kit or improperly stored reagents • Allowing the reagents to sit for extended times on ice • Incorrect incubation times or temperatures • Incorrect volumes used 	<ul style="list-style-type: none"> • Thaw all components completely and mix gently before use • Always check the expiry date and store the components appropriately • Always thaw and prepare fresh reaction mix before use • Refer datasheet & verify correct incubation times and temperatures • Use calibrated pipettes and aliquot correctly
Readings do not follow a linear pattern for Standard curve	<ul style="list-style-type: none"> • Use of partially thawed components • Pipetting errors in the standard • Pipetting errors in the reaction mix • Air bubbles formed in well • Standard stock is at an incorrect concentration • Calculation errors • Substituting reagents from older kits/ lots 	<ul style="list-style-type: none"> • Thaw and resuspend all components before preparing the reaction mix • Avoid pipetting small volumes • Prepare a master reaction mix whenever possible • Pipette gently against the wall of the tubes • Always refer the dilutions in the data sheet • Recheck calculations after referring the data sheet • Use fresh components from the same kit
Unanticipated results	<ul style="list-style-type: none"> • Measured at incorrect wavelength • Samples contain interfering substances • Use of incompatible sample type • Sample readings above/below the linear range 	<ul style="list-style-type: none"> • Check the equipment and the filter setting • Troubleshoot if it interferes with the kit • Refer data sheet to check if sample is compatible with the kit or optimization is needed • Concentrate/ Dilute sample so as to be in the linear range
Note: The most probable list of causes is under each problem section. Causes/ Solutions may overlap with other problems.		