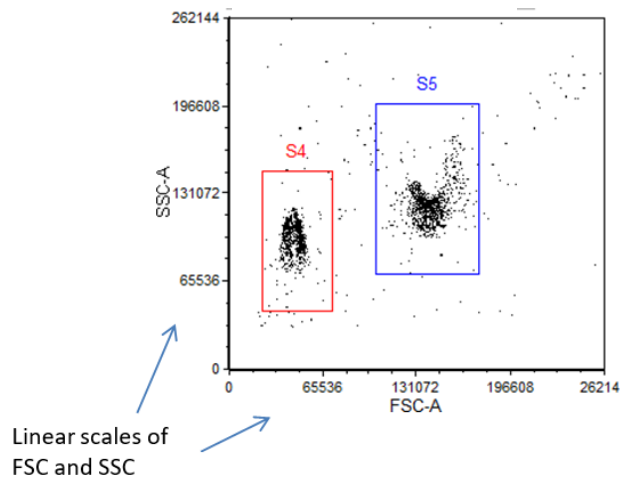
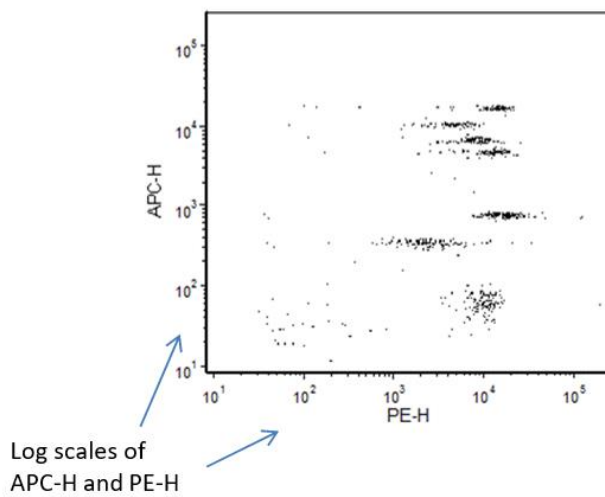


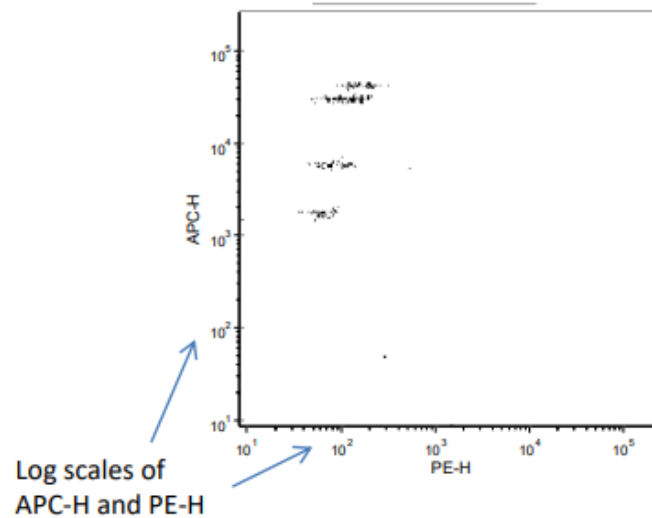
LSRII Setting Recommendations for GeniePlex Assays



Gated on S4



Gated on S5



LSRII Setting Recommendations for GeniePlex Assays

Settings that can be used as a start for further adjustment according to each individual LSRII-

- FSC: Voltage 643 LIN
- SSC: Voltage 236 LIN
- PE: Voltage 401 LOG
- APC: Voltage 319 LOG

No colour compensation is needed.

“Threshold” should be set on either FSC or SSC to remove debris on the FSC/SSC dot plot (If Threshold is set on FSC, 20,000 can be set. Further adjustment may be needed according to individual LSR II.)

Both Areas and Heights of PE and APC should be collected.