

AssayGenie



# Validated Antibody Guide



80,000

*ANTIBODIES*

**80,000 Antibodies | 20+ Species**

**Cancer | Immunology | Neuroscience | Preclinical Models**

**IHC | WB | ICC | FC | CHIP | ELISA**

# HIGH QUALITY VALIDATED ANTIBODIES

## THE MISSION

Our mission is to make scientists smile through innovative products, remarkable interactions with our team and our little Genies!



**COLM RYAN PhD**  
CEO & co-founder of  
Assay Genie



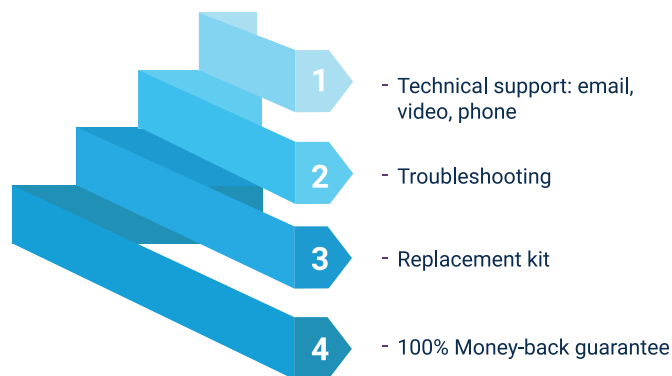
**SEÁN MAC FHEARRAIGH PhD**  
CTO & co-founder of  
Assay Genie

## Maximum Support & Guarantee

Assay Genie provides excellence in support to all our customers!

Not only do we provide you with application based support before, during and after your experiments, but on those rare occasions when problems arise, we have a defined series of customer-centric steps to ensure that you are happy with our products.

So, don't worry, we also offer a 100% money-back guarantee should our products not perform as specified.



## Rapid Global Delivery

Whether you are served by one of our trusted local distributors or are part of our direct sales network, we endeavour to ship your products to you on-time, every time!

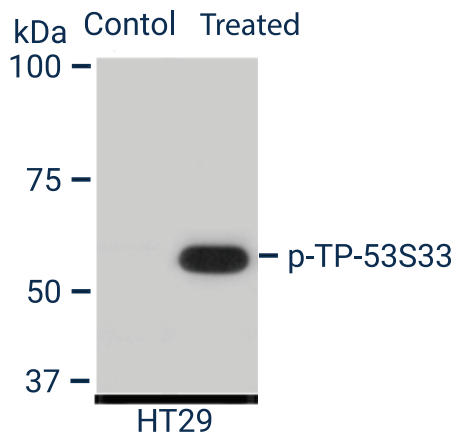
Contact us 24/7 on [www.info@assaygenie.com](mailto:www.info@assaygenie.com) to find our shipping times to your laboratory.



# ANTIBODY TECHNOLOGIES

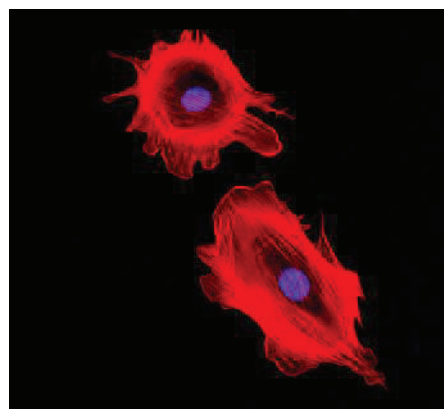
Our high quality validated antibodies can be used in a variety of techniques such as: ELISA, Western Blot, Flow Cytometry, Immunofluorescence (IF), Immunohistochemistry (IHC), ChIP & ChIP-seq.

## Validated Western Blot Antibodies



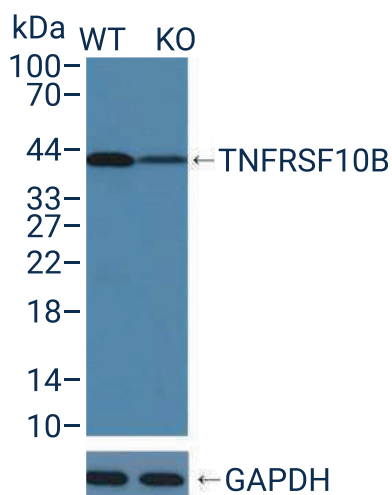
WB: Anti-phospho-p-53S33

## Validated Immunofluorescence (IF) Antibodies



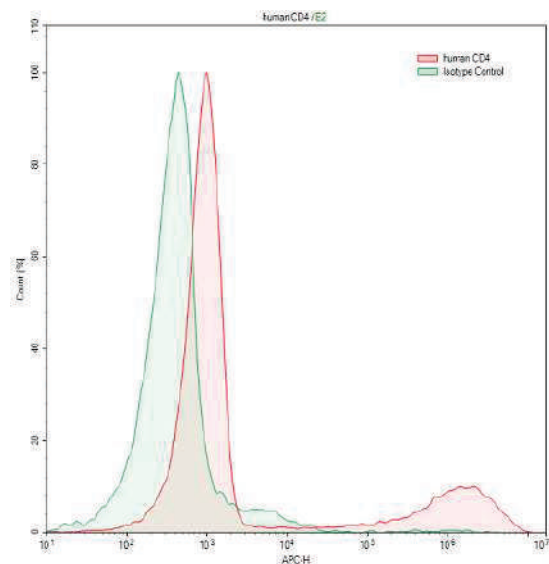
IHC: Anti-Actin

## CRISPR Knockout Validated Antibodies



WB: Anti-TNFRSF10B

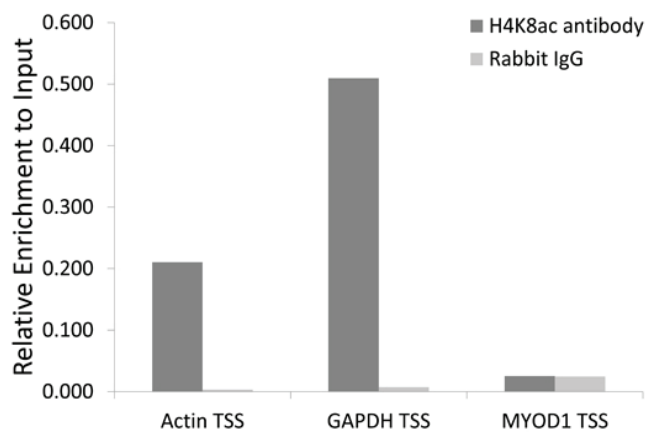
## Validated Flow Cytometry(FC) Antibodies



FC: Anti-CD4 APC

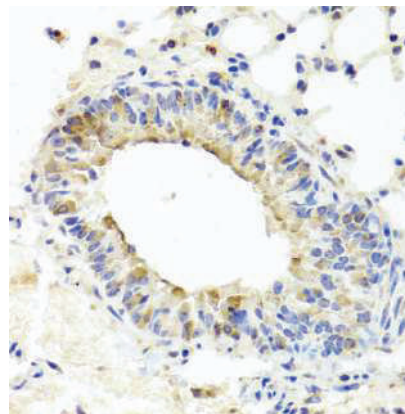
# VALIDATED ANTIBODY DATA

## Validated Chromatin Immunoprecipitation (ChIP) Antibodies



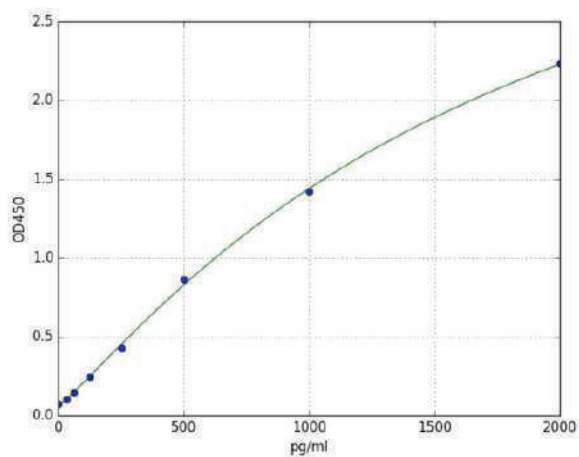
ChIP: Anti-Acetyl-Histone H-4K8

## Validated IHC Antibodies



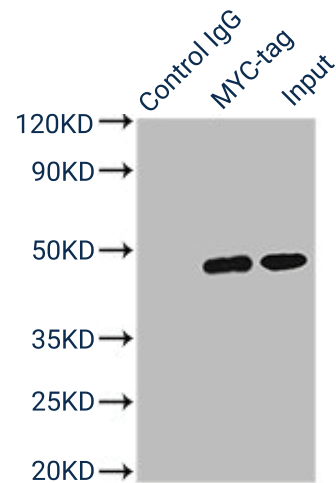
IHC: Anti-CA125

## Validated ELISA Antibodies



ELISA: Anti-IL4-

## Validated Secondary & Tag Antibodies



WB: Anti-MYC tag

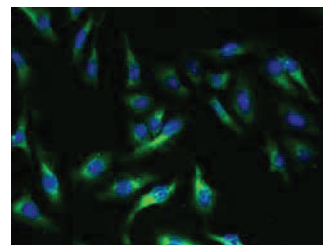
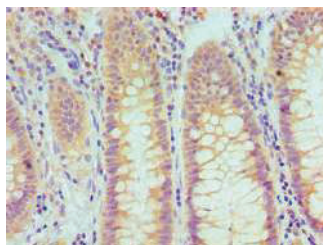
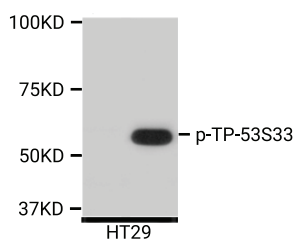
# CANCER

Cancer is defined as a group of diseases involving abnormal cell growth. During cancer development, the body's cells begin to divide without stopping and eventually spread to the surrounding tissue. The hallmarks of cancer, as defined by Douglas Hanahan and Robert A. Weinberg, comprise of ten biological capabilities acquired during the multistep development of human tumours. These have been recently updated to include abnormal metabolic pathways, inflammation, genomic instability and immune system evasion.



## TOP TARGETS

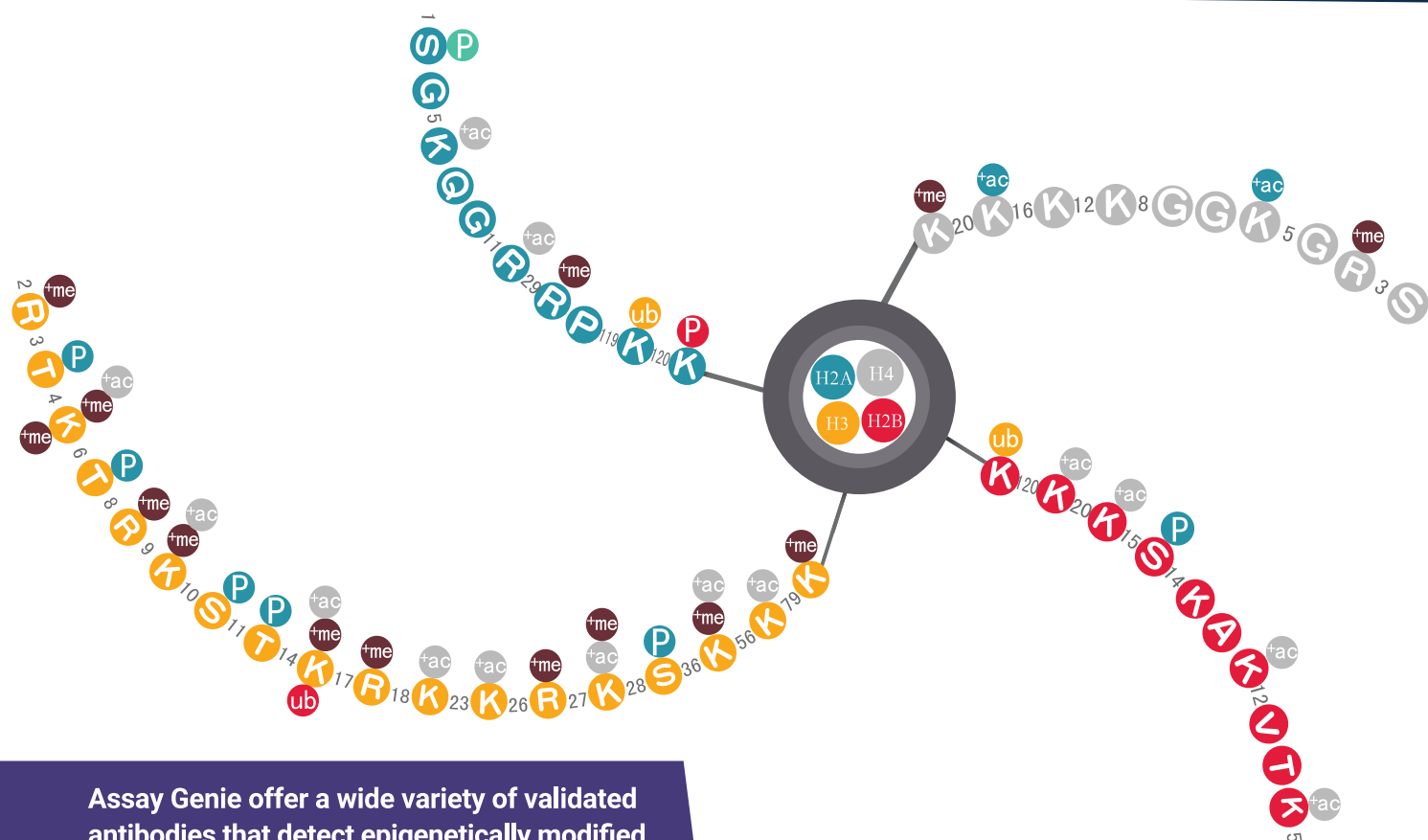
p53	ALK	IGF
AKT1	EGFR	PDL1-
ERK1   Phospho-ERK1	TGFb	BCL2-



**Search**

Over 80,000 Antibodies @ [www.assaygenie.com](http://www.assaygenie.com)

# EPIGENETICS



Assay Genie offer a wide variety of validated antibodies that detect epigenetically modified proteins. Key epigenetic marks include:

- Phosphorylation
- Acetylation
- Methylation
- ChIP grade antibodies

Epigenetic modifications include (but are not limited to) DNA methylation, acetylation, methylation and phosphorylation of histone proteins. These can alter chromatin structure and regulate gene expression.

## TOP TARGETS

Histone H2A   H2B   H3   H4	p53   Ac-p53   phopho-p53
H2A & H2B   Ac   Me   Phospho	PPARα & PPARγ
H3 & H4   Ac   Me   Phospho	STAT1 - STAT6
SIRT1 - SIRT7	GATA1 - GATA6
HDAC1 - HDAC9	DNMT1 - DNMT3

Search

Over 80,000 Antibodies @ [www.assaygenie.com](http://www.assaygenie.com)

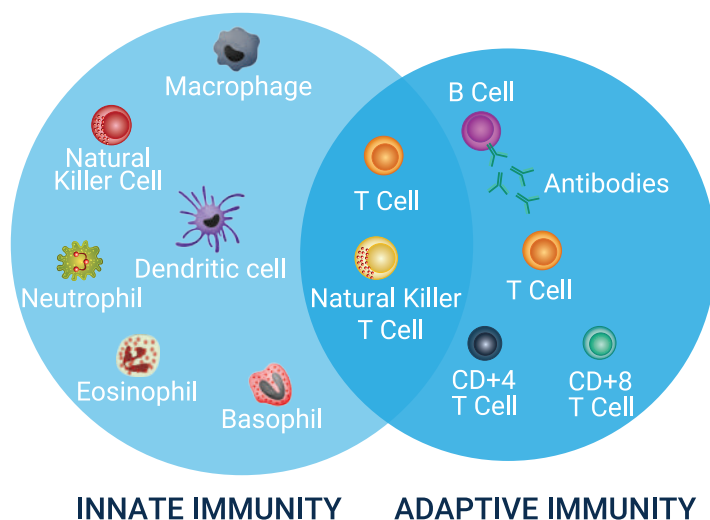


# IMMUNOLOGY AND INFECTION

The immune system protects us from infection through 2 lines of defence, the innate and adaptive immune system. The immune system is highly regulated and balanced. Perturbations can result in disease or contribute to disease development.

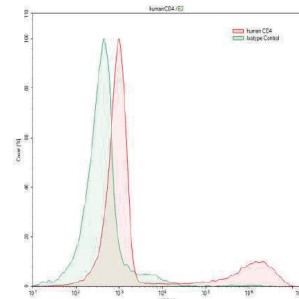
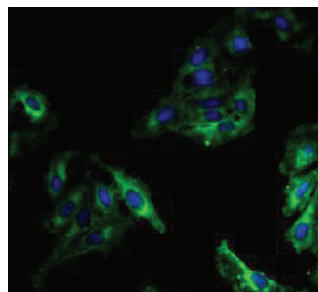
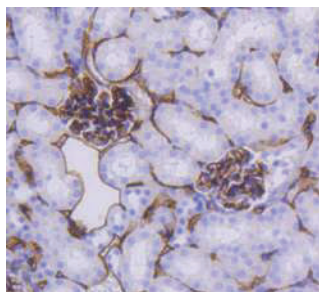
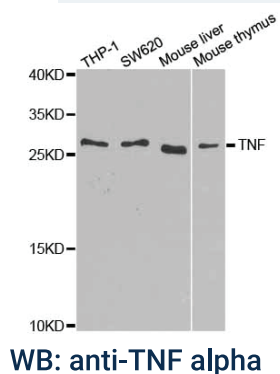
Dysregulation alters the way our immune system functions, having implications in:

- Autoimmunity
- Allergies
- Asthma
- Cancer
- Transplants and vaccines
- Cardiovascular and metabolic diseases.



## TOP TARGETS

Interleukin1- (IL1-) to IL39-	IDO1 & IDO2
Interleukin Receptors	TLR1 - TLR10
TNF-alpha	PD1-
CD3   CD4   CD8   CD20   CD56	CTLA4-
CD274/PD-L1	IFN $\alpha$   IFN $\beta$   IFN $\gamma$   IFN $\lambda$



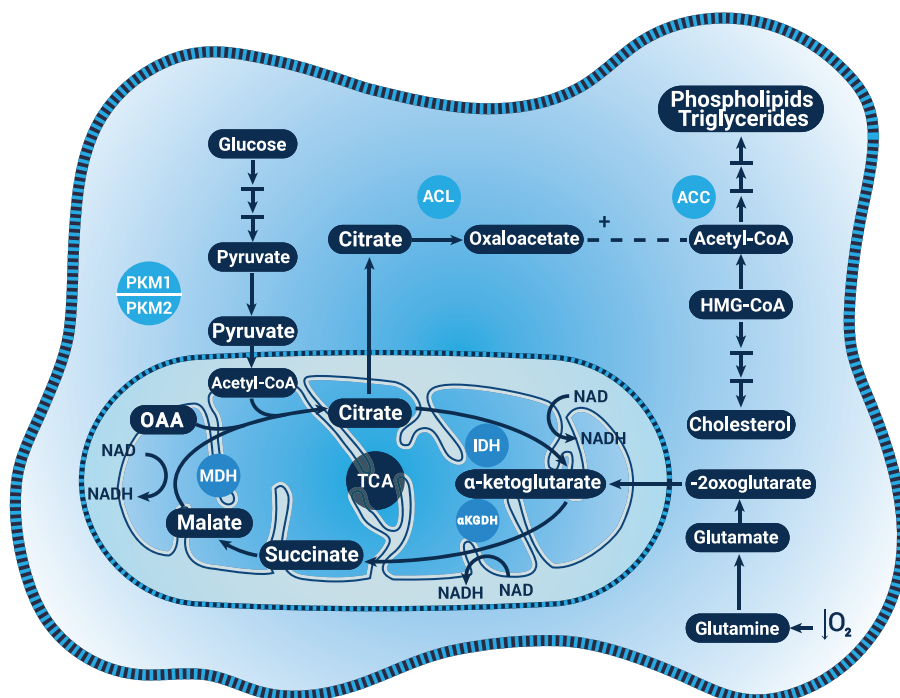
Search

Over 80,000 Antibodies @ [www.assaygenie.com](http://www.assaygenie.com)

# METABOLISM

Metabolism is the sum of biochemical processes in living organisms that either produce or consume energy. Alterations in metabolic processes can be identified in many common human diseases such as cancer, diabetes, obesity and heart disease.

Metabolism also plays an important role in cell signalling and provides the substrates necessary for post-translational modifications responsible for the regulation of protein trafficking, localisation and enzyme activity.



## TOP TARGETS

IDH1 & IDH2	MDH1 & MDH2
ACC1 & ACC2	IDO & TDO
ADH1 - ADH8	PKM
LEPR	HIF1- & SREBP
LDH	GLUT1 - GLUT4

Search

Over 80,000 Antibodies @ [www.assaygenie.com](http://www.assaygenie.com)



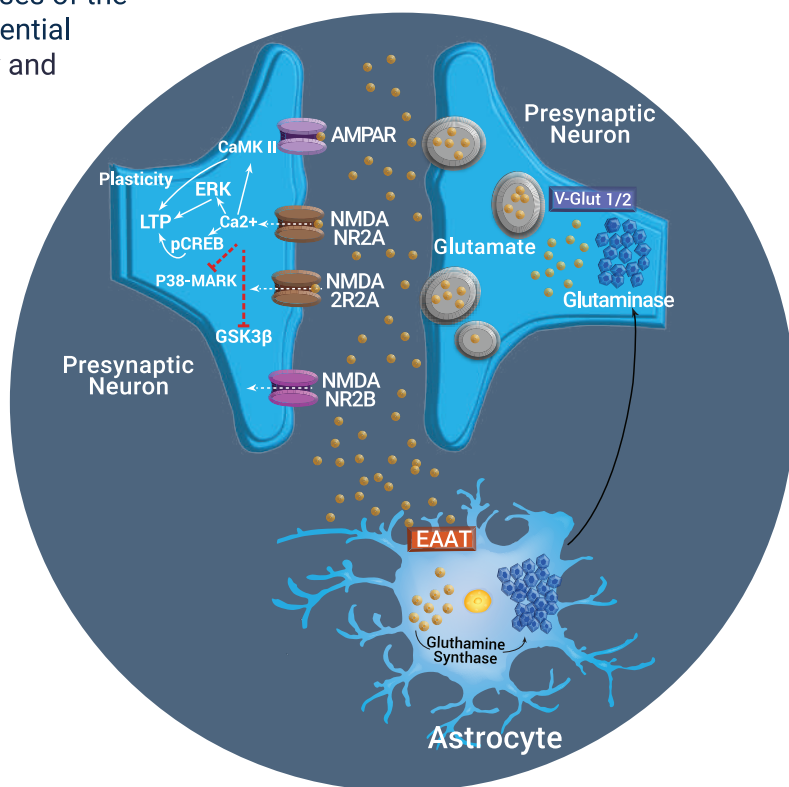
# NEUROSCIENCE

Neuroscience investigates the complex processes of the nervous system enabling investigation into essential functions such as movement, memory and learning.

Medical applications of neuroscience research encompass 3 key areas.

1. Synapses, cognition and behaviour.
2. Neurodegeneration, neuroprotection and neurorepair.
3. Neuropsychiatry and neurodevelopmental disorders.

Many neurological disorders under investigation combine a variety of different disciplines such as immunology, biochemistry, pharmacology, physiology and psychology.



**NMDA signalling pathway**

## TOP TARGETS

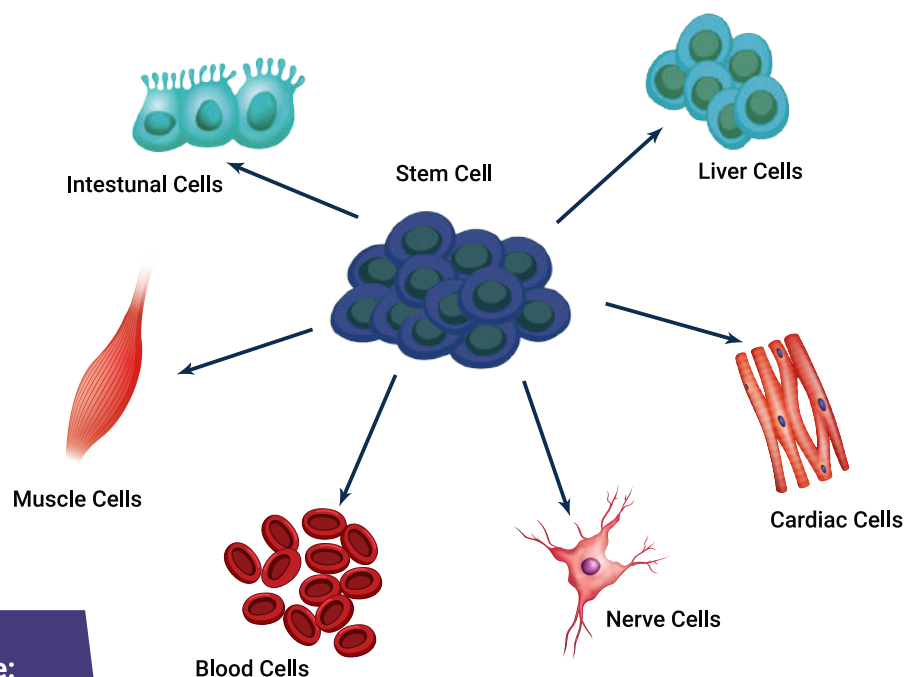
GFAP	GAD65
APP	GFP
BDNF	GPCRs
NGF	NFL
NeuN/RBFOX3	NOS

**Search**

Over 80,000 Antibodies @ [www.assaygenie.com](http://www.assaygenie.com)

# STEM CELLS AND DEVELOPMENTAL BIOLOGY

Stem cells are multipotent cells with the ability to differentiate into a multitude of cell types. Developmental biology primarily focuses on how genes regulate cell growth and differentiation from stem cells to the formation of tissues and organs. Human embryonic stem cells serve as an unlimited source for cells and as a result of this offer great therapeutic potential.



Key areas of stem cells research include:

- Hematopoietic Stem Cells
- Cardiac Stem Cells
- Cancer Stem Cells
- Neuronal Stem Cells

## TOP TARGETS

NANOG	CD34   CD133   CD56   CD105   CD271
HOXA1 - HOXA6	SSEA1/FUT4
OCT4/OCT3/POU5F1	Podocalyxin/TRA-1-60
SOX1 - SOX10	Nestin
CBX2 - CBX8	KIT/SCF-R

Search

Over 80,000 Antibodies @ [www.assaygenie.com](http://www.assaygenie.com)

# SPECIES SPECIFIC VALIDATED ANTIBODIES



**Horse Validated  
Antibodies**



**Goat Validated  
Antibodies**



**Cat Validated  
Antibodies**



**Rabbit Validated  
Antibodies**



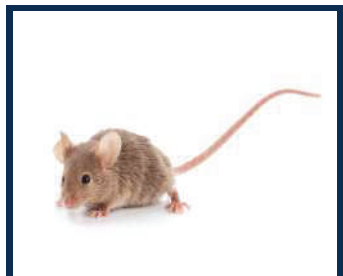
**Dog Validated  
Antibodies**



**Sheep Validated  
Antibodies**



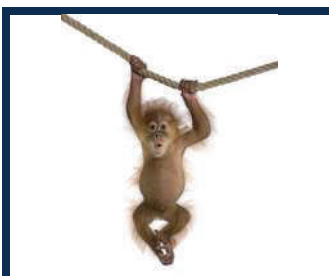
**Hamster Validated  
Antibodies**



**Mouse Validated  
Antibodies**



**Guinea Pig Validated  
Antibodies**



**Monkey Validated  
Antibodies**



**Bird Validated  
Antibodies**



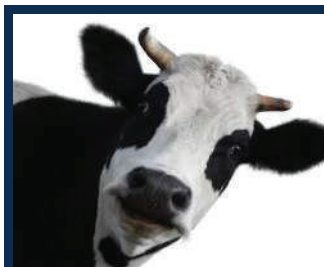
**Porcine Validated  
Antibodies**



**Fish Validated  
Antibodies**



**Plant Validated  
Antibodies**



**Bovine Validated  
Antibodies**



**Rat Validated  
Antibodies**



**Chicken Validated  
Antibodies**



**Human Validated  
Antibodies**

“ Used by  
scientists in  
**70+**  
countries ”

## We love feedback!

Our growth and ideas are powered by smiling scientists so  
get involved in our community & conversations!

Order at [www.assaygenie.com](http://www.assaygenie.com)



[www.assaygenie.com](http://www.assaygenie.com) | Assay Genie 2022

25 Windsor Place, Dublin, Ireland | 2 Duke St., London, UK

