

AssayGenie



Validated Antibody Guide



80,000

ANTIBODIES

Cancer | Immunology | Neuroscience | Preclinical Models

IHC | WB | ICC | FC | ChIP | ELISA | 20+ Species

Blocking | Neutralization | Cell Depletion | in vivo grade

MISSION & BRAND PROMISE

THE MISSION

Our mission is to make scientists smile through innovative products, remarkable interactions with our team and our little Genies!



COLM RYAN PhD
CEO & co-founder of
Assay Genie



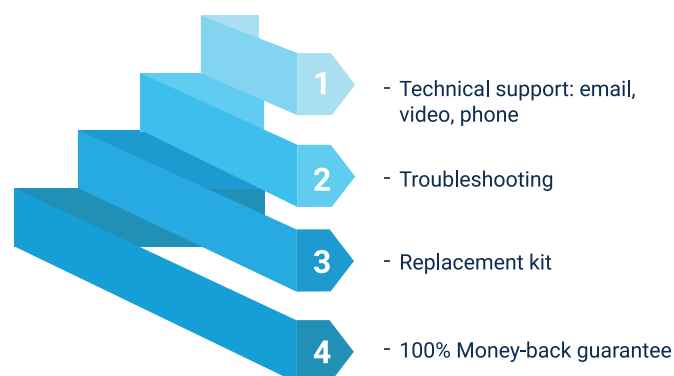
SEÁN MAC FHEARRAIGH PhD
CTO & co-founder of
Assay Genie

Maximum Support & Guarantee

Assay Genie provides excellence in support to all our customers!

Not only do we provide you with application based support before, during and after your experiments, but on those rare occasions when problems arise, we have a defined series of customer-centric steps to ensure that you are happy with our products.

So, don't worry, we also offer a 100% money-back guarantee should our products not perform as specified.



Rapid Global Delivery

Whether you are served by one of our trusted local distributors or are part of our direct sales network, we endeavour to ship your products to you on-time, every time!

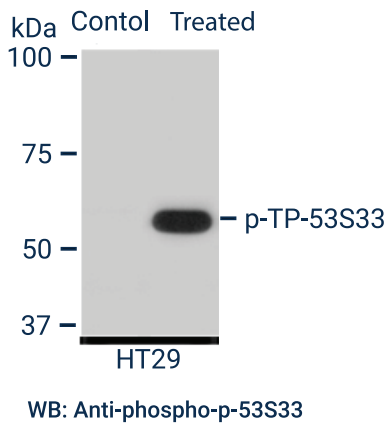
Contact us 24/7 on www.info@assaygenie.com to find our shipping times to your laboratory.



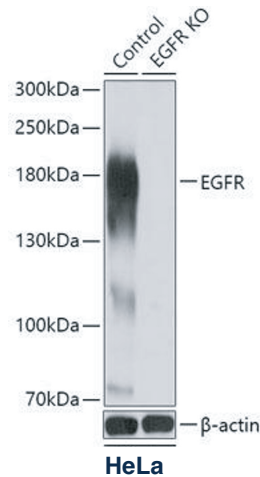
ANTIBODY TECHNOLOGIES

Our high quality validated antibodies can be used in a variety of techniques such as: ELISA, Western Blot, Flow Cytometry, Immunofluorescence (IF), Immunohistochemistry (IHC), ChIP & ChIP-seq.

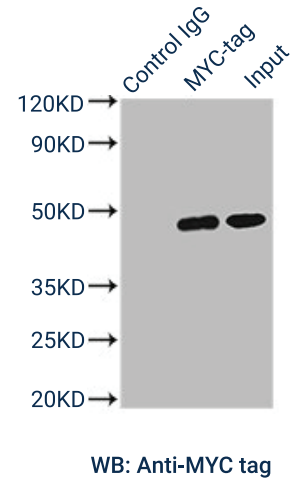
Validated Western Blot Antibodies



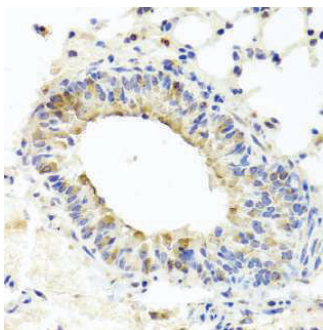
KO Validated Antibodies



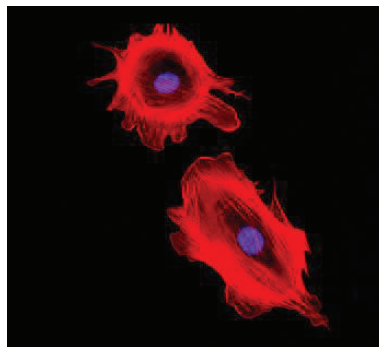
Validated Secondary & Tag Antibodies



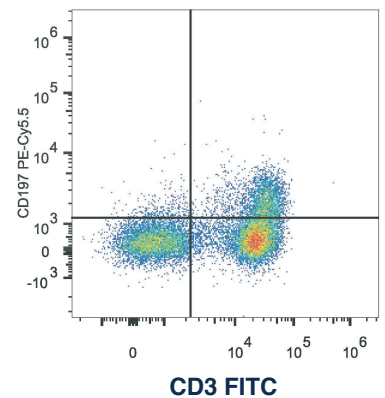
Validated IHC Antibodies



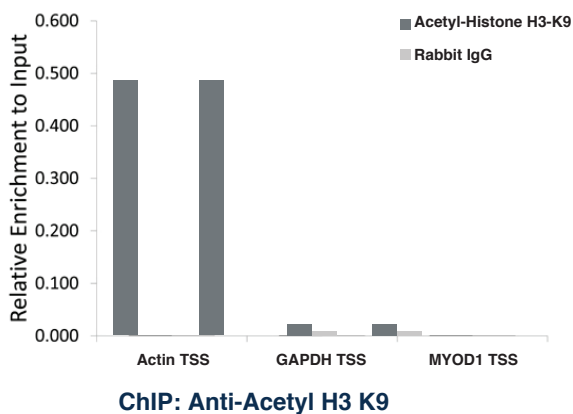
Validated Immunofluorescence (IF) Antibodies



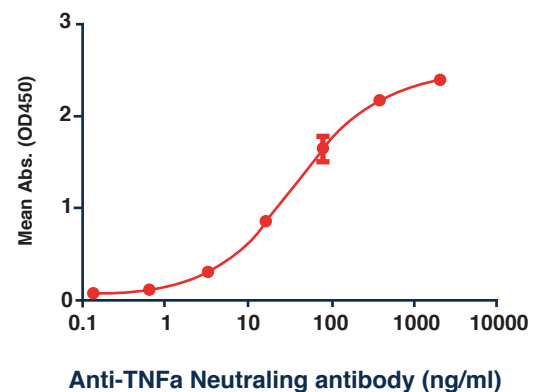
Flow Cytometry Antibodies



Validated Chromatin Immunoprecipitation (ChIP) Antibodies



Anti-TNFα (Adalimumab biosimilar) 0.1µg of Human TNFα, His Tagged protein per well

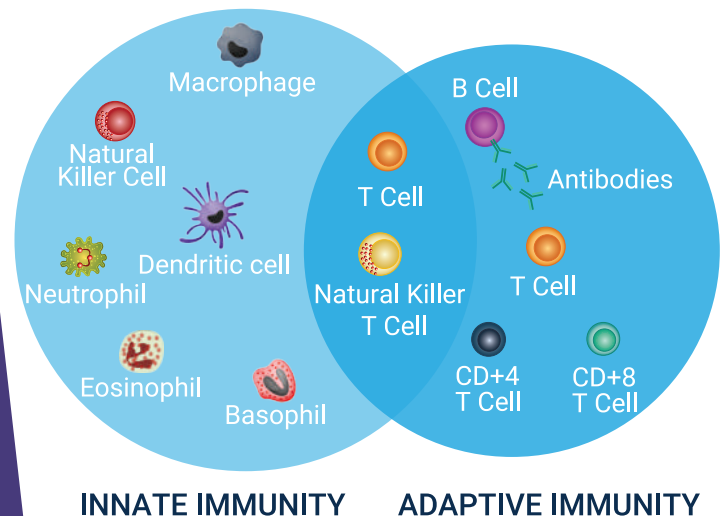


FUNCTIONAL GRADE IN VIVO ANTIBODIES

Assay Genie in vivo functional-grade monoclonal antibodies are high purity, low endotoxin cGMP mAbs that are especially formulated for preclinical animal studies & functional assays such as blocking, neutralization, activation and cell depletion.

Key Features

- 200 mAbs: anti-mouse, anti-human, anti-NHP & more
- Bioactive grade: blocking, neutralization, stimulation, depletion
- Very Low Endotoxin: ≤ 0.5 EU/mg to ≤ 1 EU/mg
- In vivo grade: no leachable protein A or aggregates
- Highly Purity: $\geq 95\%$ to $\geq 98\%$
- cGMP / ISO 9001:2015 / ISO 13485:2015
- ELISA, FC, IHC, IP, WB, ELISpot, CODEX® & CyTOF®
- 1mg, 5mg, 25mg, 50mg & 100mg pack sizes



TOP TARGETS

PD-1, PD-L1, CTLA-4

CD3, CD3e, CD4, CD8

IFN α , IFN β & IFN γ

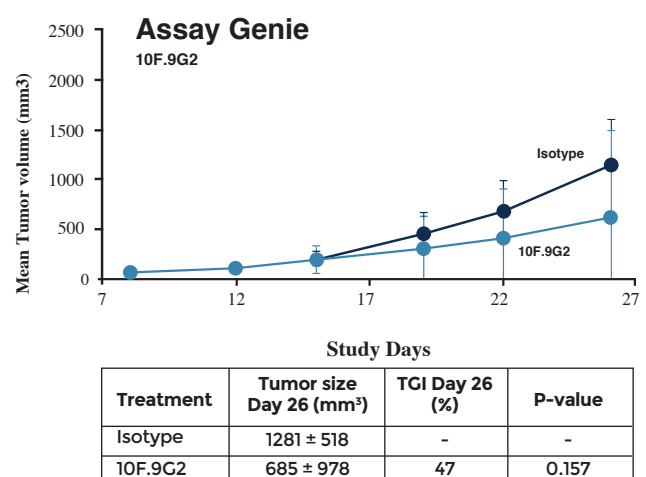
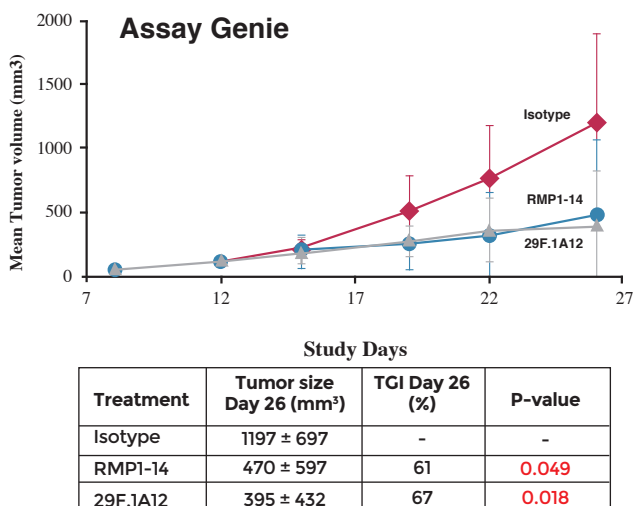
TNF α , GM-CSF, TGF β

IL-1 β , IL-2, IL-4, IL-10

IL-6R

NK1.1

CD11c, CD14, CD16, CD7, CD318



Independent comparison of the in vivo efficacy and tolerability of clones of mAbs anti-PD-1 [RMP1-14 and 29F.1A12] & anti-PD-L1 [10F.9G2], and isotype controls using a CT26 syngeneic model (murine colorectal carcinoma derived from BALB/c mice). All antibodies had matching isotype controls, and phosphate-buffered saline (PBS) was used as a control.

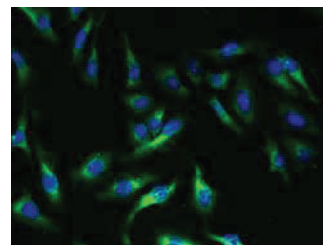
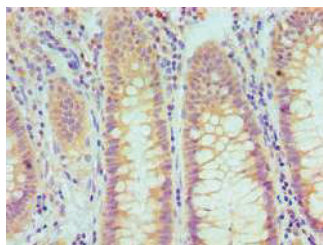
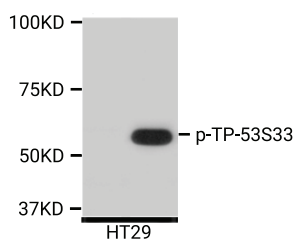
CANCER

Cancer is defined as a group of diseases involving abnormal cell growth. During cancer development, the body's cells begin to divide without stopping and eventually spread to the surrounding tissue. The hallmarks of cancer, as defined by Douglas Hanahan and Robert A. Weinberg, comprise of ten biological capabilities acquired during the multistep development of human tumours. These have been recently updated to include abnormal metabolic pathways, inflammation, genomic instability and immune system evasion.



TOP TARGETS

p53	ALK	IGF
AKT1	EGFR	PDL1
ERK1 Phospho-ERK1	TGFb	BCL2



Search

Over 80,000 Antibodies @ www.assaygenie.com

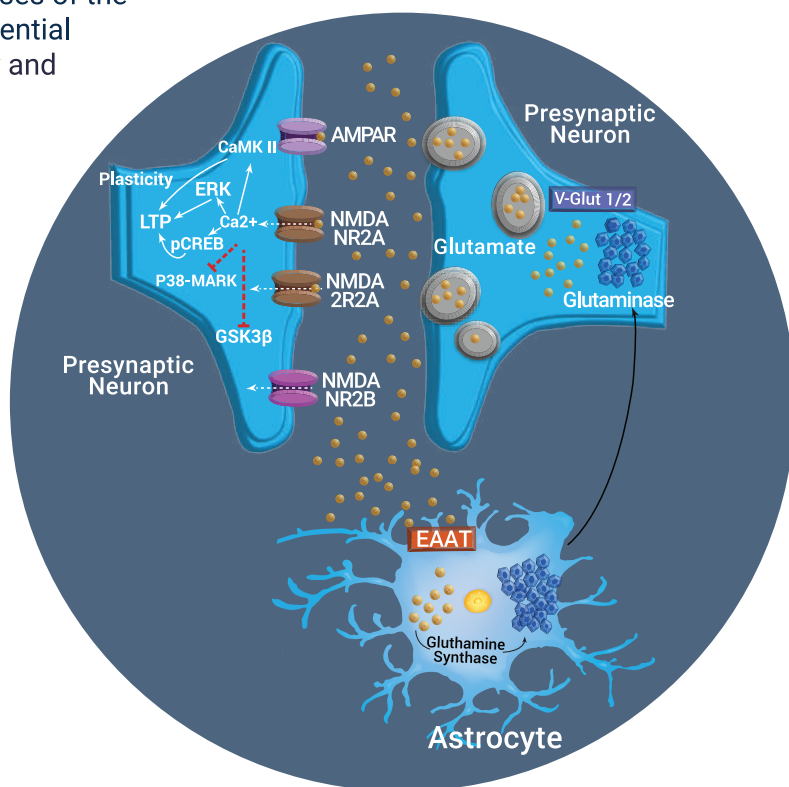
NEUROSCIENCE

Neuroscience investigates the complex processes of the nervous system enabling investigation into essential functions such as movement, memory and learning.

Medical applications of neuroscience research encompass 3 key areas.

1. Synapses, cognition and behaviour.
2. Neurodegeneration, neuroprotection and neurorepair.
3. Neuropsychiatry and neurodevelopmental disorders.

Many neurological disorders under investigation combine a variety of different disciplines such as immunology, biochemistry, pharmacology, physiology and psychology.



NMDA signalling pathway

TOP TARGETS

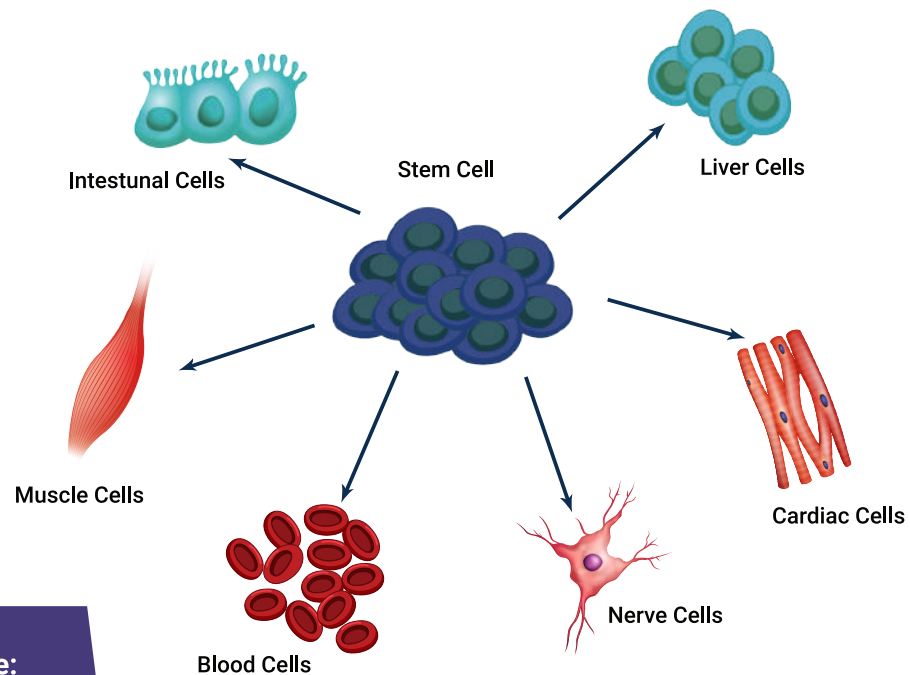
GFAP	GAD65
APP	GFP
BDNF	GPCRs
NGF	NFL
NeuN/RBFOX3	NOS

Search

Over 80,000 Antibodies @ www.assaygenie.com

STEM CELLS AND DEVELOPMENTAL BIOLOGY

Stem cells are multipotent cells with the ability to differentiate into a multitude of cell types. Developmental biology primarily focuses on how genes regulate cell growth and differentiation from stem cells to the formation of tissues and organs. Human embryonic stem cells serve as an unlimited source for cells and as a result of this offer great therapeutic potential.



Key areas of stem cells research include:

- Hematopoietic Stem Cells
- Cardiac Stem Cells
- Cancer Stem Cells
- Neuronal Stem Cells

TOP TARGETS

NANOG	CD34 CD133 CD56 CD105 CD271
HOXA1 - HOXA6	SSEA1/FUT4
OCT4/OCT3/POU5F1	Podocalyxin/TRA-1-60
SOX1 - SOX10	Nestin
CBX2 - CBX8	KIT/SCF-R

Search

Over 80,000 Antibodies @ www.assaygenie.com

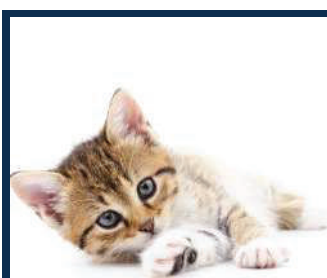
SPECIES SPECIFIC VALIDATED ANTIBODIES



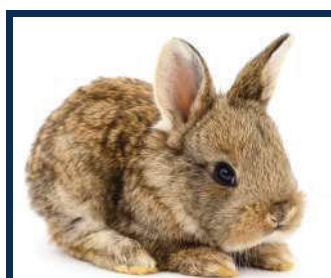
**Horse Validated
Antibodies**



**Goat Validated
Antibodies**



**Cat Validated
Antibodies**



**Rabbit Validated
Antibodies**



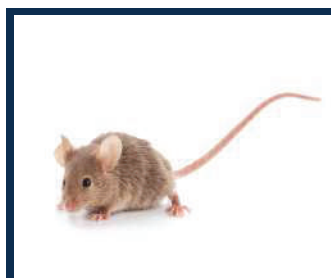
**Dog Validated
Antibodies**



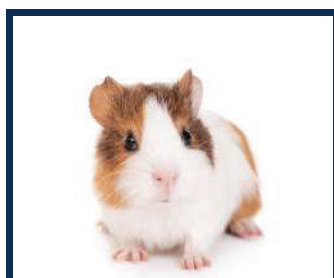
**Sheep Validated
Antibodies**



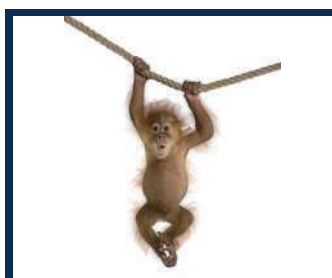
**Hamster Validated
Antibodies**



**Mouse Validated
Antibodies**



**Guinea Pig Validated
Antibodies**



**Monkey Validated
Antibodies**



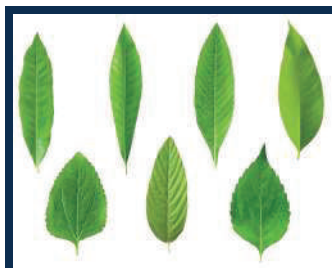
**Bird Validated
Antibodies**



**Porcine Validated
Antibodies**



**Fish Validated
Antibodies**



**Plant Validated
Antibodies**



**Bovine Validated
Antibodies**



**Rat Validated
Antibodies**



**Chicken Validated
Antibodies**



**Human Validated
Antibodies**

