

## Recombinant Human CD147/Basigin Protein (His Tag)

**Catalog No:** RPES0031

**Category:** Recombinant Protein

### Sequence Information

**Species:** Human

**Sequence:** Ala22-His205

**Accession:** P35613-2

**Tag:** C-6His

### Product Information

**Synonyms:** Basigin; 5F7; Collagenase Stimulatory Factor; Extracellular Matrix Metalloproteinase Inducer; EMMPRIN; Leukocyte Activation Antigen M6; OK Blood Group Antigen; Tumor Cell-Derived Collagenase Stimulatory Factor; TCSF; CD147; BSG

**Source:** Human Cells

**Purity:** > 95 % as determined by reducing SDS-PAGE.

**Endotoxin:** < 1.0 EU per µg as determined by the LAL method.

**Formulation:** Lyophilized from a 0.2 µM filtered solution of 20mM PB, 150mM NaCl, pH 7.2.

**Reconstitution:** Please refer to the printed manual for detailed information.

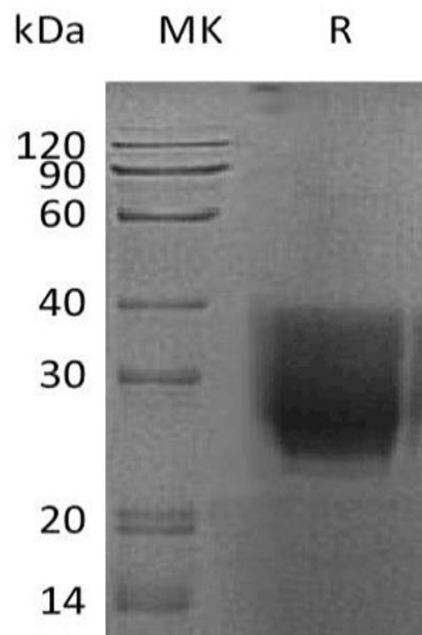
**Storage:** Lyophilized proteins are stable for up to 12 months when stored at -20 to -80°C. Reconstituted protein solution can be stored at 4-8°C for 2-7 days. Aliquots of reconstituted samples are stable at < -20°C for 3 months.

**Shipping:** This product is provided as lyophilized powder which is shipped with ice packs.

### Background

Extracellular Matrix Metalloproteinase Inducer (EMMPRIIN) belongs to the immunoglobulin superfamily, which has the homology to both the immunoglobulin V domain and MHC class II antigen β-chain. EMMPRIN is a transmembrane glycoprotein with different forms, resulting from different modes of glycosylation and N-terminal sequence variants. EMMPRIN can be expressed in breast cancer, oral squamous cell carcinoma, glioma, lymphoma, lung, bladder, and melanoma carcinomas cells. EMMPRIN promotes invasion, metastasis, growth, and survival of malignant cells, serves as a receptor for extracellular cyclophilin, may play a role in signal transduction.

Image



Contact Details | Dublin, Ireland

Email: [hello@assaygenie.com](mailto:hello@assaygenie.com) | Web: [www.assaygenie.com](http://www.assaygenie.com)

Copyright © 2020 Reagent Genie, All Rights Reserved. All information / detail is correct at time of going to print.