

## Recombinant Mouse Cathepsin B/CTSB Protein (His Tag)

**Catalog No:** RPES0034

**Category:** Recombinant Protein

### Sequence Information

**Species:** Mouse

**Sequence:** Met1-Phe339

**Accession:** P10605

**Tag:** C-6His

### Product Information

**Synonyms:** Cathepsin B;Ctsb;Cathepsin B1

**Source:** Human Cells

**Purity:** > 95 % as determined by reducing SDS-PAGE.

**Endotoxin:** < 1.0 EU per µg as determined by the LAL method.

**Formulation:** Lyophilized from a 0.2 µM filtered solution of PBS, pH 7.4.

**Reconstitution:** Please refer to the printed manual for detailed information.

**Storage:** Lyophilized proteins are stable for up to 12 months when stored at -20 to -80°C.

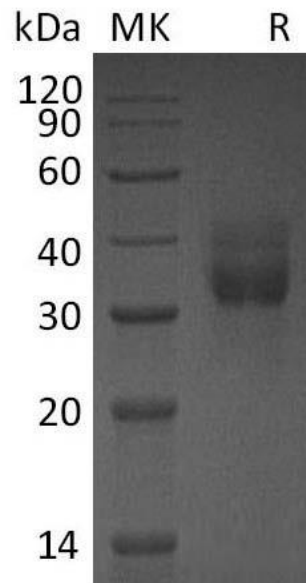
Reconstituted protein solution can be stored at 4-8°C for 2-7 days. Aliquots of reconstituted samples are stable at < -20°C for 3 months.

**Shipping:** This product is provided as lyophilized powder which is shipped with ice packs.

### Background

Cathepsin B (CatB) is an enzymatic protein belonging to the peptidase (or protease) families. It is the first described member of the family of lysosomal cysteine proteases. It is known to process a number of proteins, including pro and active caspases, prorenin and secretory leucoprotease inhibitor (SLPI). It is believed to participate in intracellular degradation and turnover of proteins. Cathepsin B may play a role in activation and inactivation of caspases, activation of renin and inactivation of SLPI, the key steps in apoptosis, angiotensin production, and progression of emphysema, respectively. Cathepsin B may also have a role in invasion and metastasis.

Image



Contact Details | Dublin, Ireland

Email: [hello@assaygenie.com](mailto:hello@assaygenie.com) | Web: [www.assaygenie.com](http://www.assaygenie.com)

Copyright © 2020 Reagent Genie, All Rights Reserved. All information / detail is correct at time of going to print.