

ROCK1 Polyclonal Antibody

CAB0144

Description

This ROCK1 Polyclonal Antibody is supplied as a kit for advanced applications. The kit includes Bradford Reagent to quantify total protein concentration for accurate sample normalization (Optional).

Product Information

SKU:	CAB0144
Contents:	20 µL, 100 µL Bradford Reagent: 1 vial (2ml)
Category:	Polyclonal Antibody
Synonyms:	ROCK-I, P160ROCK, ROCK1
Clone:	-
Applications:	WB IP ELISA IF-P
Conjugation:	Unconjugated
Reactivity:	Human, Mouse, Rat

Antibody Data

Gene ID:	6093
Uniprot:	AB_2772058
Host Species:	Rabbit
Purification:	Affinity purification
Observed MW:	158kDa
Calculated MW:	158kDa

Preparation & Storage

Storage: Store at -20°C. Avoid freeze / thaw cycles. Buffer: PBS containing 50% glycerol, preserved with proclin300 or sodium azide (as specified on the Certificate of Analysis), pH 7.3.

Store Bradford Reagent at Room Temperature for 1 Year.

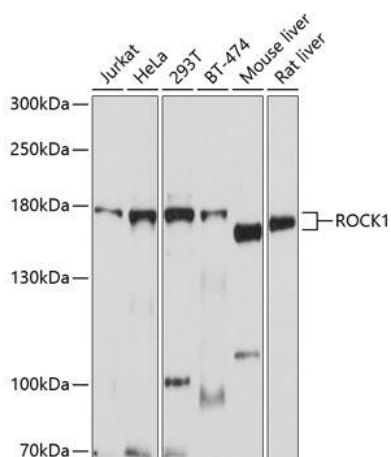
Positive Sample: Jurkat, HeLa, 293T, BT-474, Mouse liver, Rat liver

Recommended Dilutions:

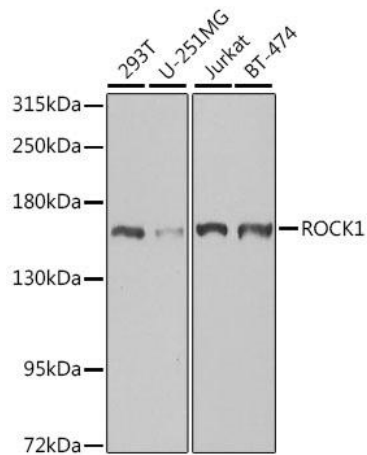
WB	1:500 - 1:2000
IP	0.5µg-4µg antibody for 200µg-400µg extracts of whole cells
IF-P	1:100 - 1:200
ELISA	Recommended starting concentration is 1 µg/mL. Please optimize the concentration based on your specific assay requirements.

Protein Quantification (Optional): To quantify total protein levels, use the Bradford Reagent included in this kit. Visit <https://www.assaygenie.com/bradford-protein-assay-protocol/> to view the full protocol

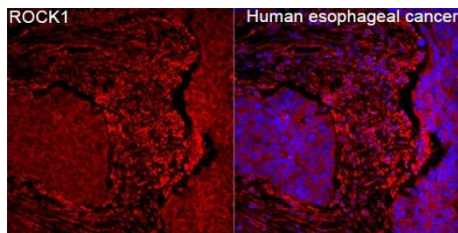
Validation Data



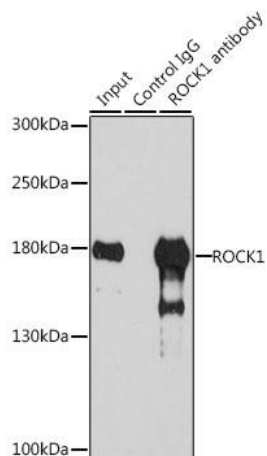
Western blot analysis of various lysates using ROCK1 Rabbit pAb (CAB0144) at 1:1000 dilution. Secondary antibody: HRP-conjugated Goat anti-Rabbit IgG (H+L) (CABS014) at 1:10000 dilution. Lysates/proteins: 25µg per lane. Blocking buffer: 3% nonfat dry milk in TBST. Detection: ECL Enhanced Kit (AbGn00021). Exposure time: 10s.



Western blot analysis of various lysates using ROCK1 Rabbit pAb (CAB0144) at 1:1000 dilution. Secondary antibody: HRP-conjugated Goat anti-Rabbit IgG (H+L) (CABS014) at 1:10000 dilution. Lysates/proteins: 25µg per lane. Blocking buffer: 3% nonfat dry milk in TBST. Detection: ECL Basic Kit (AbGn00020). Exposure time: 90s.



Immunofluorescence analysis of Human esophageal cancer tissue using ROCK1 Rabbit pAb (CAB0144) at a dilution of 1:100 (40x lens). Secondary antibody: Cy3-conjugated Goat anti-Rabbit IgG (H+L)(CABS007) at 1:500 dilution. Blue: DAPI for nuclear staining. High pressure antigen retrieval performed with 0.01M Citrate Buffer (pH 6.0) prior to IF staining.



Immunoprecipitation analysis of 200 µg extracts of 293T cells, using 3 µg ROCK1 antibody (CAB0144). Western blot was performed from the immunoprecipitate using ROCK1 antibody (CAB0144) at a dilution of 1:1000.