

ALDH1A1 Monoclonal Antibody

CAB0157

Description

This ALDH1A1 Monoclonal Antibody is supplied as a kit for advanced applications. The kit includes Bradford Reagent to quantify total protein concentration for accurate sample normalization (Optional).

Product Information

SKU:	CAB0157
Contents:	20 μ L, 100 μ L Bradford Reagent: 1 vial (2ml)
Category:	Monoclonal Antibody
Synonyms:	ALDC, ALDH1, HEL-9, HEL12, PUMB1, ALDH11, RALDH1, ALDH-E1, HEL-S-53e, ALDH1A1
Clone:	ARC52440
Applications:	WB IF/ICC IP ELISA
Conjugation:	Unconjugated
Reactivity:	Human, Mouse, Rat

Antibody Data

Gene ID:	216
Uniprot:	AB_2861455
Host Species:	Rabbit
Purification:	Affinity purification
Observed MW:	55kDa
Calculated MW:	55kDa

Preparation & Storage

Storage: Store at -20°C. Avoid freeze / thaw cycles. Buffer: PBS with 0.09% Sodium azide, 0.05% BSA, 50% glycerol, pH 7.3.

Store Bradford Reagent at Room Temperature for 1 Year.

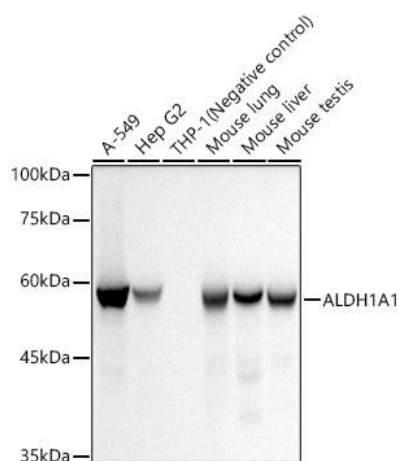
Positive Sample: A549, Hep G2, Mouse lung, Mouse liver, Mouse testis, Rat lung, Rat kidney, Rat testis

Recommended Dilutions:

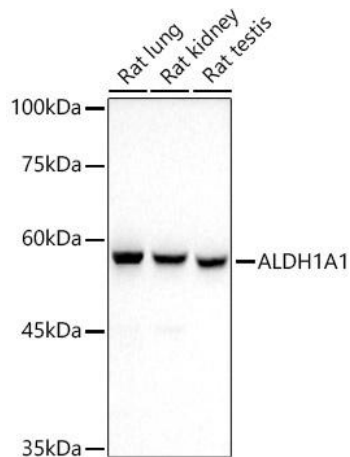
WB	1:10000 - 1:60000
IF/ICC	1:8000 - 1:32000
IP	0.5µg-4µg antibody for 200µg-400µg extracts of whole cells
ELISA	Recommended starting concentration is 1 µg/mL. Please optimize the concentration based on your specific assay requirements.

Protein Quantification (Optional): To quantify total protein levels, use the Bradford Reagent included in this kit. Visit <https://www.assaygenie.com/bradford-protein-assay-protocol/> to view the full protocol

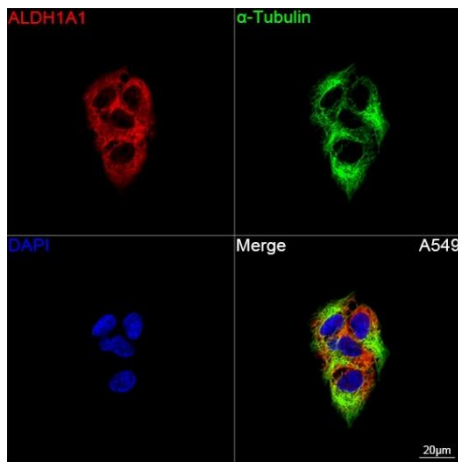
Validation Data



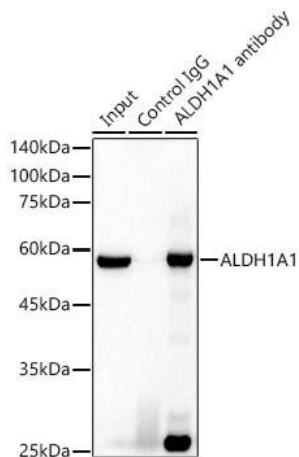
Western blot analysis of various lysates, using ALDH1A1 Rabbit mAb (CAB0157) at 1:20000 dilution. Secondary antibody: HRP-conjugated Goat anti-Rabbit IgG (H+L) (CABS014) at 1:10000 dilution. Lysates/proteins: 25µg per lane. Blocking buffer: 3% nonfat dry milk in TBST. Detection: ECL Basic Kit (AbGn00020). Negative control (NC): THP-1 Exposure time: 10s.



Western blot analysis of various lysates, using ALDH1A1 Rabbit mAb (CAB0157) at 1:20000 dilution. Secondary antibody: HRP-conjugated Goat anti-Rabbit IgG (H+L) (CABS014) at 1:10000 dilution. Lysates/proteins: 25µg per lane. Blocking buffer: 3% nonfat dry milk in TBST. Detection: ECL Basic Kit (AbGn00020). Exposure time: 90s.



Confocal imaging of cells using ALDH1A1 Rabbit mAb (CAB0157, dilution 1:8000) followed by a further incubation with Cy3 Goat Anti-Rabbit IgG (H+L) (CABS007, dilution 1:500) (Red). The cells were counterstained with α-Tubulin Mouse mAb (CABC012, dilution 1:400) followed by incubation with ABflo® 488-conjugated Goat Anti-Mouse IgG (H+L) Ab (, dilution 1:500) (Green). DAPI was used for nuclear staining (Blue). Objective: 100x.



Immunoprecipitation analysis of 300 µg extracts of A-549 cells using 3 µg ALDH1A1 Rabbit mAb antibody (CAB0157). Western blot was performed from the immunoprecipitate using ALDH1A1 Rabbit mAb (CAB0157) at a dilution of 1:20000.