

CaMKII Monoclonal Antibody

CAB0186

Description

This CaMKII Monoclonal Antibody is supplied as a kit for advanced applications. The kit includes Bradford Reagent to quantify total protein concentration for accurate sample normalization (Optional).

Product Information

SKU:	CAB0186
Contents:	20 μ L, 100 μ L Bradford Reagent: 1 vial (2ml)
Category:	Monoclonal Antibody
Synonyms:	CAM2, CAMK2, CAMKB, MRD54, CaMKIIbeta, CaMK2 delta/CAMK2 gamma
Clone:	ARC53334
Applications:	WB IP ELISA
Conjugation:	Unconjugated
Reactivity:	Human, Mouse, Rat

Antibody Data

Gene ID:	817 818
Uniprot:	AB_2861456
Host Species:	Rabbit
Purification:	Affinity purification
Observed MW:	60 kDa
Calculated MW:	73 kDa

Preparation & Storage

Storage: Store at -20°C. Avoid freeze / thaw cycles. Buffer: PBS containing 50% glycerol and 0.05% BSA, preserved with proclin300 or sodium azide (as specified on the Certificate of Analysis), pH 7.3.

Store Bradford Reagent at Room Temperature for 1 Year.

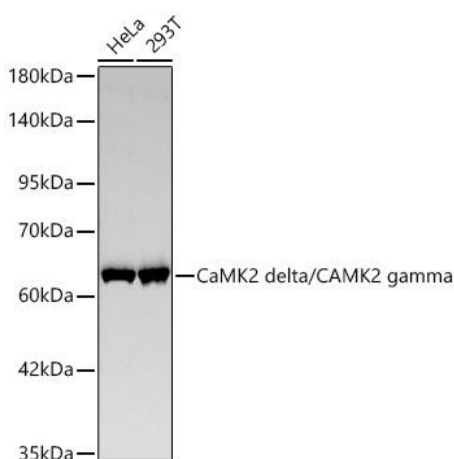
Positive Sample: HeLa, 293T

Recommended Dilutions:

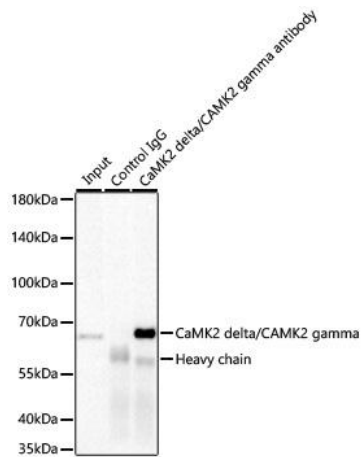
WB	1:5000 - 1:12000
IP	0.5µg-4µg antibody for 200µg-400µg extracts of whole cells
ELISA	Recommended starting concentration is 1 µg/mL. Please optimize the concentration based on your specific assay requirements.

Protein Quantification (Optional): To quantify total protein levels, use the Bradford Reagent included in this kit. Visit <https://www.assaygenie.com/bradford-protein-assay-protocol/> to view the full protocol

Validation Data



Western blot analysis of various lysates using CaMK2 delta/CAMK2 gamma Rabbit mAb (CAB0186) at 1:11000 dilution incubated overnight at 4°C. Secondary antibody: HRP-conjugated Goat anti-Rabbit IgG (H+L) (CABS014) at 1:10000 dilution. Lysates/proteins: 25 µg per lane. Blocking buffer: 3% nonfat dry milk in TBST. Detection: ECL Basic Kit (AbGn00020). Exposure time: 90s.



Immunoprecipitation of CaMK2 delta/CAMK2 gamma from 300 μ g extracts of 293T cells was performed using 2 μ g of CaMK2 delta/CAMK2 gamma Rabbit mAb (CAB0186). Rabbit IgG isotype control (CABC005) was used to precipitate the Control IgG sample. IP samples were eluted with 1X reducing Laemmli Buffer. The Input lane represents 10% of the total input. Western blot analysis of immunoprecipitates was conducted using CaMK2 delta/CAMK2 gamma Rabbit mAb (CAB0186) at a dilution of 1:10000.