

## c-Fos Antibody

CAB0236

### Description

---

This c-Fos Antibody is supplied as a kit for advanced applications. The kit includes Bradford Reagent to quantify total protein concentration for accurate sample normalization (Optional).

### Product Information

---

<b>SKU:</b>	CAB0236
<b>Contents:</b>	20 µL, 100 µL Bradford Reagent: 1 vial (2ml)
<b>Category:</b>	Polyclonal Antibody
<b>Synonyms:</b>	p55, AP-1, C-FOS, c-Fos
<b>Clone:</b>	-
<b>Applications:</b>	<span>WB</span> <span>IP</span> <span>ELISA</span>
<b>Conjugation:</b>	Unconjugated
<b>Reactivity:</b>	Human

### Antibody Data

---

<b>Gene ID:</b>	2353
<b>Uniprot:</b>	AB_2757049
<b>Host Species:</b>	Rabbit
<b>Purification:</b>	Affinity purification
<b>Observed MW:</b>	55-60 kDa
<b>Calculated MW:</b>	41 kDa

## Preparation & Storage

**Storage:** Store at -20°C. Avoid freeze / thaw cycles. Buffer: PBS containing 50% glycerol, preserved with proclin300 or sodium azide (as specified on the Certificate of Analysis), pH 7.3.

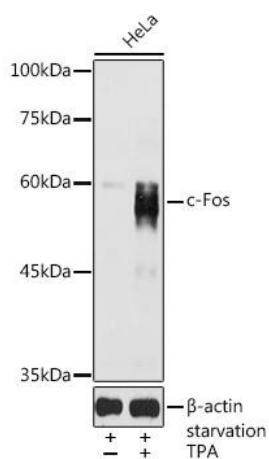
Store Bradford Reagent at Room Temperature for 1 Year.

**Positive Sample:** HeLa, HeLa treated with TPA, HeLa treated with TPA and starvation

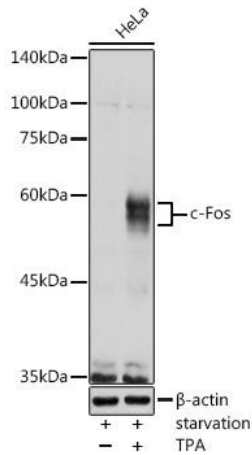
<b>Recommended Dilutions:</b>	<b>WB</b>	1:500 - 1:5000
	<b>IP</b>	0.5µg-4µg antibody for 200µg-400µg extracts of whole cells
	<b>ELISA</b>	Recommended starting concentration is 1 µg/mL. Please optimize the concentration based on your specific assay requirements.

**Protein Quantification (Optional):** To quantify total protein levels, use the Bradford Reagent included in this kit. Visit <https://www.assaygenie.com/bradford-protein-assay-protocol/> to view the full protocol

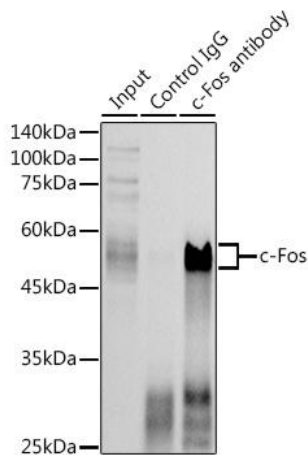
## Validation Data



Western blot analysis of lysates from HeLa cells, using c-Fos Rabbit pAb (CAB0236) at 1:1000 dilution. HeLa cells were treated with PMA/TPA (200 nM) at 37°C for 30 minutes after serum-starvation overnight. Secondary antibody: HRP-conjugated Goat anti-Rabbit IgG (H+L) (CABS014) at 1:10000 dilution. Lysates/proteins: 25µg per lane. Blocking buffer: 3% nonfat dry milk in TBST. Detection: ECL Basic Kit (AbGn00020). Exposure time: 30s.



Western blot analysis of lysates from HeLa cells, using c-Fos Rabbit pAb (CAB0236) at 1:1000 dilution. HeLa cells were treated with PMA/TPA (200 nM) at 37°C for 15 minutes after serum-starvation overnight. Secondary antibody: HRP-conjugated Goat anti-Rabbit IgG (H+L) (CABS014) at 1:10000 dilution. Lysates/proteins: 25µg per lane. Blocking buffer: 3% nonfat dry milk in TBST. Detection: ECL Basic Kit (AbGn00020). Exposure time: 1s.



Immunoprecipitation analysis of 300 µg extracts of HeLa cells using 3 µg c-Fos antibody (CAB0236). Western blot was performed from the immunoprecipitate using c-Fos antibody (CAB0236) at a dilution of 1:1000.