

[KO Validated] HDAC1 Antibody

CAB0238

Description

This [KO Validated] HDAC1 Antibody is supplied as a kit for advanced applications. The kit includes Bradford Reagent to quantify total protein concentration for accurate sample normalization (Optional).

Product Information

SKU:	CAB0238
Contents:	20 µL, 100 µL Bradford Reagent: 1 vial (2ml)
Category:	Polyclonal Antibody
Synonyms:	HD1, RPD3, KDAC1, GON-10, RPD3L1, C1
Clone:	-
Applications:	WB IHC-P IF/ICC IP ELISA
Conjugation:	Unconjugated
Reactivity:	Human, Mouse, Rat

Antibody Data

Gene ID:	3065
Uniprot:	AB_2757051
Host Species:	Rabbit
Purification:	Affinity purification
Observed MW:	62 kDa
Calculated MW:	55 kDa

Preparation & Storage

Storage: Store at -20°C. Avoid freeze / thaw cycles. Buffer: PBS containing 50% glycerol, preserved with proclin300 or sodium azide (as specified on the Certificate of Analysis), pH 7.3.

Store Bradford Reagent at Room Temperature for 1 Year.

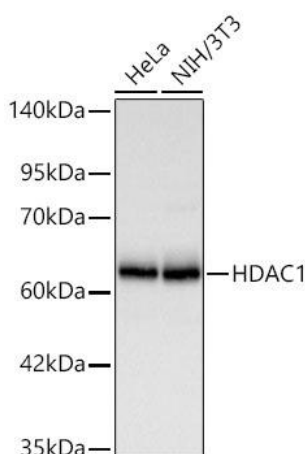
Positive Sample: 293T, HeLa, NIH/3T3, HT-29

Recommended Dilutions:

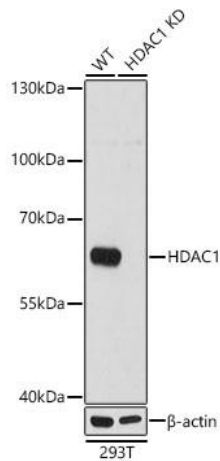
WB	1:500 - 1:5000
IP	0.5 µg - 4 µg antibody for 200 µg-400 µg extracts of whole cells
IF/ICC	1:50 - 1:200
IHC-P	1:50 - 1:200
ELISA	Recommended starting concentration is 1 µg/mL. Please optimize the concentration based on your specific assay requirements.

Protein Quantification (Optional): To quantify total protein levels, use the Bradford Reagent included in this kit. Visit <https://www.assaygenie.com/bradford-protein-assay-protocol/> to view the full protocol

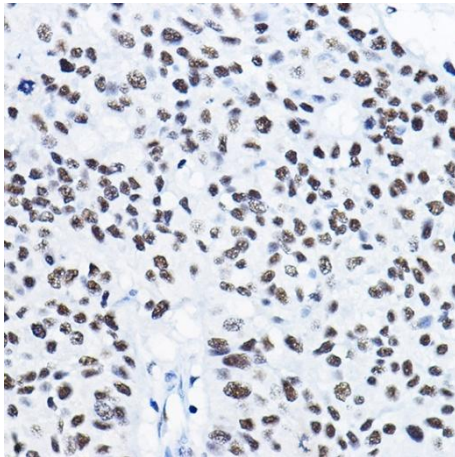
Validation Data



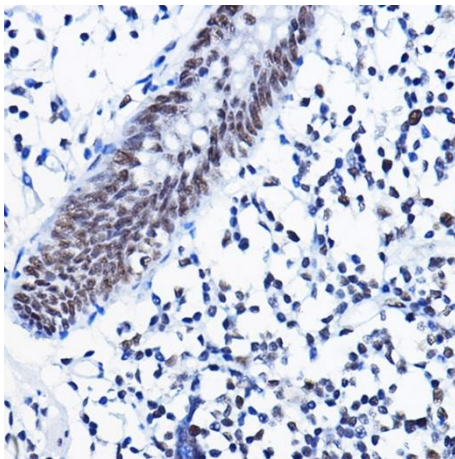
Western blot analysis of various lysates using [KD Validated] HDAC1 Rabbit pAb (CAB0238) at 1:2000 dilution incubated at room temperature for 1.5 hours. Secondary antibody: HRP-conjugated Goat anti-Rabbit IgG (H+L) (CABS014) at 1:10000 dilution. Lysates/proteins: 25 µg per lane. Blocking buffer: 3% nonfat dry milk in TBST. Detection: ECL Basic Kit (AbGn00020) Exposure time: 20 s.



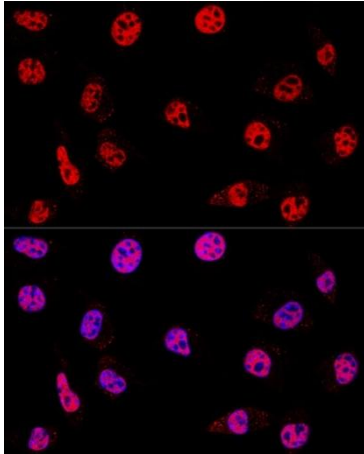
Western blot analysis of lysates from wild type (WT) and HDAC1 knockdown (KD) 293T cells, using [KD Validated] HDAC1 Rabbit pAb (CAB0238) at 1:1000 dilution. Secondary antibody: HRP-conjugated Goat anti-Rabbit IgG (H+L) (CABS014) at 1:10000 dilution. Lysates/proteins: 25µg per lane. Blocking buffer: 3% nonfat dry milk in TBST. Detection: ECL Basic Kit (AbGn00020). Exposure time: 1s.



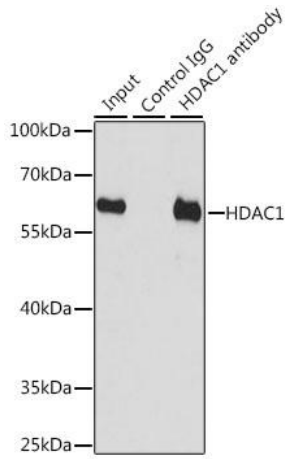
Immunohistochemistry analysis of paraffin-embedded Human lung cancer using [KD Validated] HDAC1 Rabbit pAb (CAB0238) at dilution of 1:50 (40x lens). High pressure antigen retrieval performed with 0.01M Citrate buffer (pH 6.0) prior to IHC staining.



Immunohistochemistry analysis of paraffin-embedded Human colon using [KD Validated] HDAC1 Rabbit pAb (CAB0238) at dilution of 1:50 (40x lens). High pressure antigen retrieval performed with 0.01M Citrate buffer (pH 6.0) prior to IHC staining.



Confocal immunofluorescence analysis of cells using [KD Validated] HDAC1 Rabbit pAb (CAB0238) at dilution of 1:200. Blue: DAPI for nuclear staining.



Immunoprecipitation analysis of 200 μ g extracts of HT-29 cells, using 3 μ g [KD Validated] HDAC1 Rabbit pAb (CAB0238). Western blot was performed from the immunoprecipitate using HDAC1 antibody (CAB0238) at a dilution of 1:1000.