

VCAM1 Antibody

CAB0279

Description

This VCAM1 Antibody is supplied as a kit for advanced applications. The kit includes Bradford Reagent to quantify total protein concentration for accurate sample normalization (Optional).

Product Information

SKU:	CAB0279
Contents:	20 µL, 100 µL Bradford Reagent: 1 vial (2ml)
Category:	Polyclonal Antibody
Synonyms:	CD106, INCAM-100, VCAM1
Clone:	-
Applications:	WB ELISA IF-P
Conjugation:	Unconjugated
Reactivity:	Human, Mouse

Antibody Data

Gene ID:	7412
Uniprot:	AB_2757091
Host Species:	Rabbit
Purification:	Affinity purification
Observed MW:	95-120kDa
Calculated MW:	81kDa

Preparation & Storage

Storage: Store at -20°C. Avoid freeze / thaw cycles. Buffer: PBS containing 50% glycerol, preserved with proclin300 or sodium azide (as specified on the Certificate of Analysis), pH 7.3.

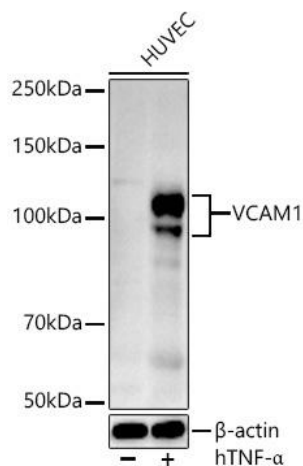
Store Bradford Reagent at Room Temperature for 1 Year.

Positive Sample: HUVEC treated with hTNF- α , Mouse liver

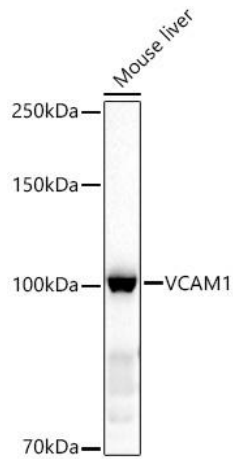
Recommended Dilutions:	WB	1:500 - 1:1000
	IF-P	1:50 - 1:200
	ELISA	Recommended starting concentration is 1 μ g/mL. Please optimize the concentration based on your specific assay requirements.

Protein Quantification (Optional): To quantify total protein levels, use the Bradford Reagent included in this kit. Visit <https://www.assaygenie.com/bradford-protein-assay-protocol/> to view the full protocol

Validation Data



Western blot analysis of lysates from HUVEC cells, using VCAM1 Rabbit pAb (CAB0279) at 1:500 dilution. HUVEC cells were treated with Human Tumor Necrosis Factor- α (hTNF- α) (10 ng/ml) for 16 hours. Secondary antibody: HRP-conjugated Goat anti-Rabbit IgG (H+L) (CABS014) at 1:10000 dilution. Lysates/proteins: 25 μ g per lane. Blocking buffer: 3% nonfat dry milk in TBST. Detection: ECL Basic Kit (AbGn00020). Exposure time: 90s.



Western blot analysis of lysates from Mouse liver, using VCAM1 Rabbit pAb (CAB0279) at 1:1000 dilution. Secondary antibody: HRP-conjugated Goat anti-Rabbit IgG (H+L) (CABS014) at 1:10000 dilution. Lysates/proteins: 25µg per lane. Blocking buffer: 3% nonfat dry milk in TBST. Detection: ECL Basic Kit (AbGn00020). Exposure time: 30s.