

Hsp90alpha Antibody

CAB0365

Description

This Hsp90alpha Antibody is supplied as a kit for advanced applications. The kit includes Bradford Reagent to quantify total protein concentration for accurate sample normalization (Optional).

Product Information

| | |
|----------------------|---|
| SKU: | CAB0365 |
| Contents: | 20 μ L, 100 μ L Bradford Reagent: 1 vial (2ml) |
| Category: | Polyclonal Antibody |
| Synonyms: | EL52, HSPN, LAP2, HSP86, HSPC1, HSPCA, Hsp89, Hsp90, LAP-2, HSP89A, HSP90A, HSP90N, Hsp103, HSPCAL1, HSPCAL4, HEL-S-65p, Hsp90 α |
| Clone: | - |
| Applications: | WB IF/ICC ELISA |
| Conjugation: | Unconjugated |
| Reactivity: | Human, Mouse, Rat |

Antibody Data

| | |
|-----------------------|-----------------------|
| Gene ID: | 3320 |
| Uniprot: | AB_2757150 |
| Host Species: | Rabbit |
| Purification: | Affinity purification |
| Observed MW: | 90kDa |
| Calculated MW: | 85kDa |

Preparation & Storage

Storage: Store at -20°C. Avoid freeze / thaw cycles. Buffer: PBS containing 50% glycerol, preserved with proclin300 or sodium azide (as specified on the Certificate of Analysis), pH 7.3.

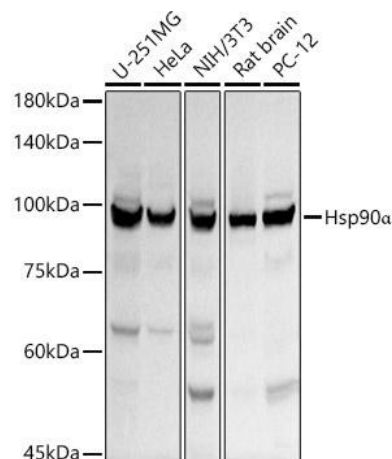
Store Bradford Reagent at Room Temperature for 1 Year.

Positive Sample: U-251MG, HeLa, NIH/3T3, Rat brain, PC-12

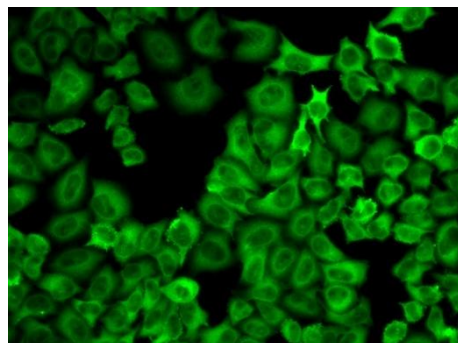
| | | |
|-------------------------------|---------------|---|
| Recommended Dilutions: | WB | 1:500 - 1:1000 |
| | IF/ICC | 1:100 - 1:500 |
| | ELISA | Recommended starting concentration is 1 µg/mL. Please optimize the concentration based on your specific assay requirements. |

Protein Quantification (Optional): To quantify total protein levels, use the Bradford Reagent included in this kit. Visit <https://www.assaygenie.com/bradford-protein-assay-protocol/> to view the full protocol

Validation Data



Western blot analysis of various lysates using Hsp90α Rabbit pAb (CAB0365) at 1:1000 dilution. Secondary antibody: HRP-conjugated Goat anti-Rabbit IgG (H+L) (CABS014) at 1:10000 dilution. Lysates/proteins: 25µg per lane. Blocking buffer: 3% nonfat dry milk in TBST. Detection: ECL Basic Kit (AbGn00020). Exposure time: 3s.



Immunofluorescence analysis of U2OS cells using Hsp90α Rabbit pAb (CAB0365). Secondary antibody: Cy3-conjugated Goat anti-Rabbit IgG (H+L) (CABS007) at 1:500 dilution.