

## Integrin alpha 4 (ITGA4/CD49d) Antibody

CAB0696

### Description

---

This Integrin alpha 4 (ITGA4/CD49d) Antibody is supplied as a kit for advanced applications. The kit includes Bradford Reagent to quantify total protein concentration for accurate sample normalization (Optional).

### Product Information

---

|                      |                                                 |
|----------------------|-------------------------------------------------|
| <b>SKU:</b>          | CAB0696                                         |
| <b>Contents:</b>     | 20 µL, 100 µL<br>Bradford Reagent: 1 vial (2ml) |
| <b>Category:</b>     | Polyclonal Antibody                             |
| <b>Synonyms:</b>     | IA4, CD49D, Integrin alpha 4 (ITGA4/CD49d)      |
| <b>Clone:</b>        | -                                               |
| <b>Applications:</b> | <span>WB</span> <span>ELISA</span>              |
| <b>Conjugation:</b>  | Unconjugated                                    |
| <b>Reactivity:</b>   | Human                                           |

### Antibody Data

---

|                       |                       |
|-----------------------|-----------------------|
| <b>Gene ID:</b>       | 3676                  |
| <b>Uniprot:</b>       | AB_2757347            |
| <b>Host Species:</b>  | Rabbit                |
| <b>Purification:</b>  | Affinity purification |
| <b>Observed MW:</b>   | 70kDa/140kDa/150kDa   |
| <b>Calculated MW:</b> | 115kDa                |

## Preparation & Storage

**Storage:** Store at -20°C. Avoid freeze / thaw cycles. Buffer: PBS containing 50% glycerol, preserved with proclin300 or sodium azide (as specified on the Certificate of Analysis), pH 7.3.

Store Bradford Reagent at Room Temperature for 1 Year.

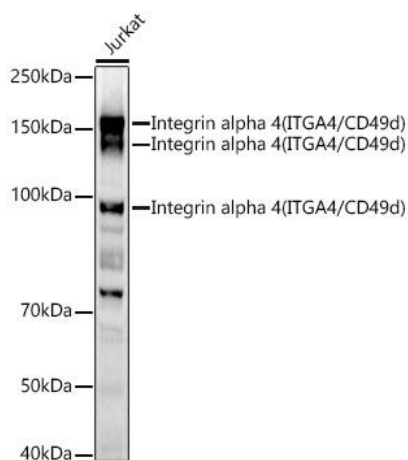
**Positive Sample:** Jurkat

**Recommended Dilutions:**

|              |                                                                                                                             |
|--------------|-----------------------------------------------------------------------------------------------------------------------------|
| <b>WB</b>    | 1:500 - 1:1000                                                                                                              |
| <b>ELISA</b> | Recommended starting concentration is 1 µg/mL. Please optimize the concentration based on your specific assay requirements. |

**Protein Quantification (Optional):** To quantify total protein levels, use the Bradford Reagent included in this kit. Visit <https://www.assaygenie.com/bradford-protein-assay-protocol/> to view the full protocol

## Validation Data



Western blot analysis of lysates from Jurkat cells, using Integrin alpha 4 (ITGA4/CD49d) Rabbit pAb (CAB0696) at 1:1000 dilution. Secondary antibody: HRP-conjugated Goat anti-Rabbit IgG (H+L) (CABS014) at 1:10000 dilution. Lysates/proteins: 25µg per lane. Blocking buffer: 3% nonfat dry milk in TBST. Detection: ECL Basic Kit (AbGn00020). Exposure time: 180s.