

HES1 Monoclonal Antibody

CAB0925

Description

This HES1 Monoclonal Antibody is supplied as a kit for advanced applications. The kit includes Bradford Reagent to quantify total protein concentration for accurate sample normalization (Optional).

Product Information

SKU:	CAB0925
Contents:	20 µL, 100 µL Bradford Reagent: 1 vial (2ml)
Category:	Monoclonal Antibody
Synonyms:	HHL, HRY, HES-1, bHLHb39, HES1
Clone:	ARC0513
Applications:	WB IHC-P IP ELISA
Conjugation:	Unconjugated
Reactivity:	Human, Mouse, Rat

Antibody Data

Gene ID:	3280
Uniprot:	AB_2861486
Host Species:	Rabbit
Purification:	Affinity purification
Observed MW:	30kDa
Calculated MW:	30kDa

Preparation & Storage

Storage: Store at -20°C. Avoid freeze / thaw cycles. Buffer: PBS containing 50% glycerol and 0.05% BSA, preserved with proclin300 or sodium azide (as specified on the Certificate of Analysis), pH 7.3.

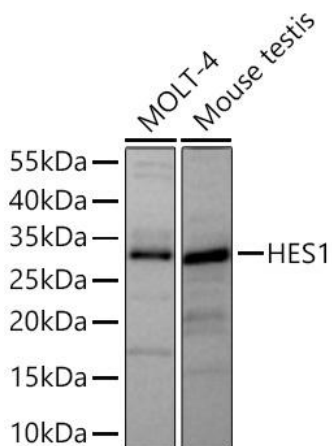
Store Bradford Reagent at Room Temperature for 1 Year.

Positive Sample: MOLT-4, Mouse testis

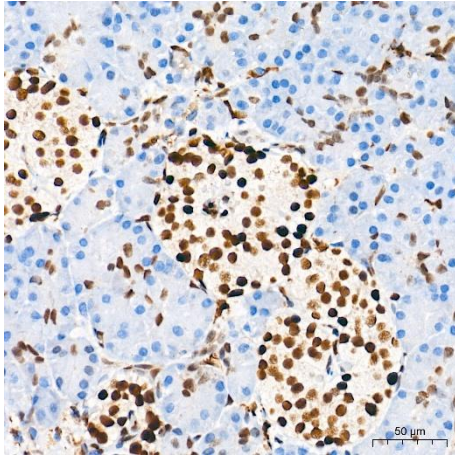
Recommended Dilutions:	WB	1:1000 - 1:2000
	IHC-P	1:1000 - 1:4000
	IP	0.5µg-4µg antibody for 400µg-600µg extracts of whole cells
	ELISA	Recommended starting concentration is 1 µg/mL. Please optimize the concentration based on your specific assay requirements.

Protein Quantification (Optional): To quantify total protein levels, use the Bradford Reagent included in this kit. Visit <https://www.assaygenie.com/bradford-protein-assay-protocol/> to view the full protocol

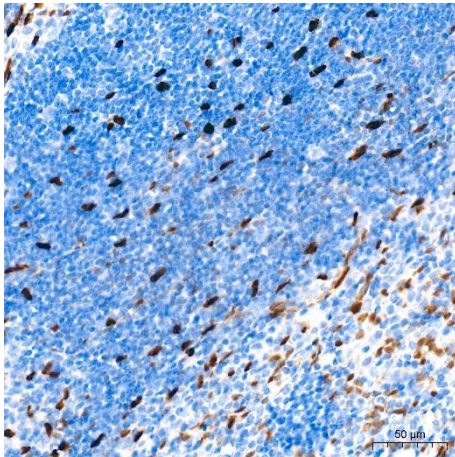
Validation Data



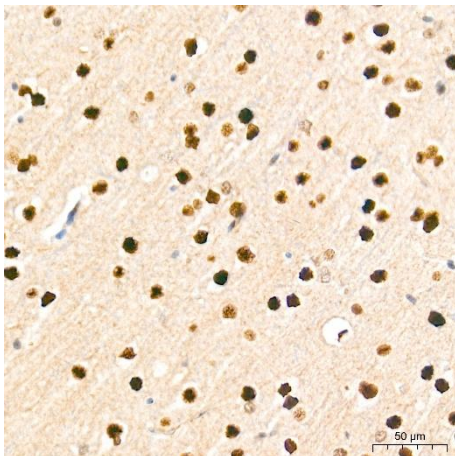
Western blot analysis of various lysates using Rabbit mAb (CAB0925) at 1:1000 dilution incubated overnight at 4°C. Secondary antibody: HRP-conjugated Goat anti-Rabbit IgG (H+L) (CABS014) at 1:10000 dilution. Lysates/proteins: 25 µg per lane. Blocking buffer: 3% nonfat dry milk in TBST. Detection: ECL Basic Kit (AbGn00020). Exposure time: 45s.



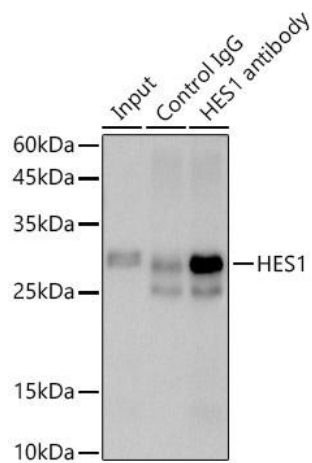
Immunohistochemistry analysis of paraffin-embedded Human pancreas tissue using Rabbit mAb (CAB0925) at a dilution of 1:2000 (40x lens). High pressure antigen retrieval performed with 0.01M Tris-EDTA Buffer (pH 9.0) prior to IHC staining.



Immunohistochemistry analysis of paraffin-embedded Mouse spleen tissue using Rabbit mAb (CAB0925) at a dilution of 1:2000 (40x lens). High pressure antigen retrieval performed with 0.01M Tris-EDTA Buffer (pH 9.0) prior to IHC staining.



Immunohistochemistry analysis of paraffin-embedded Rat brain tissue using Rabbit mAb (CAB0925) at a dilution of 1:2000 (40x lens). High pressure antigen retrieval performed with 0.01M Tris-EDTA Buffer (pH 9.0) prior to IHC staining.



Immunoprecipitation analysis of 600 µg extracts of Rat testis cells using 3 µg antibody (CAB0925). Western blot was performed from the immunoprecipitate using antibody (CAB0925) at a dilution of 1:500.