

CYFIP1 Antibody

CAB10291

Description

This CYFIP1 Antibody is supplied as a kit for advanced applications. The kit includes Bradford Reagent to quantify total protein concentration for accurate sample normalization (Optional).

Product Information

SKU:	CAB10291
Contents:	20 μ L, 100 μ L Bradford Reagent: 1 vial (2ml)
Category:	Polyclonal Antibody
Synonyms:	SHYC, SRA1, SRA-1, P140SRA-1, CYFIP1
Clone:	-
Applications:	WB IP ELISA
Conjugation:	Unconjugated
Reactivity:	Human, Mouse

Antibody Data

Gene ID:	23191
Uniprot:	AB_2757834
Host Species:	Rabbit
Purification:	Affinity purification
Observed MW:	145kDa
Calculated MW:	145kDa

Preparation & Storage

Storage: Store at -20°C. Avoid freeze / thaw cycles. Buffer: PBS containing 50% glycerol, preserved with proclin300 or sodium azide (as specified on the Certificate of Analysis), pH 7.3.

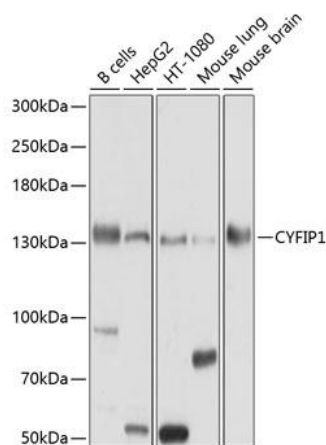
Store Bradford Reagent at Room Temperature for 1 Year.

Positive Sample: B cells, BT-474, HepG2, HT-1080, Mouse lung, Mouse brain

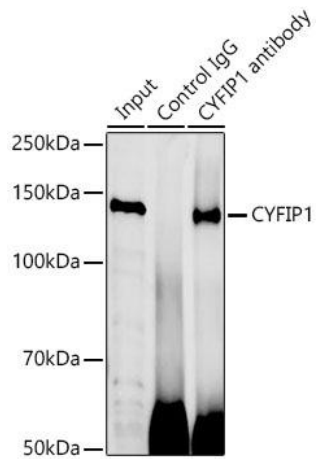
Recommended Dilutions:	WB	1:1000 - 1:2000
	IP	0.5µg-4µg antibody for 200µg-400µg extracts of whole cells
	ELISA	Recommended starting concentration is 1 µg/mL. Please optimize the concentration based on your specific assay requirements.

Protein Quantification (Optional): To quantify total protein levels, use the Bradford Reagent included in this kit. Visit <https://www.assaygenie.com/bradford-protein-assay-protocol/> to view the full protocol

Validation Data



Western blot analysis of various lysates using CYFIP1 Rabbit pAb (CAB10291) at 1:1000 dilution. Secondary antibody: HRP-conjugated Goat anti-Rabbit IgG (H+L) (CABS014) at 1:10000 dilution. Lysates/proteins: 25µg per lane. Blocking buffer: 3% nonfat dry milk in TBST. Detection: ECL Basic Kit (AbGn00020). Exposure time: 10s.



Immunoprecipitation analysis of 300 μ g extracts of BT-474 cells using 3 μ g CYFIP1 antibody (CAB10291). Western blot was performed from the immunoprecipitate using CYFIP1 antibody (CAB10291) at a dilution of 1:500.