

EpCAM Monoclonal Antibody

CAB1107

Description

This EpCAM Monoclonal Antibody is supplied as a kit for advanced applications. The kit includes Bradford Reagent to quantify total protein concentration for accurate sample normalization (Optional).

Product Information

| | |
|----------------------|---|
| SKU: | CAB1107 |
| Contents: | 20 μ L, 100 μ L Bradford Reagent: 1 vial (2ml) |
| Category: | Monoclonal Antibody |
| Synonyms: | ESA, KSA, M4S1, MK-1, DIAR5, EGP-2, EGP40, KS1/4, MIC18, TROP1, BerEp4, EGP314, HNPCC8, LYNCH8, MOC-31, Ber-Ep4, TACSTD1, EpCAM |
| Clone: | ARC0521 |
| Applications: | WB IHC-P ELISA |
| Conjugation: | Unconjugated |
| Reactivity: | Human, Mouse, Rat |

Antibody Data

| | |
|-----------------------|-----------------------|
| Gene ID: | 4072 |
| Uniprot: | AB_2861499 |
| Host Species: | Rabbit |
| Purification: | Affinity purification |
| Observed MW: | 40kDa |
| Calculated MW: | 35kDa |

Preparation & Storage

Storage: Store at -20°C. Avoid freeze / thaw cycles. Buffer: PBS containing 50% glycerol and 0.05% BSA, preserved with proclin300 or sodium azide (as specified on the Certificate of Analysis), pH 7.3.

Store Bradford Reagent at Room Temperature for 1 Year.

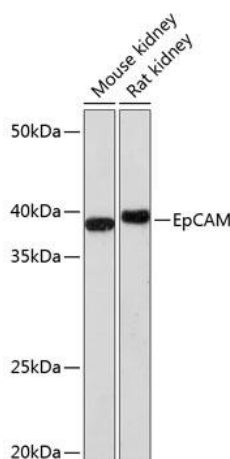
Positive Sample: Mouse kidney, Rat kidney

Recommended Dilutions:

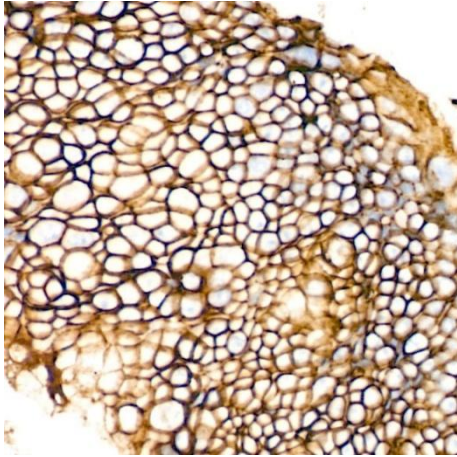
| | |
|--------------|---|
| WB | 1:1000 - 1:2000 |
| IHC-P | 1:100 - 1:800 |
| ELISA | Recommended starting concentration is 1 µg/mL. Please optimize the concentration based on your specific assay requirements. |

Protein Quantification (Optional): To quantify total protein levels, use the Bradford Reagent included in this kit. Visit <https://www.assaygenie.com/bradford-protein-assay-protocol/> to view the full protocol

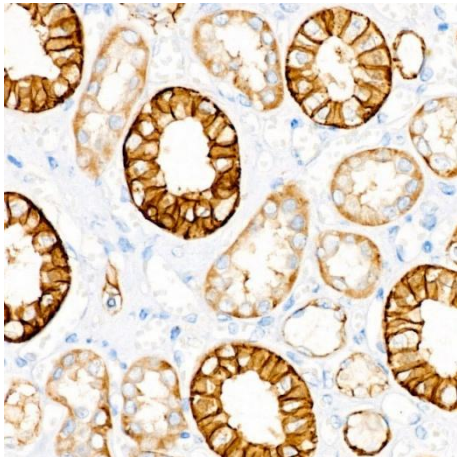
Validation Data



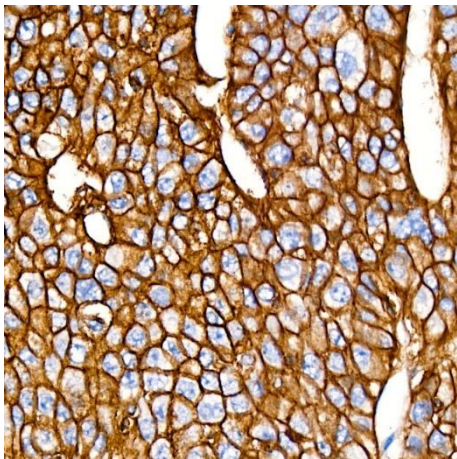
Western blot analysis of various lysates using EpCAM Rabbit mAb (CAB1107) at 1 : 1000 dilution. Secondary antibody: HRP-conjugated Goat anti-Rabbit IgG (H+L) (CABS014) at 1:10000 dilution. Lysates/proteins: 25µg per lane. Blocking buffer: 3% nonfat dry milk in TBST. Detection: ECL Enhanced Kit (AbGn00021). Exposure time: 3min.



Immunohistochemistry analysis of paraffin-embedded Human colon carcinoma tissue using EpCAM Rabbit mAb (CAB1107) at dilution of 1:100 (40x lens). Microwave antigen retrieval performed with 0.01M PBS Buffer (pH 7.2) prior to IHC staining.



Immunohistochemistry analysis of paraffin-embedded Human kidney tissue using EpCAM Rabbit mAb (CAB1107) at dilution of 1:100 (40x lens). Microwave antigen retrieval performed with 0.01M PBS Buffer (pH 7.2) prior to IHC staining.



Immunohistochemistry analysis of paraffin-embedded Human liver cancer tissue using EpCAM Rabbit mAb (CAB1107) at dilution of 1:100 (40x lens). Microwave antigen retrieval performed with 0.01M PBS Buffer (pH 7.2) prior to IHC staining.