

[KO Validated] CDK4 Monoclonal Antibody

CAB11136

Description

This [KO Validated] CDK4 Monoclonal Antibody is supplied as a kit for advanced applications. The kit includes Bradford Reagent to quantify total protein concentration for accurate sample normalization (Optional).

Product Information

SKU:	CAB11136
Contents:	20 µL, 100 µL Bradford Reagent: 1 vial (2ml)
Category:	Monoclonal Antibody
Synonyms:	CMM3, PSK-J3, K4
Clone:	ARC51004
Applications:	WB IHC-P IP ELISA
Conjugation:	Unconjugated
Reactivity:	Human, Mouse, Rat, Monkey

Antibody Data

Gene ID:	1019
Uniprot:	AB_2861505
Host Species:	Rabbit
Purification:	Affinity purification
Observed MW:	34kDa
Calculated MW:	34kDa

Preparation & Storage

Storage: Store at -20°C. Avoid freeze / thaw cycles. Buffer: PBS containing 50% glycerol and 0.05% BSA, preserved with proclin300 or sodium azide (as specified on the Certificate of Analysis), pH 7.3.

Store Bradford Reagent at Room Temperature for 1 Year.

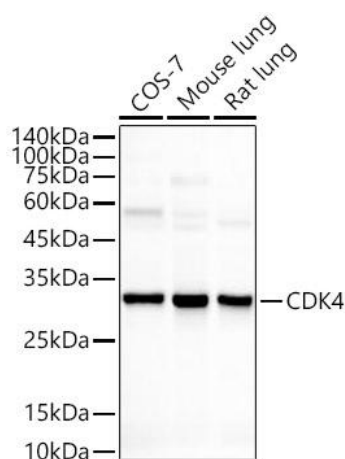
Positive Sample: HeLa, COS-7, Mouse lung, Rat lung, NIH/3T3

Recommended Dilutions:

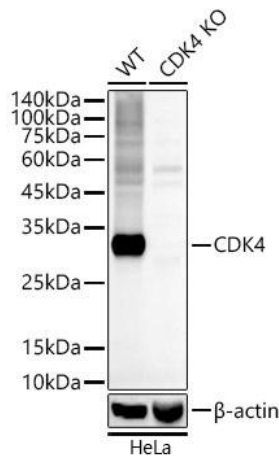
WB	1:1000 - 1:6000
IP	0.5µg-4µg antibody for 200µg-400µg extracts of whole cells
IHC-P	1:200 - 1:2000
ELISA	Recommended starting concentration is 1 µg/mL. Please optimize the concentration based on your specific assay requirements. For high-ratio antibody dilutions ($\geq 1:10000$), a sequential dilution method is strongly recommended to ensure measurement accuracy.

Protein Quantification (Optional): To quantify total protein levels, use the Bradford Reagent included in this kit. Visit <https://www.assaygenie.com/bradford-protein-assay-protocol/> to view the full protocol

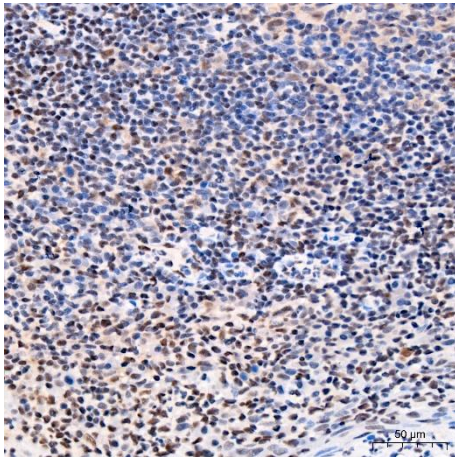
Validation Data



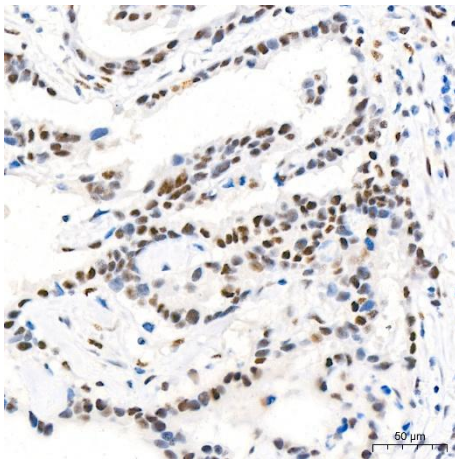
Western blot analysis of various lysates, using [KO Validated] Rabbit mAb (CAB11136) at 1:1000 dilution. Secondary antibody: HRP-conjugated Goat anti-Rabbit IgG (H+L) (CABS014) at 1:10000 dilution. Lysates/proteins: 25µg per lane. Blocking buffer: 3% nonfat dry milk in TBST. Detection: ECL Basic Kit (AbGn00020). Exposure time: 10s.



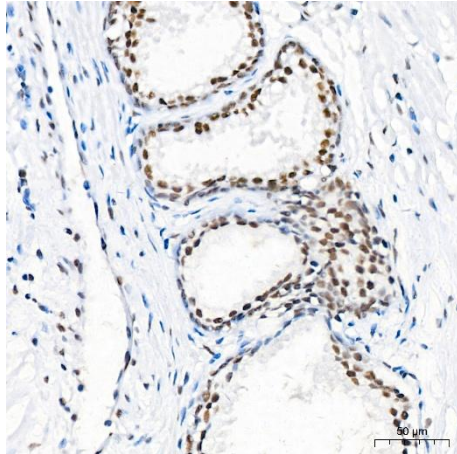
Western blot analysis of lysates from wild type (WT) and knockout (KO) HeLa cells, using [KO Validated] Rabbit mAb (CAB11136) at 1:1000 dilution. Secondary antibody: HRP-conjugated Goat anti-Rabbit IgG (H+L) (CABS014) at 1:10000 dilution. Lysates/proteins: 25µg per lane. Blocking buffer: 3% nonfat dry milk in TBST. Detection: ECL Basic Kit (AbGn00020). Exposure time: 10s.



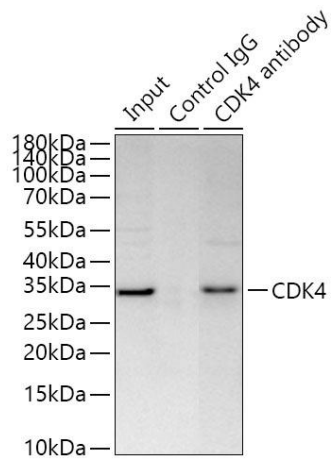
Immunohistochemistry analysis of paraffin-embedded Human tonsil tissue using [KO Validated] Rabbit mAb (CAB11136) at a dilution of 1:500 (40x lens). High pressure antigen retrieval performed with 0.01M Citrate buffer (pH 6.0) prior to IHC staining.



Immunohistochemistry analysis of paraffin-embedded Human breast cancer tissue using [KO Validated] Rabbit mAb (CAB11136) at a dilution of 1:500 (40x lens). High pressure antigen retrieval performed with 0.01M Citrate buffer (pH 6.0) prior to IHC staining.



Immunohistochemistry analysis of paraffin-embedded Human prostate tissue using [KO Validated] Rabbit mAb (CAB11136) at a dilution of 1:500 (40x lens). High pressure antigen retrieval performed with 0.01M Citrate buffer (pH 6.0) prior to IHC staining.



Immunoprecipitation of from 300 μg extracts of HeLa was performed using 0.5 μg of [KO Validated] Rabbit mAb (CAB11136). Rabbit IgG isotype control (CABC005) was used to precipitate the Control IgG sample. IP samples were eluted with 1X reducing Laemmli Buffer. The Input lane represents 10% of the total input. Western blot analysis of immunoprecipitates was conducted using [KO Validated] Rabbit mAb (CAB11136) at a dilution of 1:1000.