

Dot1L/KMT4 Antibody

CAB11285

Description

This Dot1L/KMT4 Antibody is supplied as a kit for advanced applications. The kit includes Bradford Reagent to quantify total protein concentration for accurate sample normalization (Optional).

Product Information

SKU:	CAB11285
Contents:	20 µL, 100 µL Bradford Reagent: 1 vial (2ml)
Category:	Polyclonal Antibody
Synonyms:	DOT1, KMT4, Dot1L/KMT4
Clone:	-
Applications:	WB ELISA
Conjugation:	Unconjugated
Reactivity:	Rat, Mouse

Antibody Data

Gene ID:	84444
Uniprot:	AB_2758492
Host Species:	Rabbit
Purification:	Affinity purification
Observed MW:	185kDa
Calculated MW:	165kDa

Preparation & Storage

Storage: Store at -20°C. Avoid freeze / thaw cycles. Buffer: PBS containing 50% glycerol, preserved with proclin300 or sodium azide (as specified on the Certificate of Analysis), pH 7.3.

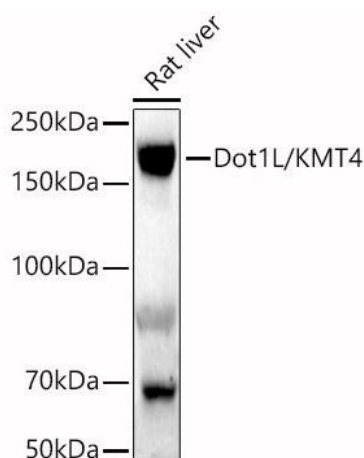
Store Bradford Reagent at Room Temperature for 1 Year.

Positive Sample: Rat liver

Recommended Dilutions:	WB	1:100 - 1:500
	ELISA	Recommended starting concentration is 1 µg/mL. Please optimize the concentration based on your specific assay requirements.

Protein Quantification (Optional): To quantify total protein levels, use the Bradford Reagent included in this kit. Visit <https://www.assaygenie.com/bradford-protein-assay-protocol/> to view the full protocol

Validation Data



Western blot analysis of lysates from Rat liver, using Dot1L/ Rabbit pAb (CAB11285) at 1:400 dilution. Secondary antibody: HRP-conjugated Goat anti-Rabbit IgG (H+L) (CABS014) at 1:10000 dilution. Lysates/proteins: 25µg per lane. Blocking buffer: 3% nonfat dry milk in TBST. Detection: ECL Enhanced Kit (AbGn00021). Exposure time: 180s.