

AMACR Antibody

CAB1130

Description

This AMACR Antibody is supplied as a kit for advanced applications. The kit includes Bradford Reagent to quantify total protein concentration for accurate sample normalization (Optional).

Product Information

| | |
|----------------------|---|
| SKU: | CAB1130 |
| Contents: | 20 µL, 100 µL Bradford Reagent: 1 vial (2ml) |
| Category: | Polyclonal Antibody |
| Synonyms: | RM, RACE, CBAS4, P504S, AMACRD, AMACR |
| Clone: | - |
| Applications: | WB IHC-P ELISA IF-P |
| Conjugation: | Unconjugated |
| Reactivity: | Human, Mouse, Rat |

Antibody Data

| | |
|-----------------------|-----------------------|
| Gene ID: | 23600 |
| Uniprot: | AB_2758498 |
| Host Species: | Rabbit |
| Purification: | Affinity purification |
| Observed MW: | 42kDa/43kDa |
| Calculated MW: | 42kDa |

Preparation & Storage

Storage: Store at -20°C. Avoid freeze / thaw cycles. Buffer: PBS with 0.01% thimerosal, 50% glycerol, pH 7.3.

Store Bradford Reagent at Room Temperature for 1 Year.

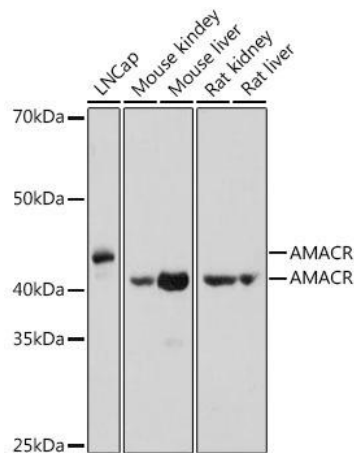
Positive Sample: LNCap, Mouse kidney, Mouse liver, Rat kidney, Rat liver

Recommended Dilutions:

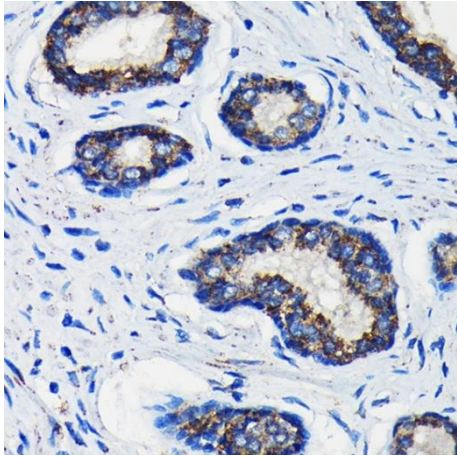
| | |
|--------------|---|
| WB | 1:500 - 1:2000 |
| IF-P | 1:50 - 1:200 |
| IHC-P | 1:50 - 1:200 |
| ELISA | Recommended starting concentration is 1 µg/mL. Please optimize the concentration based on your specific assay requirements. |

Protein Quantification (Optional): To quantify total protein levels, use the Bradford Reagent included in this kit. Visit <https://www.assaygenie.com/bradford-protein-assay-protocol/> to view the full protocol

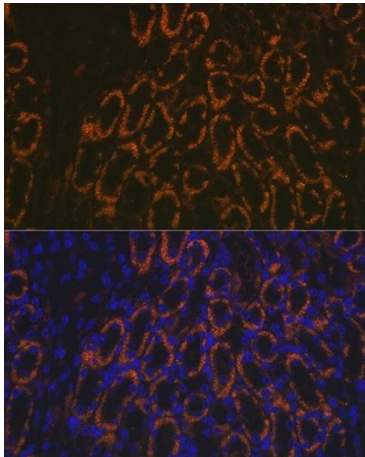
Validation Data



Western blot analysis of various lysates using AMACR Rabbit pAb (CAB1130) at 1:1000 dilution. Secondary antibody: HRP-conjugated Goat anti-Rabbit IgG (H+L) (CABS014) at 1:10000 dilution. Lysates/proteins: 25µg per lane. Blocking buffer: 3% nonfat dry milk in TBST. Detection: ECL Basic Kit (AbGn00020). Exposure time: 1s.



Immunohistochemistry analysis of paraffin-embedded Human prostate cancer using AMACR Rabbit pAb (CAB1130) at dilution of 1:100 (40x lens). Microwave antigen retrieval performed with 0.01M Tris/EDTA Buffer (pH 9.0) prior to IHC staining.



Immunofluorescence analysis of paraffin-embedded mouse kidney using AMACR Rabbit pAb (CAB1130) at dilution of 1:100 (40x lens). Secondary antibody: Cy3-conjugated Goat anti-Rabbit IgG (H+L) (CABS007) at 1:500 dilution. Blue: DAPI for nuclear staining.