

MCM7 Monoclonal Antibody

CAB11325

Description

This MCM7 Monoclonal Antibody is supplied as a kit for advanced applications. The kit includes Bradford Reagent to quantify total protein concentration for accurate sample normalization (Optional).

Product Information

| | |
|----------------------|--|
| SKU: | CAB11325 |
| Contents: | 20 µL, 100 µL Bradford Reagent: 1 vial (2ml) |
| Category: | Monoclonal Antibody |
| Synonyms: | MCM2, CDC47, P85MCM, P1CDC47, PNAS146, PPP1R104, P1.1-MCM3, MCM7 |
| Clone: | ARC0573 |
| Applications: | WB IF/ICC IP ELISA |
| Conjugation: | Unconjugated |
| Reactivity: | Human |

Antibody Data

| | |
|-----------------------|-----------------------|
| Gene ID: | 4176 |
| Uniprot: | AB_2861545 |
| Host Species: | Rabbit |
| Purification: | Affinity purification |
| Observed MW: | 81kDa |
| Calculated MW: | 81kDa |

Preparation & Storage

Storage: Store at -20°C. Avoid freeze / thaw cycles. Buffer: PBS containing 50% glycerol and 0.05% BSA, preserved with proclin300 or sodium azide (as specified on the Certificate of Analysis), pH 7.3.

Store Bradford Reagent at Room Temperature for 1 Year.

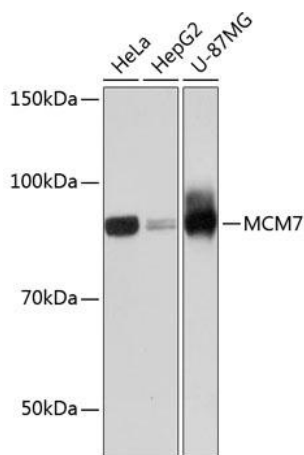
Positive Sample: HeLa, Hep G2, U-87MG

Recommended Dilutions:

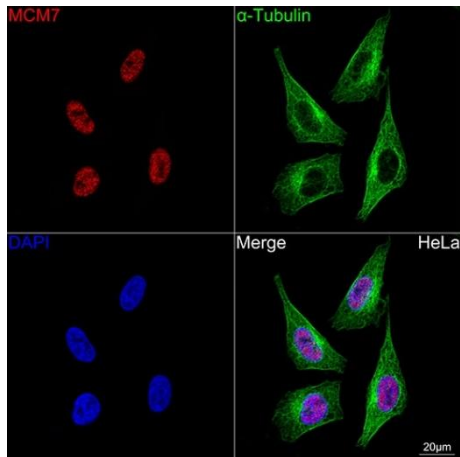
| | |
|---------------|---|
| WB | 1:500 - 1:1000 |
| IF/ICC | 1:50 - 1:200 |
| IP | 0.5µg-4µg antibody for 200µg-400µg extracts of whole cells |
| ELISA | Recommended starting concentration is 1 µg/mL. Please optimize the concentration based on your specific assay requirements. |

Protein Quantification (Optional): To quantify total protein levels, use the Bradford Reagent included in this kit. Visit <https://www.assaygenie.com/bradford-protein-assay-protocol/> to view the full protocol

Validation Data



Western blot analysis of various lysates using Rabbit mAb (CAB11325) at 1:1000 dilution. Secondary antibody: HRP-conjugated Goat anti-Rabbit IgG (H+L) (CABS014) at 1:10000 dilution. Lysates/proteins: 25µg per lane. Blocking buffer: 3% nonfat dry milk in TBST. Detection: ECL Basic Kit (AbGn00020). Exposure time: 60s.



Confocal imaging of HeLa cells using Rabbit mAb (CAB11325, at dilution of 1:100) (Red). The cells were counterstained with α -Tubulin Mouse mAb (CABC012, dilution 1:400) (Green). DAPI was used for nuclear staining (blue). Objective: 100x.