

PLSCR3 Antibody

CAB12371

Description

This PLSCR3 Antibody is supplied as a kit for advanced applications. The kit includes Bradford Reagent to quantify total protein concentration for accurate sample normalization (Optional).

Product Information

SKU:	CAB12371
Contents:	20 μ L, 100 μ L Bradford Reagent: 1 vial (2ml)
Category:	Polyclonal Antibody
Synonyms:	PLSCR3
Clone:	-
Applications:	WB IF/ICC ELISA
Conjugation:	Unconjugated
Reactivity:	Human, Mouse, Rat

Antibody Data

Gene ID:	57048
Uniprot:	AB_2759215
Host Species:	Rabbit
Purification:	Affinity purification
Observed MW:	32kDa
Calculated MW:	32kDa

Preparation & Storage

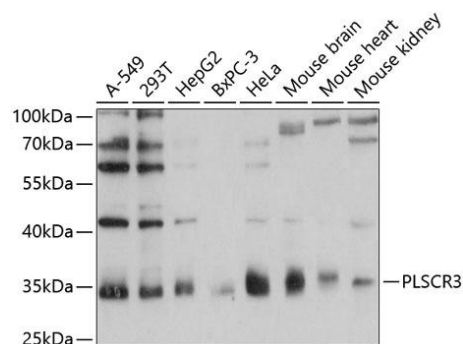
Storage: Store at -20°C. Avoid freeze / thaw cycles. Buffer: PBS with 0.01% thimerosal, 50% glycerol, pH 7.3.
Store Bradford Reagent at Room Temperature for 1 Year.

Positive Sample: A-549, 293T, HepG2, BxPC-3, HeLa, Mouse brain, Mouse heart, Mouse kidney

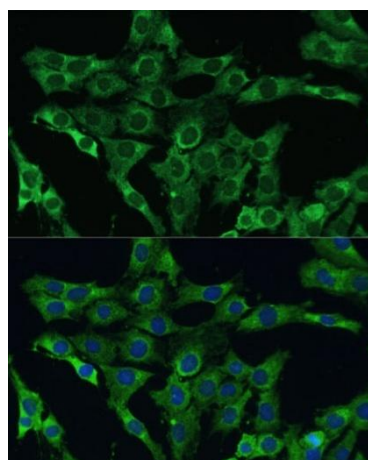
Recommended Dilutions:	WB	1:500 - 1:2000
	IF/ICC	1:50 - 1:100
	ELISA	Recommended starting concentration is 1 µg/mL. Please optimize the concentration based on your specific assay requirements.

Protein Quantification (Optional): To quantify total protein levels, use the Bradford Reagent included in this kit. Visit <https://www.assaygenie.com/bradford-protein-assay-protocol/> to view the full protocol

Validation Data



Western blot analysis of various lysates using PLSCR3 Rabbit pAb (CAB12371) at 1:1000 dilution. Secondary antibody: HRP-conjugated Goat anti-Rabbit IgG (H+L) (CABS014) at 1:10000 dilution. Lysates/proteins: 25µg per lane. Blocking buffer: 3% nonfat dry milk in TBST. Detection: ECL Basic Kit (AbGn00020). Exposure time: 1s.



Immunofluorescence analysis of cells using PLSCR3 Rabbit pAb (CAB12371) at dilution of 1:100 (40x lens). Secondary antibody: Cy3-conjugated Goat anti-Rabbit IgG (H+L) (CABS007) at 1:500 dilution. Blue: DAPI for nuclear staining.