

MRGPRX1 Antibody

CAB13142

Description

This MRGPRX1 Antibody is supplied as a kit for advanced applications. The kit includes Bradford Reagent to quantify total protein concentration for accurate sample normalization (Optional).

Product Information

| | |
|----------------------|---|
| SKU: | CAB13142 |
| Contents: | 20 µL, 100 µL Bradford Reagent: 1 vial (2ml) |
| Category: | Polyclonal Antibody |
| Synonyms: | GPCR, MGRG2, MRGX1, SNSR4, MRGPRX1 |
| Clone: | - |
| Applications: | WB ELISA |
| Conjugation: | Unconjugated |
| Reactivity: | Mouse, Rat |

Antibody Data

| | |
|-----------------------|-----------------------|
| Gene ID: | 259249 |
| Uniprot: | AB_2759992 |
| Host Species: | Rabbit |
| Purification: | Affinity purification |
| Observed MW: | 36kDa |
| Calculated MW: | 36kDa |

Preparation & Storage

Storage: Store at -20°C. Avoid freeze / thaw cycles. Buffer: PBS with 0.01% thimerosal, 50% glycerol, pH 7.3.

Store Bradford Reagent at Room Temperature for 1 Year.

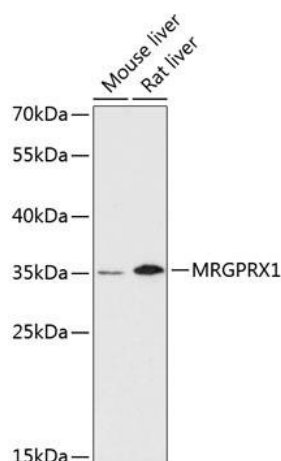
Positive Sample: Mouse liver, Rat liver

Recommended Dilutions:

| | |
|--------------|---|
| WB | 1:500 - 1:2000 |
| ELISA | Recommended starting concentration is 1 µg/mL. Please optimize the concentration based on your specific assay requirements. |

Protein Quantification (Optional): To quantify total protein levels, use the Bradford Reagent included in this kit. Visit <https://www.assaygenie.com/bradford-protein-assay-protocol/> to view the full protocol

Validation Data



Western blot analysis of various lysates using MRGPRX1 Rabbit pAb (CAB13142) at 1:3000 dilution. Secondary antibody: HRP-conjugated Goat anti-Rabbit IgG (H+L) (CABS014) at 1:10000 dilution. Lysates/proteins: 25 µg per lane. Blocking buffer: 3% nonfat dry milk in TBST. Detection: ECL Basic Kit (AbGn00020). Exposure time: 90s.