

## PER2 Antibody

CAB13168

### Description

---

This PER2 Antibody is supplied as a kit for advanced applications. The kit includes Bradford Reagent to quantify total protein concentration for accurate sample normalization (Optional).

### Product Information

---

|                      |   |
|----------------------|---|
| <b>SKU:</b>          | CAB13168  |
| <b>Contents:</b>     | 20 µL, 100 µL<br>Bradford Reagent: 1 vial (2ml)                         |
| <b>Category:</b>     | Polyclonal Antibody   |
| <b>Synonyms:</b>     | FASPS, FASPS1, PER2   |
| <b>Clone:</b>        | -   |
| <b>Applications:</b> | <span>WB</span> <span>IHC-P</span> <span>ChIP</span> <span>ELISA</span> |
| <b>Conjugation:</b>  | Unconjugated  |
| <b>Reactivity:</b>   | Human, Mouse, Rat   |

### Antibody Data

---

|                       |                       |
|-----------------------|-----------------------|
| <b>Gene ID:</b>       | 8864                  |
| <b>Uniprot:</b>       | AB_2760019            |
| <b>Host Species:</b>  | Rabbit                |
| <b>Purification:</b>  | Affinity purification |
| <b>Observed MW:</b>   | 136kDa                |
| <b>Calculated MW:</b> | 137kDa                |

## Preparation & Storage

**Storage:** Store at -20°C. Avoid freeze / thaw cycles. Buffer: PBS containing 50% glycerol, preserved with proclin300 or sodium azide (as specified on the Certificate of Analysis), pH 7.3

Store Bradford Reagent at Room Temperature for 1 Year.

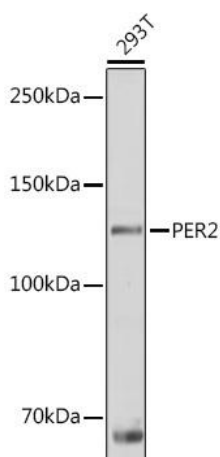
**Positive Sample:** 293T, Mouse liver

**Recommended Dilutions:**

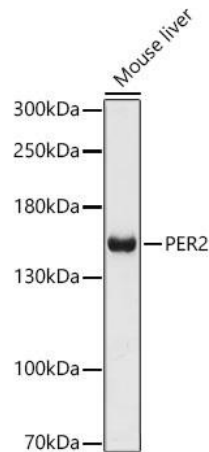
|              |  |
|--------------|--|
| <b>WB</b>    | 1:500 - 1:1000   |
| <b>IHC-P</b> | 1:50 - 1:200   |
| <b>ELISA</b> | Recommended starting concentration is 1 µg/mL. Please optimize the concentration based on your specific assay requirements. ChIP 5µg antibody for 10µg-15µg of Chromatin |

**Protein Quantification (Optional):** To quantify total protein levels, use the Bradford Reagent included in this kit. Visit <https://www.assaygenie.com/bradford-protein-assay-protocol/> to view the full protocol

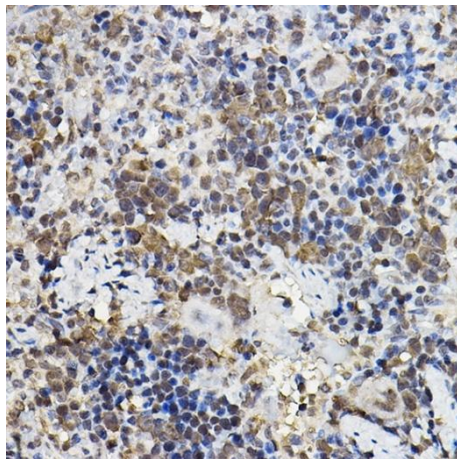
## Validation Data



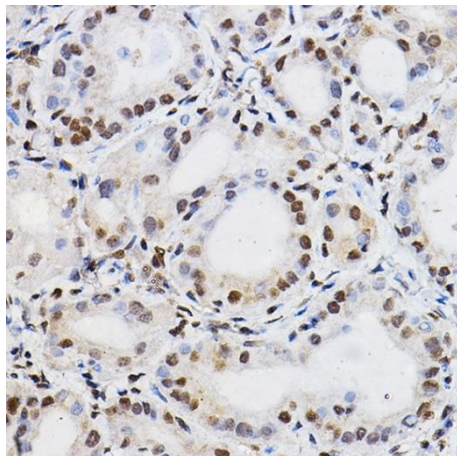
Western blot analysis of lysates from 293T cells, using Rabbit pAb (CAB13168) at 1:1000 dilution. Secondary antibody: HRP-conjugated Goat anti-Rabbit IgG (H+L) (CABS014) at 1:10000 dilution. Lysates/proteins: 25µg per lane. Blocking buffer: 3% nonfat dry milk in TBST. Detection: ECL Basic Kit (AbGn00020). Exposure time: 10s.



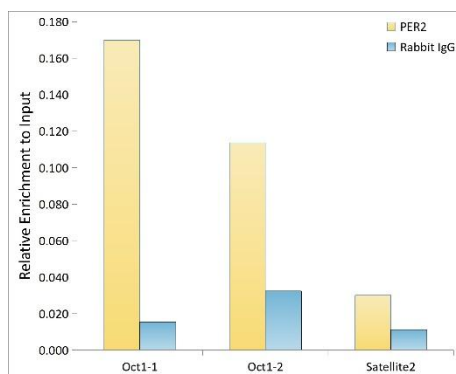
Western blot analysis of lysates from Mouse liver, using Rabbit pAb (CAB13168) at 1:1000 dilution. Secondary antibody: HRP-conjugated Goat anti-Rabbit IgG (H+L) (CABS014) at 1:10000 dilution. Lysates/proteins: 25µg per lane. Blocking buffer: 3% nonfat dry milk in TBST. Detection: ECL Basic Kit (AbGn00020). Exposure time: 90s.



Immunohistochemistry analysis of paraffin-embedded Rat spleen using Rabbit pAb (CAB13168) at dilution of 1:100 (40x lens). High pressure antigen retrieval performed with 0.01M Citrate buffer (pH 6.0) prior to IHC staining.



Immunohistochemistry analysis of paraffin-embedded Human thyroid cancer using Rabbit pAb (CAB13168) at dilution of 1:100 (40x lens). High pressure antigen retrieval performed with 0.01M Citrate buffer (pH 6.0) prior to IHC staining.



Chromatin immunoprecipitation analysis of extracts of cells, using antibody (CAB13168) and rabbit IgG. The amount of immunoprecipitated DNA was checked by quantitative PCR. Histogram was constructed by the ratios of the immunoprecipitated DNA to the input.