

## POLR2H Antibody

CAB13339

### Description

---

This POLR2H Antibody is supplied as a kit for advanced applications. The kit includes Bradford Reagent to quantify total protein concentration for accurate sample normalization (Optional).

### Product Information

---

<b>SKU:</b>	CAB13339
<b>Contents:</b>	20 µL, 100 µL Bradford Reagent: 1 vial (2ml)
<b>Category:</b>	Polyclonal Antibody
<b>Synonyms:</b>	RPB8, RPB17, RPABC3, POLR2H
<b>Clone:</b>	-
<b>Applications:</b>	<span>WB</span> <span>IP</span> <span>ELISA</span>
<b>Conjugation:</b>	Unconjugated
<b>Reactivity:</b>	Human, Mouse

### Antibody Data

---

<b>Gene ID:</b>	5437
<b>Uniprot:</b>	AB_2760195
<b>Host Species:</b>	Rabbit
<b>Purification:</b>	Affinity purification
<b>Observed MW:</b>	17kDa
<b>Calculated MW:</b>	17kDa

## Preparation & Storage

**Storage:** Store at -20°C. Avoid freeze / thaw cycles. Buffer: PBS containing 50% glycerol, preserved with proclin300 or sodium azide (as specified on the Certificate of Analysis), pH 7.3.

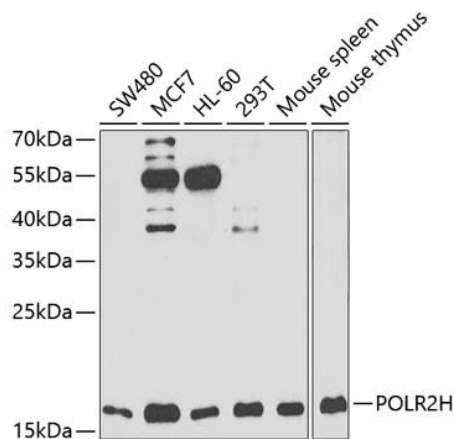
Store Bradford Reagent at Room Temperature for 1 Year.

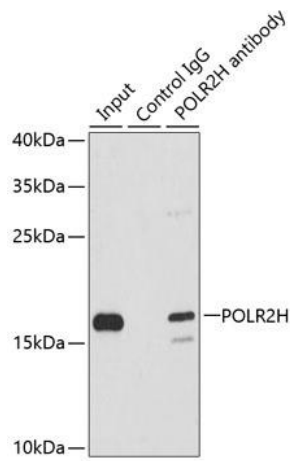
**Positive Sample:** SW480, MCF7, HL-60, 293T, Mouse spleen, Mouse thymus

<b>Recommended Dilutions:</b>	<b>WB</b>	1:500 - 1:2000
	<b>IP</b>	0.5µg-4µg antibody for 200µg-400µg extracts of whole cells
	<b>ELISA</b>	Recommended starting concentration is 1 µg/mL. Please optimize the concentration based on your specific assay requirements.

**Protein Quantification (Optional):** To quantify total protein levels, use the Bradford Reagent included in this kit. Visit <https://www.assaygenie.com/bradford-protein-assay-protocol/> to view the full protocol

## Validation Data





Immunoprecipitation analysis of 200  $\mu$ g extracts of cells using 1  $\mu$ g POLR2H antibody (CAB13339). Western blot was performed from the immunoprecipitate using POLR2H antibody (CAB13339) at a dilution of 1:1000.