

PARP12 Antibody

CAB14317

Description

This PARP12 Antibody is supplied as a kit for advanced applications. The kit includes Bradford Reagent to quantify total protein concentration for accurate sample normalization (Optional).

Product Information

SKU:	CAB14317
Contents:	20 µL, 100 µL Bradford Reagent: 1 vial (2ml)
Category:	Polyclonal Antibody
Synonyms:	ZC3H1, ARTD12, MST109, MSTP109, ZC3HDC1, PARP12
Clone:	-
Applications:	WB ELISA
Conjugation:	Unconjugated
Reactivity:	Human, Mouse, Rat

Antibody Data

Gene ID:	64761
Uniprot:	AB_2761181
Host Species:	Rabbit
Purification:	Affinity purification
Observed MW:	79kDa
Calculated MW:	79kDa

Preparation & Storage

Storage: Store at -20°C. Avoid freeze / thaw cycles. Buffer: PBS with 0.01% thimerosal, 50% glycerol, pH 7.3.

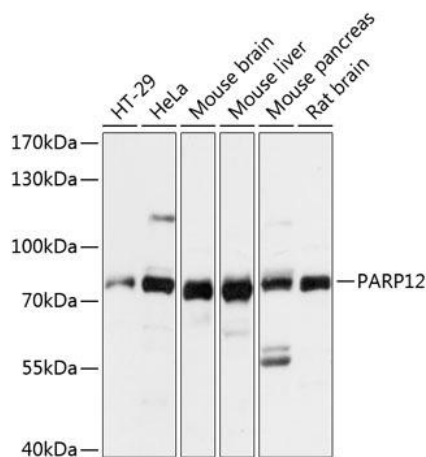
Store Bradford Reagent at Room Temperature for 1 Year.

Positive Sample: HT-29, HeLa, Mouse brain, Mouse liver, Mouse pancreas, Rat brain

Recommended Dilutions:	WB	1:500 - 1:2000
	ELISA	Recommended starting concentration is 1 µg/mL. Please optimize the concentration based on your specific assay requirements.

Protein Quantification (Optional): To quantify total protein levels, use the Bradford Reagent included in this kit. Visit <https://www.assaygenie.com/bradford-protein-assay-protocol/> to view the full protocol

Validation Data



Western blot analysis of various lysates using PARP12 Rabbit pAb (CAB14317) at 1:3000 dilution. Secondary antibody: HRP-conjugated Goat anti-Rabbit IgG (H+L) (CABS014) at 1:10000 dilution. Lysates/proteins: 25µg per lane. Blocking buffer: 3% nonfat dry milk in TBST. Detection: ECL Basic Kit (AbGn00020). Exposure time: 10s.