

[KO Validated] Glutathione Synthetase (GSS) Antibody

CAB14535

Description

This [KO Validated] Glutathione Synthetase (GSS) Antibody is supplied as a kit for advanced applications. The kit includes Bradford Reagent to quantify total protein concentration for accurate sample normalization (Optional).

Product Information

SKU:	CAB14535
Contents:	20 µL, 100 µL Bradford Reagent: 1 vial (2ml)
Category:	Polyclonal Antibody
Synonyms:	GSHS, HEL-S-64p, HEL-S-88n, S)
Clone:	-
Applications:	WB IF/ICC ELISA
Conjugation:	Unconjugated
Reactivity:	Human, Mouse, Rat

Antibody Data

Gene ID:	2937
Uniprot:	AB_2861700
Host Species:	Rabbit
Purification:	Affinity purification
Observed MW:	52kDa
Calculated MW:	52kDa

Preparation & Storage

Storage: Store at -20°C. Avoid freeze / thaw cycles. Buffer: PBS with 0.01% thimerosal, 50% glycerol, pH 7.3.

Store Bradford Reagent at Room Temperature for 1 Year.

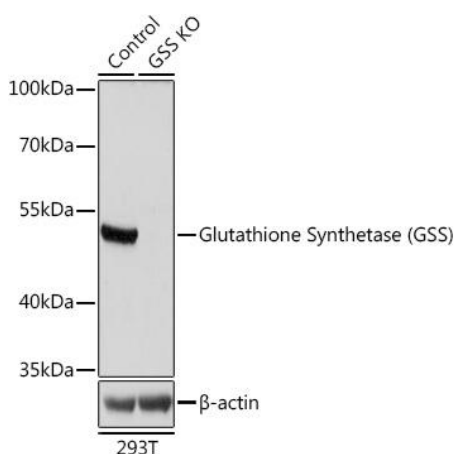
Positive Sample: 293T, SH-SY5Y, Mouse liver, Mouse kidney, Rat lung

Recommended Dilutions:

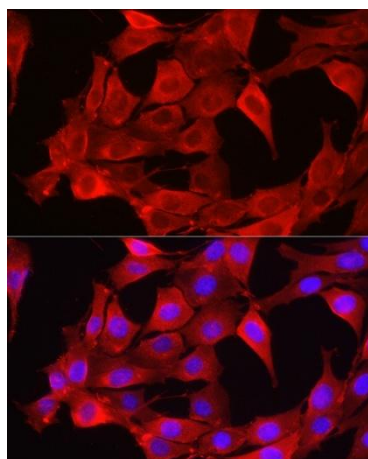
WB	1:500 - 1:2000
IF/ICC	1:50 - 1:200
ELISA	Recommended starting concentration is 1 µg/mL. Please optimize the concentration based on your specific assay requirements.

Protein Quantification (Optional): To quantify total protein levels, use the Bradford Reagent included in this kit. Visit <https://www.assaygenie.com/bradford-protein-assay-protocol/> to view the full protocol

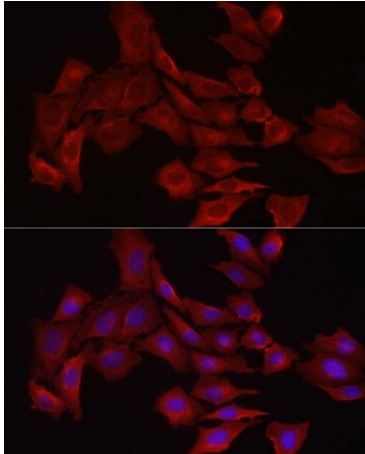
Validation Data



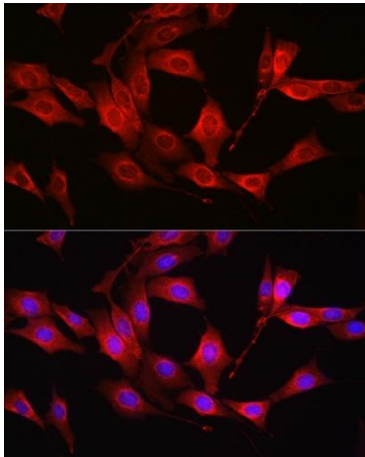
Western blot analysis of lysates from wild type (WT) and Glutathione Synthetase (Glutathione Synthetase (GSS)) knockout (KO) 293T cells, using [KO Validated] Glutathione Synthetase (GSS) Rabbit pAb (CAB14535) at 1:1000 dilution. Secondary antibody: HRP-conjugated Goat anti-Rabbit IgG (H+L) (CABS014) at 1:10000 dilution. Lysates/proteins: 25µg per lane. Blocking buffer: 3% nonfat dry milk in TBST. Detection: ECL Basic Kit (AbGn00020). Exposure time: 5s.



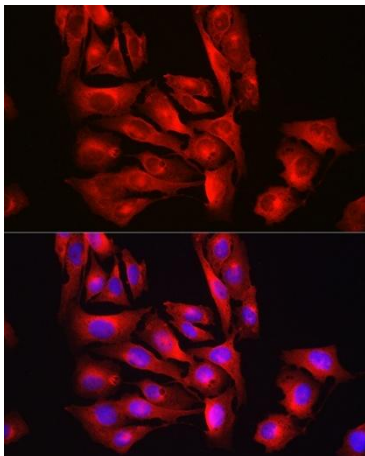
Immunofluorescence analysis of NIH/3T3 cells using Glutathione Synthetase (GSS) Rabbit pAb (CAB14535) at dilution of 1:100 (40x lens). Secondary antibody: Cy3-conjugated Goat anti-Rabbit IgG (H+L) (CABS007) at 1:500 dilution. Blue: DAPI for nuclear staining.



Immunofluorescence analysis of U2OS cells using Glutathione Synthetase (GSS) Rabbit pAb (CAB14535) at dilution of 1:100 (40x lens). Secondary antibody: Cy3-conjugated Goat anti-Rabbit IgG (H+L) (CABS007) at 1:500 dilution. Blue: DAPI for nuclear staining.



Immunofluorescence analysis of NIH/3T3 cells using [KO Validated] Glutathione Synthetase (GSS) Rabbit pAb (CAB14535) at dilution of 1:100 (40x lens). Secondary antibody: Cy3-conjugated Goat anti-Rabbit IgG (H+L) (CABS007) at 1:500 dilution. Blue: DAPI for nuclear staining.



Immunofluorescence analysis of U2OS cells using [KO Validated] Glutathione Synthetase (GSS) Rabbit pAb (CAB14535) at dilution of 1:100 (40x lens). Secondary antibody: Cy3-conjugated Goat anti-Rabbit IgG (H+L) (CABS007) at 1:500 dilution. Blue: DAPI for nuclear staining.