

## PDP1 Antibody

CAB14545

### Description

---

This PDP1 Antibody is supplied as a kit for advanced applications. The kit includes Bradford Reagent to quantify total protein concentration for accurate sample normalization (Optional).

### Product Information

---

|                      |   |
|----------------------|---|
| <b>SKU:</b>          | CAB14545  |
| <b>Contents:</b>     | 20 $\mu$ L, 100 $\mu$ L<br>Bradford Reagent: 1 vial (2ml) |
| <b>Category:</b>     | Polyclonal Antibody                                       |
| <b>Synonyms:</b>     | PDH, PDP, PDPC, PPM2A, PPM2C, PDP1                        |
| <b>Clone:</b>        | -   |
| <b>Applications:</b> | <span>WB</span> <span>IF/ICC</span> <span>ELISA</span>    |
| <b>Conjugation:</b>  | Unconjugated  |
| <b>Reactivity:</b>   | Human, Mouse, Rat   |

### Antibody Data

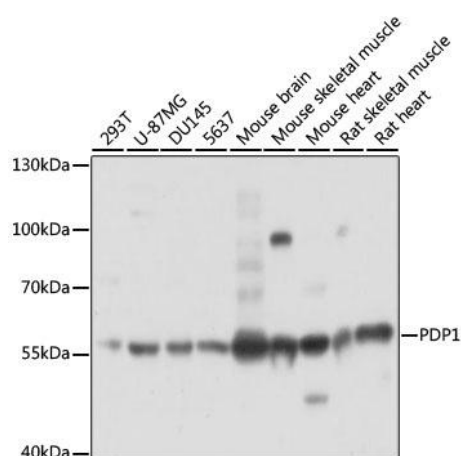
---

|                       |                       |
|-----------------------|-----------------------|
| <b>Gene ID:</b>       | 54704                 |
| <b>Uniprot:</b>       | AB_2761421            |
| <b>Host Species:</b>  | Rabbit                |
| <b>Purification:</b>  | Affinity purification |
| <b>Observed MW:</b>   | 61kDa                 |
| <b>Calculated MW:</b> | 61kDa                 |

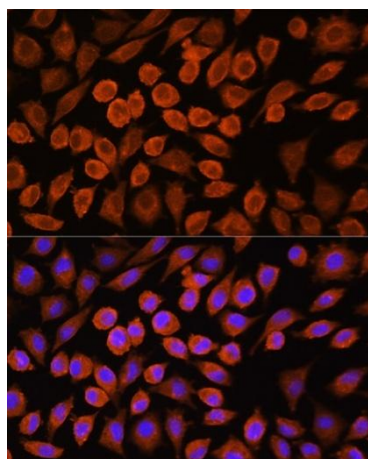
## Preparation & Storage

|   |  |   |
|---|--|---|
| <b>Storage:</b>                           | Store at -20°C. Avoid freeze / thaw cycles. Buffer: PBS with 0.01% thimerosal, 50% glycerol, pH 7.3.<br>Store Bradford Reagent at Room Temperature for 1 Year.   |   |
| <b>Positive Sample:</b>                   | 293T, U-87MG, DU145, 5637, mouse brain, mouse skeletal muscle, mouse heart, rat skeletal muscle, rat heart   |   |
| <b>Recommended Dilutions:</b>             | <b>WB</b>  | 1:500 - 1:2000  |
|   | <b>IF/ICC</b>  | 1:50 - 1:200  |
|   | <b>ELISA</b>   | Recommended starting concentration is 1 µg/mL. Please optimize the concentration based on your specific assay requirements. |
| <b>Protein Quantification (Optional):</b> | To quantify total protein levels, use the Bradford Reagent included in this kit. Visit <a href="https://www.assaygenie.com/bradford-protein-assay-protocol/">https://www.assaygenie.com/bradford-protein-assay-protocol/</a> to view the full protocol |   |

## Validation Data



Western blot analysis of various lysates using Rabbit pAb (CAB14545) at 1:3000 dilution. Secondary antibody: HRP-conjugated Goat anti-Rabbit IgG (H+L) (CABS014) at 1:10000 dilution. Lysates/proteins: 25 µg per lane. Blocking buffer: 3% nonfat dry milk in TBST. Detection: ECL Basic Kit (AbGn00020). Exposure time: 1 s.



Immunofluorescence analysis of cells using Rabbit pAb (CAB14545) at dilution of 1:100. Secondary antibody: Cy3-conjugated Goat anti-Rabbit IgG (H+L) (CABS007) at 1:500 dilution. Blue: DAPI for nuclear staining.

