

HTRA2 Antibody

CAB14877

Description

This HTRA2 Antibody is supplied as a kit for advanced applications. The kit includes Bradford Reagent to quantify total protein concentration for accurate sample normalization (Optional).

Product Information

SKU:	CAB14877
Contents:	20 µL, 100 µL Bradford Reagent: 1 vial (2ml)
Category:	Polyclonal Antibody
Synonyms:	OMI, MGCA8, PARK13, PRSS25, HTRA2
Clone:	-
Applications:	WB IHC-P IP ELISA
Conjugation:	Unconjugated
Reactivity:	Human, Mouse, Rat

Antibody Data

Gene ID:	27429
Uniprot:	AB_2761757
Host Species:	Rabbit
Purification:	Affinity purification
Observed MW:	36kDa
Calculated MW:	49kDa

Preparation & Storage

Storage: Store at -20°C. Avoid freeze / thaw cycles. Buffer: PBS containing 50% glycerol, preserved with proclin300 or sodium azide (as specified on the Certificate of Analysis), pH 7.3.

Store Bradford Reagent at Room Temperature for 1 Year.

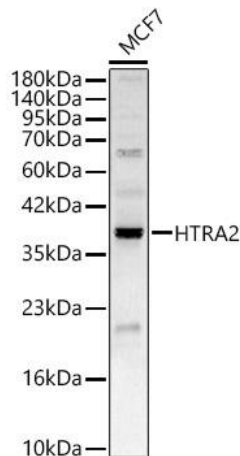
Positive Sample: MCF7

Recommended Dilutions:

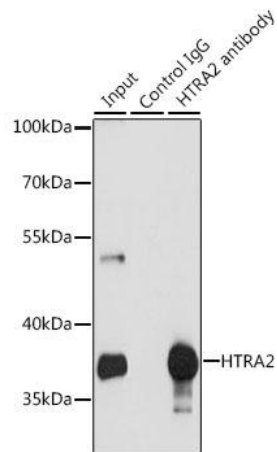
WB	1:500 - 1:2000
IHC-P	1:50 - 1:200
IP	0.5µg-4µg antibody for 200µg-400µg extracts of whole cells
ELISA	Recommended starting concentration is 1 µg/mL. Please optimize the concentration based on your specific assay requirements.

Protein Quantification (Optional): To quantify total protein levels, use the Bradford Reagent included in this kit. Visit <https://www.assaygenie.com/bradford-protein-assay-protocol/> to view the full protocol

Validation Data



Western blot analysis of lysates from cells, using HTRA2 Rabbit pAb (CAB14877) at 1:2000 dilution. Secondary antibody: HRP-conjugated Goat anti-Rabbit IgG (H+L) (CABS014) at 1:10000 dilution. Lysates/proteins: 25µg per lane. Blocking buffer: 3% nonfat dry milk in TBST. Detection: ECL Basic Kit (AbGn00020). Exposure time: 60s.



Immunoprecipitation analysis of 200 µg extracts of MCF-7 cells, using 3 µg HTRA2 antibody (CAB14877). Western blot was performed from the immunoprecipitate using HTRA2 antibody (CAB14877) at a dilution of 1:1000.