

PPIL1 Antibody

CAB14892

Description

This PPIL1 Antibody is supplied as a kit for advanced applications. The kit includes Bradford Reagent to quantify total protein concentration for accurate sample normalization (Optional).

Product Information

SKU:	CAB14892
Contents:	20 μ L, 100 μ L Bradford Reagent: 1 vial (2ml)
Category:	Polyclonal Antibody
Synonyms:	CYPL1, PCH14, hCyPX, PPIase, CGI-124, PPIL1
Clone:	-
Applications:	WB ELISA
Conjugation:	Unconjugated
Reactivity:	Human, Mouse, Rat

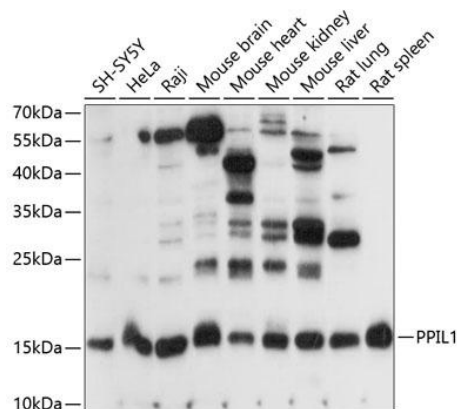
Antibody Data

Gene ID:	51645
Uniprot:	AB_2761773
Host Species:	Rabbit
Purification:	Affinity purification
Observed MW:	18kDa
Calculated MW:	18kDa

Preparation & Storage

Storage:	Store at -20°C. Avoid freeze / thaw cycles. Buffer: PBS with 0.01% thimerosal, 50% glycerol, pH 7.3. Store Bradford Reagent at Room Temperature for 1 Year.	
Positive Sample:	SH-SY5Y, HeLa, Raji, Mouse brain, Mouse heart, Mouse kidney, Mouse liver, Rat lung, Rat spleen	
Recommended Dilutions:	WB	1:500 - 1:2000
	ELISA	Recommended starting concentration is 1 µg/mL. Please optimize the concentration based on your specific assay requirements.
Protein Quantification (Optional):	To quantify total protein levels, use the Bradford Reagent included in this kit. Visit https://www.assaygenie.com/bradford-protein-assay-protocol/ to view the full protocol	

Validation Data



Western blot analysis of various lysates using PPIL1 Rabbit pAb (CAB14892) at 1:1000 dilution. Secondary antibody: HRP-conjugated Goat anti-Rabbit IgG (H+L) (CABS014) at 1:10000 dilution. Lysates/proteins: 25µg per lane. Blocking buffer: 3% nonfat dry milk in TBST. Detection: ECL Basic Kit (AbGn00020). Exposure time: 30s.