

Guanylyl Cyclase beta 1 (GUCY1B3) Antibody

CAB15276

Description

This Guanylyl Cyclase beta 1 (GUCY1B3) Antibody is supplied as a kit for advanced applications. The kit includes Bradford Reagent to quantify total protein concentration for accurate sample normalization (Optional).

Product Information

SKU:	CAB15276
Contents:	20 μ L, 100 μ L Bradford Reagent: 1 vial (2ml)
Category:	Polyclonal Antibody
Synonyms:	GUCB3, GC-SB3, GUC1B3, GUCSB3, GUCY1B3, GC-S-beta-1, Guanylyl Cyclase beta 1 (GUCY1B3)
Clone:	-
Applications:	WB ELISA
Conjugation:	Unconjugated
Reactivity:	Human, Mouse, Rat

Antibody Data

Gene ID:	2983
Uniprot:	AB_2762176
Host Species:	Rabbit
Purification:	Affinity purification
Observed MW:	70kDa
Calculated MW:	71kDa

Preparation & Storage

Storage: Store at -20°C. Avoid freeze / thaw cycles. Buffer: PBS with 0.01% thimerosal, 50% glycerol, pH 7.3.

Store Bradford Reagent at Room Temperature for 1 Year.

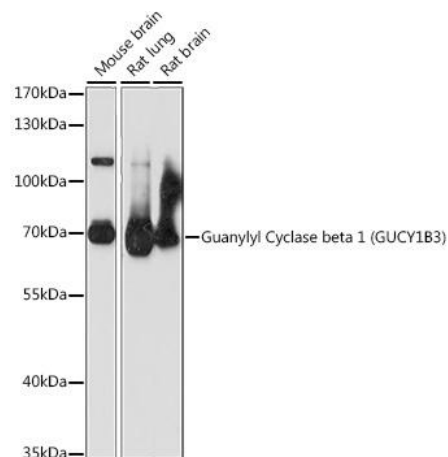
Positive Sample: Mouse brain, Rat lung, Rat brain

Recommended Dilutions:

WB	1:200 - 1:2000
ELISA	Recommended starting concentration is 1 µg/mL. Please optimize the concentration based on your specific assay requirements.

Protein Quantification (Optional): To quantify total protein levels, use the Bradford Reagent included in this kit. Visit <https://www.assaygenie.com/bradford-protein-assay-protocol/> to view the full protocol

Validation Data



Western blot analysis of various lysates using Guanylyl Cyclase beta 1 (GUCY1B3) Rabbit pAb (CAB15276) at 1:1000 dilution. Secondary antibody: HRP-conjugated Goat anti-Rabbit IgG (H+L) (CABS014) at 1:10000 dilution. Lysates/proteins: 25µg per lane. Blocking buffer: 3% nonfat dry milk in TBST. Detection: ECL Basic Kit (AbGn00020). Exposure time: 30S.