

## KIF5B Antibody

CAB15284

### Description

---

This KIF5B Antibody is supplied as a kit for advanced applications. The kit includes Bradford Reagent to quantify total protein concentration for accurate sample normalization (Optional).

### Product Information

---

<b>SKU:</b>	CAB15284
<b>Contents:</b>	20 µL, 100 µL Bradford Reagent: 1 vial (2ml)
<b>Category:</b>	Polyclonal Antibody
<b>Synonyms:</b>	KNS, KINH, KNS1, UKHC, HEL-S-61, KIF5B
<b>Clone:</b>	-
<b>Applications:</b>	WB IHC-P IF/ICC ELISA
<b>Conjugation:</b>	Unconjugated
<b>Reactivity:</b>	Human, Mouse, Rat

### Antibody Data

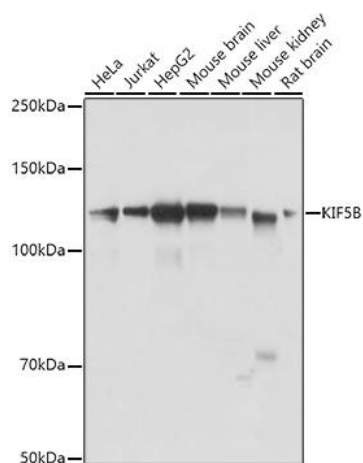
---

<b>Gene ID:</b>	3799
<b>Uniprot:</b>	AB_2762184
<b>Host Species:</b>	Rabbit
<b>Purification:</b>	Affinity purification
<b>Observed MW:</b>	110kDa
<b>Calculated MW:</b>	110kDa

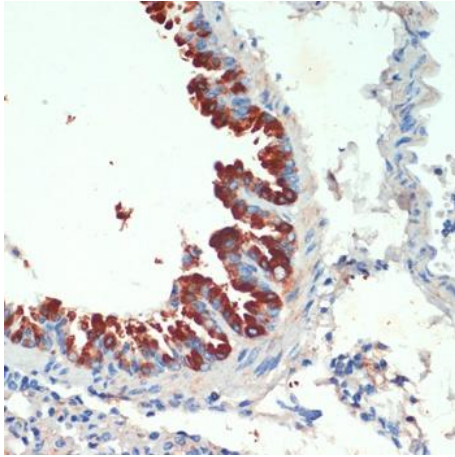
## Preparation & Storage

<b>Storage:</b>	Store at -20°C. Avoid freeze / thaw cycles. Buffer: PBS with 0.01% thimerosal, 50% glycerol, pH 7.3. Store Bradford Reagent at Room Temperature for 1 Year.	
<b>Positive Sample:</b>	HeLa, Jurkat, HepG2, Mouse brain, Mouse liver, Mouse kidney, Rat brain	
<b>Recommended Dilutions:</b>	<b>WB</b>	1:500 - 1:1000
	<b>IHC-P</b>	1:50 - 1:100
	<b>IF/ICC</b>	1:50 - 1:200
	<b>ELISA</b>	Recommended starting concentration is 1 µg/mL. Please optimize the concentration based on your specific assay requirements.
<b>Protein Quantification (Optional):</b>	To quantify total protein levels, use the Bradford Reagent included in this kit. Visit <a href="https://www.assaygenie.com/bradford-protein-assay-protocol/">https://www.assaygenie.com/bradford-protein-assay-protocol/</a> to view the full protocol	

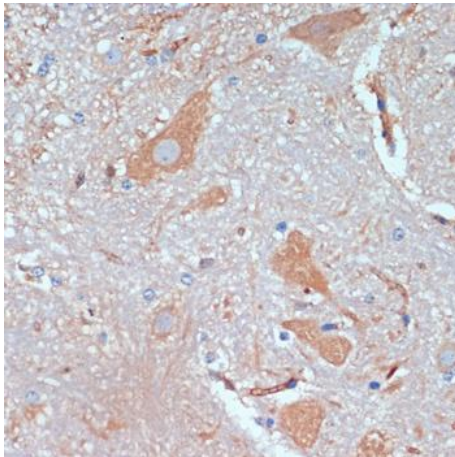
## Validation Data



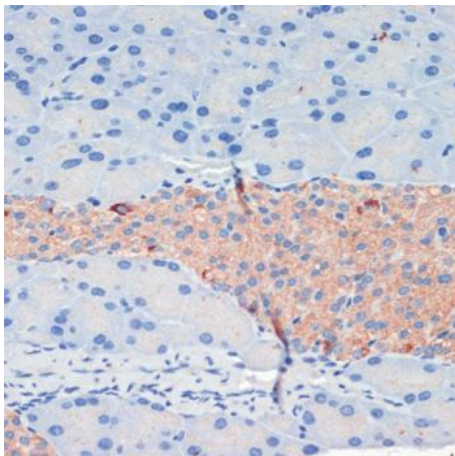
Western blot analysis of various lysates using KIF5B Rabbit pAb (CAB15284) at 1:1000 dilution. Secondary antibody: HRP-conjugated Goat anti-Rabbit IgG (H+L) (CABS014) at 1:10000 dilution. Lysates/proteins: 25µg per lane. Blocking buffer: 3% nonfat dry milk in TBST. Detection: ECL Basic Kit (AbGn00020). Exposure time: 1s.



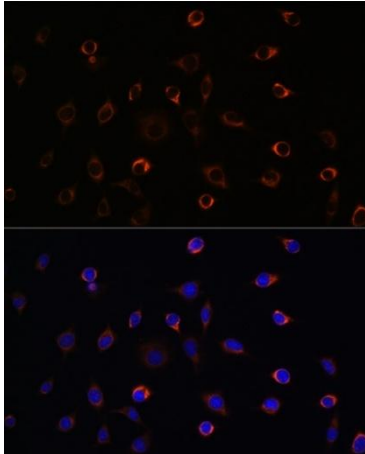
Immunohistochemistry analysis of paraffin-embedded Mouse lung using KIF5B Rabbit pAb (CAB15284) at dilution of 1:200 (40x lens). Microwave antigen retrieval performed with 0.01M PBS Buffer (pH 7.2) prior to IHC staining.



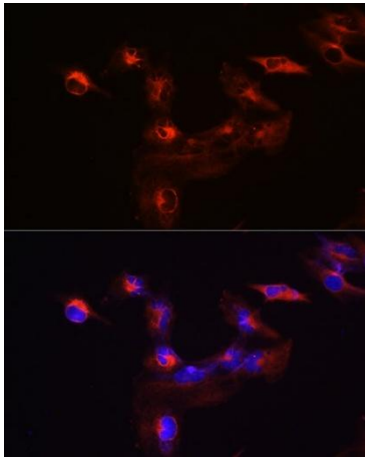
Immunohistochemistry analysis of paraffin-embedded Mouse spinal cord using KIF5B Rabbit pAb (CAB15284) at dilution of 1:200 (40x lens). Microwave antigen retrieval performed with 0.01M PBS Buffer (pH 7.2) prior to IHC staining.



Immunohistochemistry analysis of paraffin-embedded Mouse pancreas using KIF5B Rabbit pAb (CAB15284) at dilution of 1:200 (40x lens). Microwave antigen retrieval performed with 0.01M PBS Buffer (pH 7.2) prior to IHC staining.



Immunofluorescence analysis of cells using KIF5B Rabbit pAb (CAB15284) at dilution of 1:100 (40x lens). Secondary antibody: Cy3-conjugated Goat anti-Rabbit IgG (H+L) (CABS007) at 1:500 dilution. Blue: DAPI for nuclear staining.



Immunofluorescence analysis of U-251 MG cells using KIF5B Rabbit pAb (CAB15284) at dilution of 1:100 (40x lens). Secondary antibody: Cy3-conjugated Goat anti-Rabbit IgG (H+L) (CABS007) at 1:500 dilution. Blue: DAPI for nuclear staining.