

## ADAMTS1 Antibody

CAB15356

### Description

---

This ADAMTS1 Antibody is supplied as a kit for advanced applications. The kit includes Bradford Reagent to quantify total protein concentration for accurate sample normalization (Optional).

### Product Information

---

|                      |   |
|----------------------|---|
| <b>SKU:</b>          | CAB15356  |
| <b>Contents:</b>     | 20 $\mu$ L, 100 $\mu$ L<br>Bradford Reagent: 1 vial (2ml) |
| <b>Category:</b>     | Polyclonal Antibody                                       |
| <b>Synonyms:</b>     | C3-C5, METH1, ADAMTS1                                     |
| <b>Clone:</b>        | -   |
| <b>Applications:</b> | <span>WB</span> <span>IF/ICC</span> <span>ELISA</span>    |
| <b>Conjugation:</b>  | Unconjugated  |
| <b>Reactivity:</b>   | Human, Mouse, Rat   |

### Antibody Data

---

|                       |                       |
|-----------------------|-----------------------|
| <b>Gene ID:</b>       | 9510                  |
| <b>Uniprot:</b>       | AB_2762258            |
| <b>Host Species:</b>  | Rabbit                |
| <b>Purification:</b>  | Affinity purification |
| <b>Observed MW:</b>   | 105kDa                |
| <b>Calculated MW:</b> | 105kDa                |

## Preparation & Storage

**Storage:** Store at -20°C. Avoid freeze / thaw cycles. Buffer: PBS containing 50% glycerol, preserved with proclin300 or sodium azide (as specified on the Certificate of Analysis), pH 7.3.

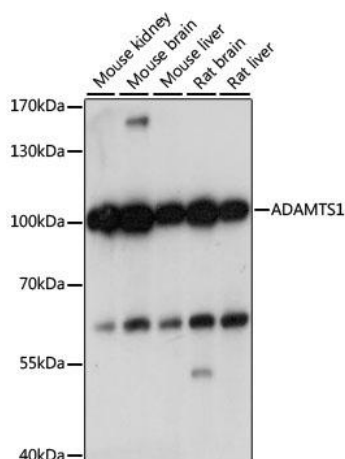
Store Bradford Reagent at Room Temperature for 1 Year.

**Positive Sample:** Mouse kidney, Mouse brain, Mouse liver, Rat brain, Rat liver

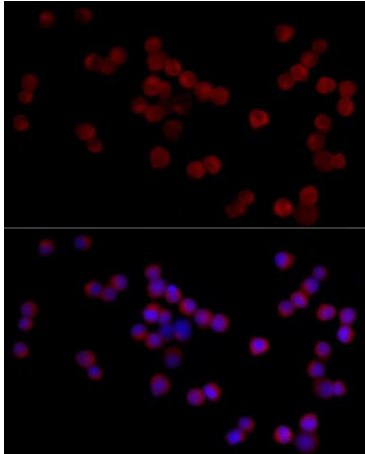
|                               |               |   |
|-------------------------------|---------------|---|
| <b>Recommended Dilutions:</b> | <b>WB</b>     | 1:500 - 1:2000  |
|                               | <b>IF/ICC</b> | 1:50 - 1:200  |
|                               | <b>ELISA</b>  | Recommended starting concentration is 1 µg/mL. Please optimize the concentration based on your specific assay requirements. |

**Protein Quantification (Optional):** To quantify total protein levels, use the Bradford Reagent included in this kit. Visit <https://www.assaygenie.com/bradford-protein-assay-protocol/> to view the full protocol

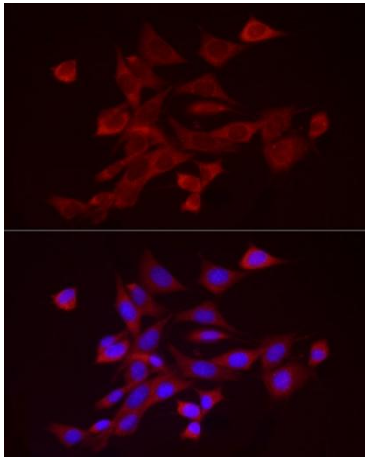
## Validation Data



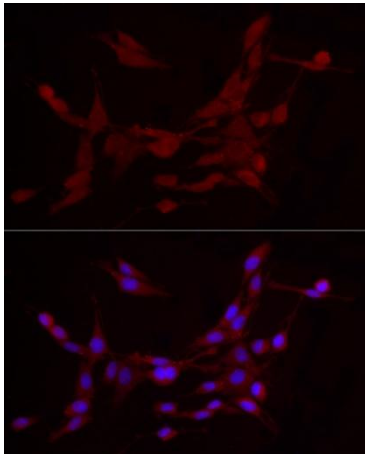
Western blot analysis of various lysates using ADAMTS1 Rabbit pAb (CAB15356) at 1:1000 dilution. Secondary antibody: HRP-conjugated Goat anti-Rabbit IgG (H+L) (CABS014) at 1:10000 dilution. Lysates/proteins: 25µg per lane. Blocking buffer: 3% nonfat dry milk in TBST. Detection: ECL Basic Kit (AbGn00020). Exposure time: 1s.



Immunofluorescence analysis of 293F cells using ADAMTS1 Rabbit pAb (CAB15356) at dilution of 1:20 (40x lens). Secondary antibody: Cy3-conjugated Goat anti-Rabbit IgG (H+L) (CABS007) at 1:500 dilution. Blue: DAPI for nuclear staining.



Immunofluorescence analysis of NIH/3T3 cells using ADAMTS1 Rabbit pAb (CAB15356) at dilution of 1:20 (40x lens). Secondary antibody: Cy3-conjugated Goat anti-Rabbit IgG (H+L) (CABS007) at 1:500 dilution. Blue: DAPI for nuclear staining.



Immunofluorescence analysis of PC-12 cells using ADAMTS1 Rabbit pAb (CAB15356) at dilution of 1:20 (40x lens). Secondary antibody: Cy3-conjugated Goat anti-Rabbit IgG (H+L) (CABS007) at 1:500 dilution. Blue: DAPI for nuclear staining.