

## UPB1 Antibody

CAB15452

### Description

---

This UPB1 Antibody is supplied as a kit for advanced applications. The kit includes Bradford Reagent to quantify total protein concentration for accurate sample normalization (Optional).

### Product Information

---

<b>SKU:</b>	CAB15452
<b>Contents:</b>	20 $\mu$ L, 100 $\mu$ L Bradford Reagent: 1 vial (2ml)
<b>Category:</b>	Polyclonal Antibody
<b>Synonyms:</b>	BUP1, UPB1
<b>Clone:</b>	-
<b>Applications:</b>	<span style="background-color: #f08080; padding: 2px;">WB</span> <span style="background-color: #add8e6; padding: 2px;">ELISA</span>
<b>Conjugation:</b>	Unconjugated
<b>Reactivity:</b>	Mouse, Rat

### Antibody Data

---

<b>Gene ID:</b>	51733
<b>Uniprot:</b>	AB_2762360
<b>Host Species:</b>	Rabbit
<b>Purification:</b>	Affinity purification
<b>Observed MW:</b>	43kDa
<b>Calculated MW:</b>	43kDa

## Preparation & Storage

**Storage:** Store at -20°C. Avoid freeze / thaw cycles. Buffer: PBS with 0.01% thimerosal, 50% glycerol, pH 7.3.

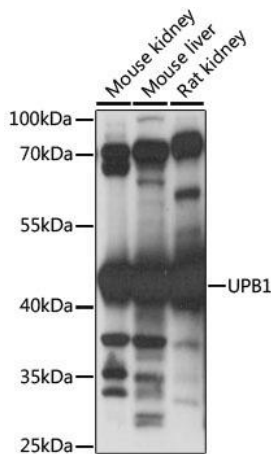
Store Bradford Reagent at Room Temperature for 1 Year.

**Positive Sample:** Mouse kidney, Mouse liver, Rat kidney

<b>Recommended Dilutions:</b>	<b>WB</b>	1:200 - 1:2000
	<b>ELISA</b>	Recommended starting concentration is 1 µg/mL. Please optimize the concentration based on your specific assay requirements.

**Protein Quantification (Optional):** To quantify total protein levels, use the Bradford Reagent included in this kit. Visit <https://www.assaygenie.com/bradford-protein-assay-protocol/> to view the full protocol

## Validation Data



Western blot analysis of various lysates using Rabbit pAb (CAB15452) at 1:1000 dilution. Secondary antibody: HRP-conjugated Goat anti-Rabbit IgG (H+L) (CABS014) at 1:10000 dilution. Lysates/proteins: 25µg per lane. Blocking buffer: 3% nonfat dry milk in TBST. Detection: ECL Basic Kit (AbGn00020). Exposure time: 30s.