

THRB Antibody

CAB1582

Description

This THRB Antibody is supplied as a kit for advanced applications. The kit includes Bradford Reagent to quantify total protein concentration for accurate sample normalization (Optional).

Product Information

SKU:	CAB1582
Contents:	20 µL, 100 µL Bradford Reagent: 1 vial (2ml)
Category:	Polyclonal Antibody
Synonyms:	TRb, GRTH, PRTH, THR1, ERBA2, NR1A2, THRB1, THRB2, TRbeta, THRbeta, TRbeta1, C-ERBA-2, THRbeta1, Thrbeta2, C-ERBA-BETA, TRβ1/THRB
Clone:	-
Applications:	WB ELISA
Conjugation:	Unconjugated
Reactivity:	Human, Mouse, Rat

Antibody Data

Gene ID:	7068
Uniprot:	AB_2763243
Host Species:	Rabbit
Purification:	Affinity purification
Observed MW:	53kDa
Calculated MW:	53kDa

Preparation & Storage

Storage: Store at -20°C. Avoid freeze / thaw cycles. Buffer: PBS containing 50% glycerol, preserved with proclin300 or sodium azide (as specified on the Certificate of Analysis), pH 7.3.

Store Bradford Reagent at Room Temperature for 1 Year.

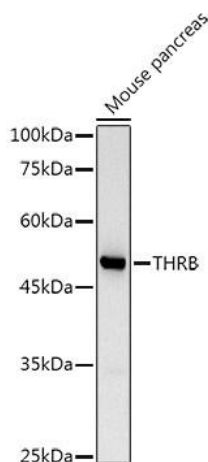
Positive Sample: Mouse pancreas

Recommended Dilutions:

WB	1:2000 - 1:5000
ELISA	Recommended starting concentration is 1 µg/mL. Please optimize the concentration based on your specific assay requirements.

Protein Quantification (Optional): To quantify total protein levels, use the Bradford Reagent included in this kit. Visit <https://www.assaygenie.com/bradford-protein-assay-protocol/> to view the full protocol

Validation Data



Western blot analysis of lysates from Mouse pancreas, using TRβ1/THRB Rabbit pAb (CAB1582) at 1:1000 dilution. Secondary antibody: HRP-conjugated Goat anti-Rabbit IgG (H+L) (CABS014) at 1:10000 dilution. Lysates/proteins: 25µg per lane. Blocking buffer: 3% nonfat dry milk in TBST. Detection: ECL Basic Kit (AbGn00020). Exposure time: 30s.