

RPS27L Antibody

CAB15833

Description

This RPS27L Antibody is supplied as a kit for advanced applications. The kit includes Bradford Reagent to quantify total protein concentration for accurate sample normalization (Optional).

Product Information

SKU:	CAB15833
Contents:	20 μ L, 100 μ L Bradford Reagent: 1 vial (2ml)
Category:	Polyclonal Antibody
Synonyms:	RPS27L
Clone:	-
Applications:	WB ELISA
Conjugation:	Unconjugated
Reactivity:	Human, Mouse, Rat

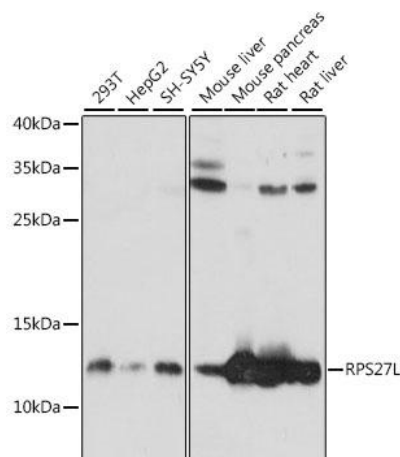
Antibody Data

Gene ID:	51065
Uniprot:	AB_2763258
Host Species:	Rabbit
Purification:	Affinity purification
Observed MW:	12kDa
Calculated MW:	9kDa

Preparation & Storage

Storage:	Store at -20°C. Avoid freeze / thaw cycles. Buffer: PBS with 0.01% thimerosal, 50% glycerol, pH 7.3. Store Bradford Reagent at Room Temperature for 1 Year.	
Positive Sample:	293T, HepG2, SH-SY5Y, Mouse liver, Mouse pancreas, Rat heart, Rat liver	
Recommended Dilutions:	WB	1:500 - 1:2000
	ELISA	Recommended starting concentration is 1 µg/mL. Please optimize the concentration based on your specific assay requirements.
Protein Quantification (Optional):	To quantify total protein levels, use the Bradford Reagent included in this kit. Visit https://www.assaygenie.com/bradford-protein-assay-protocol/ to view the full protocol	

Validation Data



Western blot analysis of various lysates using RPS27L Rabbit pAb (CAB15833) at 1:1000 dilution. Secondary antibody: HRP-conjugated Goat anti-Rabbit IgG (H+L) (CABS014) at 1:10000 dilution. Lysates/proteins: 25µg per lane. Blocking buffer: 3% nonfat dry milk in TBST. Detection: ECL Basic Kit (AbGn00020). Exposure time: 2s.