

## NINJ1 Antibody

CAB16406

### Description

---

This NINJ1 Antibody is supplied as a kit for advanced applications. The kit includes Bradford Reagent to quantify total protein concentration for accurate sample normalization (Optional).

### Product Information

---

|                      |   |
|----------------------|---|
| <b>SKU:</b>          | CAB16406  |
| <b>Contents:</b>     | 20 $\mu$ L, 100 $\mu$ L<br>Bradford Reagent: 1 vial (2ml) |
| <b>Category:</b>     | Polyclonal Antibody                                       |
| <b>Synonyms:</b>     | NIN1, NINJURIN, NINJ1                                     |
| <b>Clone:</b>        | -   |
| <b>Applications:</b> | <span>WB</span> <span>ELISA</span>                        |
| <b>Conjugation:</b>  | Unconjugated  |
| <b>Reactivity:</b>   | Human, Mouse, Rat   |

### Antibody Data

---

|                       |                       |
|-----------------------|-----------------------|
| <b>Gene ID:</b>       | 4814                  |
| <b>Uniprot:</b>       | AB_2770588            |
| <b>Host Species:</b>  | Rabbit                |
| <b>Purification:</b>  | Affinity purification |
| <b>Observed MW:</b>   | 18kDa                 |
| <b>Calculated MW:</b> | 16kDa                 |

## Preparation & Storage

**Storage:** Store at -20°C. Avoid freeze / thaw cycles. Buffer: PBS with 0.09% Sodium azide, 50% glycerol, pH 7.3.

Store Bradford Reagent at Room Temperature for 1 Year.

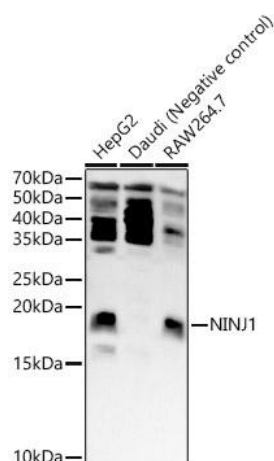
**Positive Sample:** HepG2, Daudi, RAW264.7

**Recommended Dilutions:**

|              |   |
|--------------|---|
| <b>WB</b>    | 1:100 - 1:500   |
| <b>ELISA</b> | Recommended starting concentration is 1 µg/mL. Please optimize the concentration based on your specific assay requirements. |

**Protein Quantification (Optional):** To quantify total protein levels, use the Bradford Reagent included in this kit. Visit <https://www.assaygenie.com/bradford-protein-assay-protocol/> to view the full protocol

## Validation Data



Western blot analysis of various lysates, using NINJ1 Rabbit pAb (CAB16406) at 1:400 dilution. Secondary antibody: HRP-conjugated Goat anti-Rabbit IgG (H+L) (CABS014) at 1:10000 dilution. Lysates/proteins: 25µg per lane. Blocking buffer: 3% nonfat dry milk in TBST. Detection: ECL Basic Kit (AbGn00020). Exposure time: 60s.