

CFL1 Antibody

CAB1704

Description

This CFL1 Antibody is supplied as a kit for advanced applications. The kit includes Bradford Reagent to quantify total protein concentration for accurate sample normalization (Optional).

Product Information

SKU:	CAB1704
Contents:	20 μ L, 100 μ L Bradford Reagent: 1 vial (2ml)
Category:	Polyclonal Antibody
Synonyms:	CFL, cofilin, HEL-S-15, CFL1
Clone:	-
Applications:	WB ELISA
Conjugation:	Unconjugated
Reactivity:	Human, Mouse, Rat

Antibody Data

Gene ID:	1072
Uniprot:	AB_2763756
Host Species:	Rabbit
Purification:	Affinity purification
Observed MW:	19kDa
Calculated MW:	19kDa

Preparation & Storage

Storage: Store at -20°C. Avoid freeze / thaw cycles. Buffer: PBS with 0.09% Sodium azide, 50% glycerol, pH 7.3.

Store Bradford Reagent at Room Temperature for 1 Year.

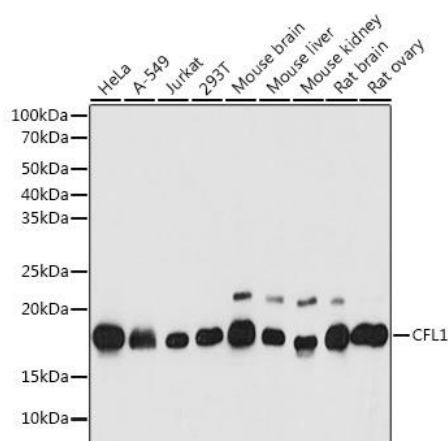
Positive Sample: HeLa, A-549, Jurkat, 293T, Mouse brain, Mouse liver, Mouse kidney, Rat brain, Rat ovary

Recommended Dilutions:

WB	1:500 - 1:1000
ELISA	Recommended starting concentration is 1 µg/mL. Please optimize the concentration based on your specific assay requirements.

Protein Quantification (Optional): To quantify total protein levels, use the Bradford Reagent included in this kit. Visit <https://www.assaygenie.com/bradford-protein-assay-protocol/> to view the full protocol

Validation Data



Western blot analysis of various lysates using Rabbit pAb (CAB1704) at 1:1000 dilution. Secondary antibody: HRP-conjugated Goat anti-Rabbit IgG (H+L) (CABS014) at 1:10000 dilution. Lysates/proteins: 25µg per lane. Blocking buffer: 3% nonfat dry milk in TBST. Detection: ECL Basic Kit (AbGn00020). Exposure time: 3s.