

## [KO Validated] betaIII-Tubulin Antibody

CAB17074

### Description

---

This [KO Validated] betaIII-Tubulin Antibody is supplied as a kit for advanced applications. The kit includes Bradford Reagent to quantify total protein concentration for accurate sample normalization (Optional).

### Product Information

---

|                      |  |
|----------------------|--|
| <b>SKU:</b>          | CAB17074   |
| <b>Contents:</b>     | 20 µL, 100 µL<br>Bradford Reagent: 1 vial (2ml)          |
| <b>Category:</b>     | Polyclonal Antibody                                      |
| <b>Synonyms:</b>     | CDCBM, FEOM3, TUBB4, CDCBM1, CFEOM3, beta-4, CFEOM3A, in |
| <b>Clone:</b>        | -  |
| <b>Applications:</b> | <span>WB</span> <span>ELISA</span> <span>IF-P</span>     |
| <b>Conjugation:</b>  | -  |
| <b>Reactivity:</b>   | Human, Mouse, Rat  |

### Antibody Data

---

|                       |                       |
|-----------------------|-----------------------|
| <b>Gene ID:</b>       | 10381                 |
| <b>Uniprot:</b>       | AB_2772760            |
| <b>Host Species:</b>  | Rabbit                |
| <b>Purification:</b>  | Affinity purification |
| <b>Observed MW:</b>   | 55kDa                 |
| <b>Calculated MW:</b> | 50kDa                 |

## Preparation & Storage

**Storage:** Store at -20°C. Avoid freeze / thaw cycles. Buffer: PBS containing 50% glycerol, preserved with proclin300 or sodium azide (as specified on the Certificate of Analysis), pH 7.3.

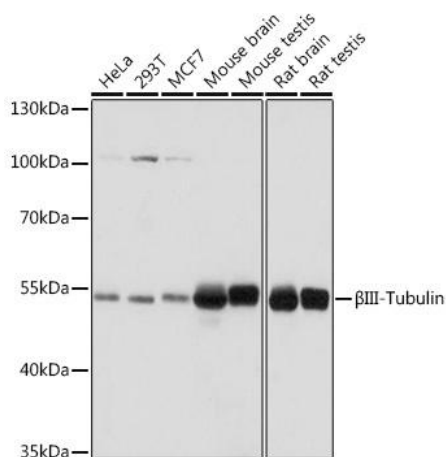
Store Bradford Reagent at Room Temperature for 1 Year.

**Positive Sample:** HeLa, 293T, MCF7, mouse brain, mouse testis, rat brain, rat testis

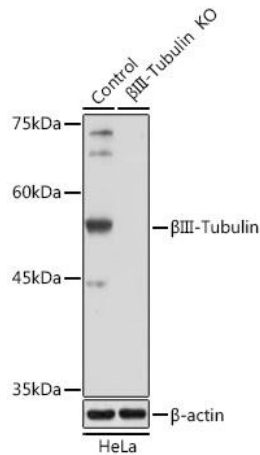
|                               |              |   |
|-------------------------------|--------------|---|
| <b>Recommended Dilutions:</b> | <b>WB</b>    | 1:500 - 1:2000  |
|                               | <b>IF-P</b>  | 1:50 - 1:200  |
|                               | <b>ELISA</b> | Recommended starting concentration is 1 µg/mL. Please optimize the concentration based on your specific assay requirements. |

**Protein Quantification (Optional):** To quantify total protein levels, use the Bradford Reagent included in this kit. Visit <https://www.assaygenie.com/bradford-protein-assay-protocol/> to view the full protocol

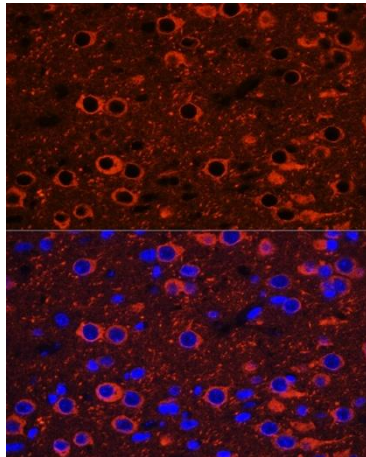
## Validation Data



Western blot analysis of various lysates using [KO Validated] βIII-Tubulin Rabbit pAb (CAB17074) at 1:1000 dilution. Secondary antibody: HRP-conjugated Goat anti-Rabbit IgG (H+L) (CABS014) at 1:10000 dilution. Lysates/proteins: 25µg per lane. Blocking buffer: 3% nonfat dry milk in TBST. Detection: ECL Basic Kit (AbGn00020). Exposure time: 1s.



Western blot analysis of lysates from wild type (WT) and  $\beta$ III-Tubulin/ $\beta$ 3-Tubulin knockout (KO) HeLa cells, using [KO Validated]  $\beta$ III-Tubulin Rabbit pAb (CAB17074) at 1:1000 dilution. Secondary antibody: HRP-conjugated Goat anti-Rabbit IgG (H+L) (CABS014) at 1:10000 dilution. Lysates/proteins: 25 $\mu$ g per lane. Blocking buffer: 3% nonfat dry milk in TBST. Detection: ECL Basic Kit (AbGn00020). Exposure time: 1s.



Immunofluorescence analysis of paraffin-embedded Rat brain using [KO Validated]  $\beta$ III-Tubulin Rabbit pAb (CAB17074) at dilution of 1:100 (40x lens). Secondary antibody: Cy3-conjugated Goat anti-Rabbit IgG (H+L) (CABS007) at 1:500 dilution. Blue: DAPI for nuclear staining.